

## Product datasheet for **AM06757PU-N**

### **PDX1 Mouse Monoclonal Antibody [Clone ID: 2g12]**

#### **Product data:**

Product Type:	Primary Antibodies
Clone Name:	2g12
Applications:	ELISA, FC, WB
Recommended Dilution:	<b>ELISA:</b> 1/10000. <b>Western Blot:</b> 1/500 - 1/2000. <b>Flow Cytometry:</b> 1/200 - 1/400.
Reactivity:	Human
Host:	Mouse
Isotype:	IgG1
Clonality:	Monoclonal
Immunogen:	Purified recombinant fragment of Human PDX1 expressed in E. Coli.
Specificity:	Recognizes Insulin promoter factor 1 (PDX1)
Formulation:	PBS State: Purified State: Liquid purified antibody Stabilizer: 0.5% protein stabilizer Preservative: 0.05% Sodium Azide
Concentration:	lot specific
Conjugation:	Unconjugated
Storage:	Store the antibody undiluted at 2-8°C for one month or (in aliquots) at -20°C for longer. Avoid repeated freezing and thawing.
Stability:	Shelf life: one year from despatch.
Predicted Protein Size:	30.8 kDa
Gene Name:	pancreatic and duodenal homeobox 1
Database Link:	<a href="#">Entrez Gene 3651 Human P52945</a>



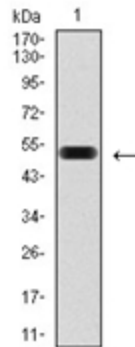
[View online »](#)

**Background:**

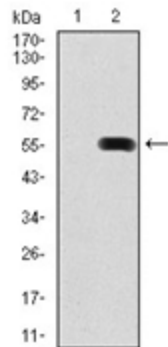
The protein encoded by this gene is a transcriptional activator of several genes, including insulin, somatostatin, glucokinase, islet amyloid polypeptide, and glucose transporter type 2. The encoded nuclear protein is involved in the early development of the pancreas and plays a major role in glucose-dependent regulation of insulin gene expression. Defects in this gene are a cause of pancreatic agenesis, which can lead to early-onset insulin-dependent diabetes mellitus (NIDDM), as well as maturity onset diabetes of the young type 4 (MODY4).

**Synonyms:**

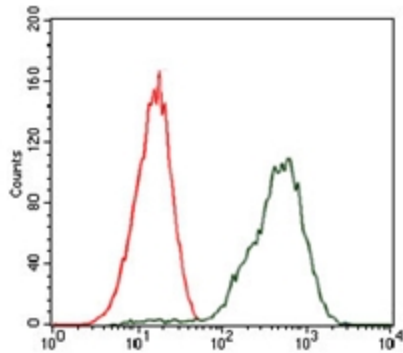
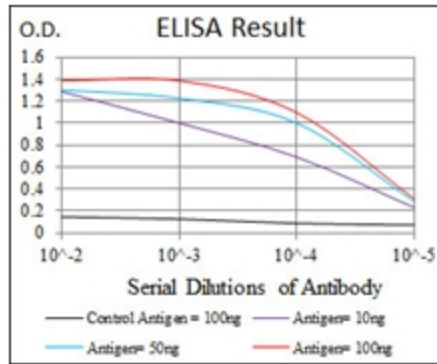
PDX1, PDX-1, IPF1, Pancreas/duodenum homeobox protein 1, Insulin promoter factor 1, IPF-1, Islet/duodenum homeobox-1, IDX-1, Somatostatin-transactivating factor 1, STF-1, Insulin upstream factor 1, IUF-1, Glucose-sensitive factor, GSF

**Product images:**

Western blot analysis using PDX1 antibody against Human PDX1 (AA: 39-283) recombinant protein (Expected MW is 52 kDa).



Western blot analysis using PDX1 antibody against HEK293 (1) and PDX1 (AA: 39-283)-hlgGfC transfected HEK293 (2) cell lysate.



Flow Cytometric analysis of Jurkat cells using PDX1 antibody (green) and negative control (red).