

## Product datasheet for **AM06756PU-N**

### HEXA Mouse Monoclonal Antibody [Clone ID: 3F10]

#### Product data:

Product Type:	Primary Antibodies
Clone Name:	3F10
Applications:	ELISA, FC, WB
Recommended Dilution:	<b>ELISA:</b> 1/10000. <b>Western Blot:</b> 1/500 - 1/2000. <b>Flow Cytometry:</b> 1/200 - 1/400.
Reactivity:	Human
Host:	Mouse
Isotype:	IgG2b
Clonality:	Monoclonal
Immunogen:	Purified recombinant fragment of Human HEXA expressed in E. Coli.
Specificity:	Recognizes Beta-hexosaminidase alpha / HEXA
Formulation:	PBS State: Purified State: Liquid purified antibody Stabilizer: 0.5% protein stabilizer Preservative: 0.05% Sodium Azide
Concentration:	lot specific
Conjugation:	Unconjugated
Storage:	Store the antibody undiluted at 2-8°C for one month or (in aliquots) at -20°C for longer. Avoid repeated freezing and thawing.
Stability:	Shelf life: one year from despatch.
Predicted Protein Size:	60.7 kDa
Gene Name:	hexosaminidase subunit alpha
Database Link:	<a href="#">Entrez Gene 3073 Human P06865</a>



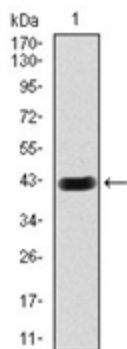
[View online »](#)

**Background:**

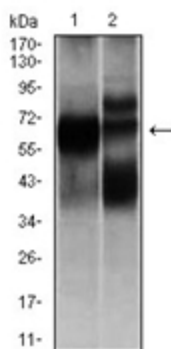
This gene encodes the alpha subunit of the lysosomal enzyme beta-hexosaminidase that, together with the cofactor GM2 activator protein, catalyzes the degradation of the ganglioside GM2, and other molecules containing terminal N-acetyl hexosamines. Beta-hexosaminidase is composed of two subunits, alpha and beta, which are encoded by separate genes. Both beta-hexosaminidase alpha and beta subunits are members of family 20 of glycosyl hydrolases. Mutations in the alpha or beta subunit genes lead to an accumulation of GM2 ganglioside in neurons and neurodegenerative disorders termed the GM2 gangliosidoses. Alpha subunit gene mutations lead to Tay-Sachs disease (GM2-gangliosidosis type I).

**Synonyms:**

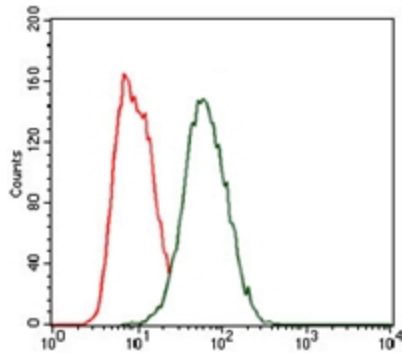
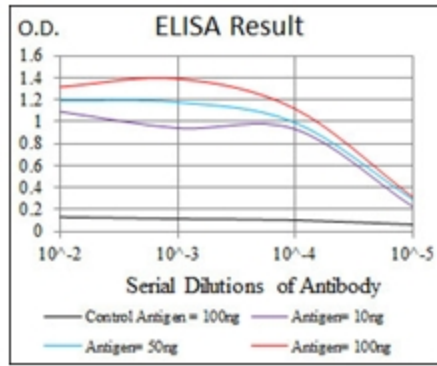
beta-N-acetylhexosaminidase; MGC99608; N-acetyl-beta-glucosaminidase; TSD

**Product images:**

Western blot analysis using HEXA antibody against human HEXA (AA: 29-181) recombinant protein (Expected MW is 43.1 kDa).



Western blot analysis using HEXA antibody against L1210 (1), and HL7702 (2) cell lysate.



Flow Cytometric analysis of HeLa cells using HEXA antibody (green) and negative control (red).