

## Product datasheet for **AM06753PU-N**

### Splunc2 Mouse Monoclonal Antibody [Clone ID: 1F12]

#### Product data:

Product Type:	Primary Antibodies
Clone Name:	1F12
Applications:	ELISA, FC, IF, IHC, WB
Recommended Dilution:	<b>ELISA:</b> 1/10000. <b>Western Blot:</b> 1/500 - 1/2000. <b>Flow Cytometry:</b> 1/200 - 1/400. <b>Immunofluorescence:</b> 1/200 - 1/1000. <b>Immunohistochemistry on Paraffin Sections:</b> 1/200 - 1/1000.
Reactivity:	Human, Mouse
Host:	Mouse
Isotype:	IgG1
Clonality:	Monoclonal
Immunogen:	Purified recombinant fragment of Mouse Splunc2 expressed in E. Coli.
Specificity:	Recognizes SPLUNC2
Formulation:	PBS State: Purified State: Liquid purified antibody Stabilizer: 0.5% protein stabilizer Preservative: 0.05% Sodium Azide
Concentration:	lot specific
Conjugation:	Unconjugated
Storage:	Store the antibody undiluted at 2-8°C for one month or (in aliquots) at -20°C for longer. Avoid repeated freezing and thawing.
Stability:	Shelf life: one year from despatch.

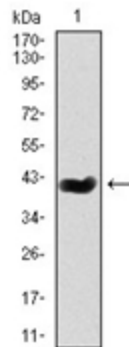


[View online »](#)

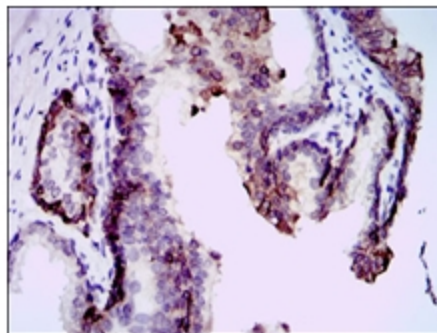
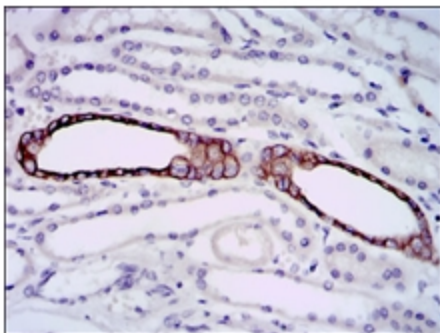
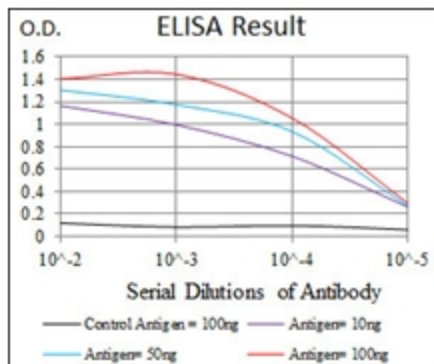
**Background:**

SPLUNC2 is one member of PLUNC family, the gene undergoes alternative splicing using two 5' non-coding exons, suggesting that the gene is regulated by alternative promoters. Multiple SPLUNC2 isoforms are found in the oral cavity and suggest that these proteins may be differentially regulated in distinct tissues where they may function in the innate immune response. Mucin plugs, mucous and intermediate cells of mucoepidermoid carcinomas were positive for LPLUNC1 and SPLUNC2, but areas composed of epidermoid and clear cells were negative for all PLUNCs. Papillary cystadenocarcinoma was positive for all PLUNCs.

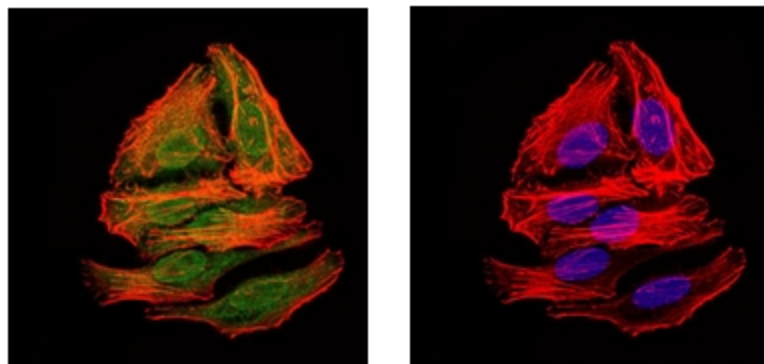
**Product images:**



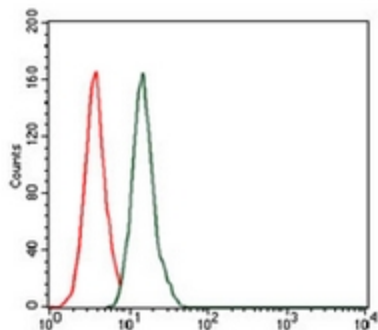
Western blot analysis using Splunc2 antibody Cat.-No AM06753PU-N against mouse Splunc2 (AA: 16-169) recombinant protein. (Expected MW is 41.6 kDa)



Immunohistochemical analysis of paraffin-embedded kidney (left) and prostate (right) tissues using Splunc2 antibody Cat.-No AM06753PU-N with DAB staining.



Left: Immunofluorescence analysis of HepG2 cells using Splunc2 antibody Cat.-No AM06753PU-N (green). Red: Actin filaments have been labeled with Alexa Fluor-555 phalloidin. Right: Immunofluorescence analysis of HepG2 cells. Blue: DRAQ5 fluorescent DNA dye.



Flow Cytometric analysis of HeLa cells using mouse Splunc2 antibody Cat.-No AM06753PU-N (green) and negative control (red).