

## Product datasheet for **AM06752PU-N**

### **HAS3 Mouse Monoclonal Antibody [Clone ID: 3C9]**

#### **Product data:**

Product Type:	Primary Antibodies
Clone Name:	3C9
Applications:	ELISA, FC, IHC, WB
Recommended Dilution:	<b>ELISA:</b> 1/10000. <b>Western Blot:</b> 1/500 - 1/2000. <b>Flow Cytometry:</b> 1/200 - 1/400. <b>Immunohistochemistry on Paraffin Sections:</b> 1/200 - 1/1000.
Reactivity:	Human
Host:	Mouse
Isotype:	IgG1
Clonality:	Monoclonal
Immunogen:	Purified recombinant fragment of Human HAS3 expressed in E. Coli.
Specificity:	Recognizes HAS3
Formulation:	PBS State: Purified State: Liquid purified antibody Stabilizer: 0.5% protein stabilizer Preservative: 0.05% Sodium Azide
Concentration:	lot specific
Conjugation:	Unconjugated
Storage:	Store the antibody undiluted at 2-8°C for one month or (in aliquots) at -20°C for longer. Avoid repeated freezing and thawing.
Stability:	Shelf life: one year from despatch.
Predicted Protein Size:	63 kDa
Gene Name:	hyaluronan synthase 3
Database Link:	<a href="#">Entrez Gene 3038 Human</a> <a href="#">O00219</a>



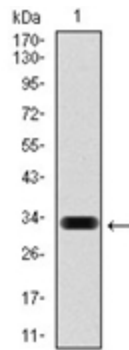
[View online »](#)

**Background:**

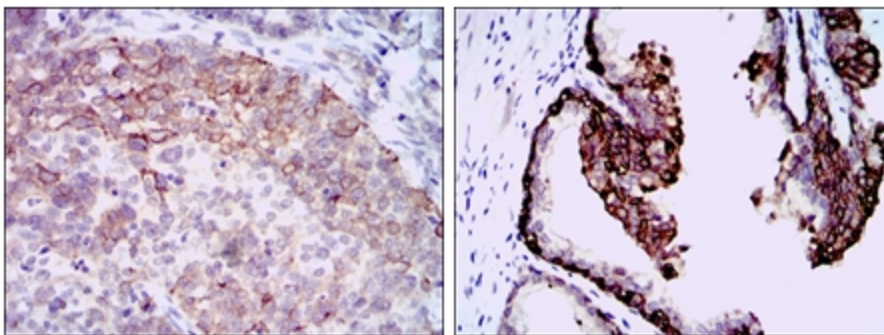
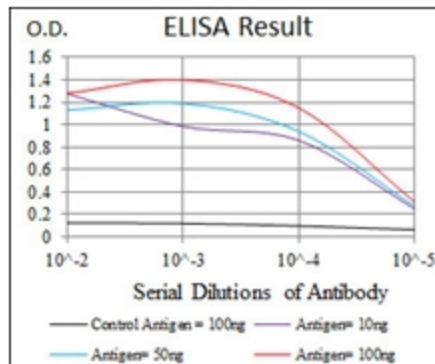
The protein encoded by this gene is involved in the synthesis of the unbranched glycosaminoglycan hyaluronan, or hyaluronic acid, which is a major constituent of the extracellular matrix. This gene is a member of the NODC/HAS gene family. Compared to the proteins encoded by other members of this gene family, this protein appears to be more of a regulator of hyaluronan synthesis. Alternative splicing results in multiple transcript variants.

**Synonyms:**

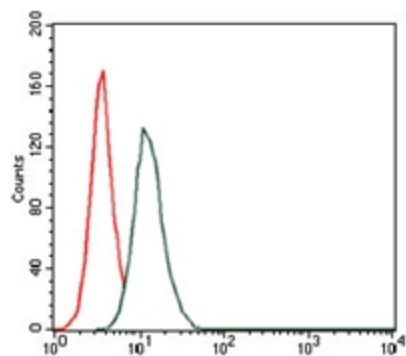
Hyaluronan synthase 3, Hyaluronate synthase 3

**Product images:**


Western blot analysis using HAS3 antibody against human HAS3 (AA: 312-364) recombinant protein (Expected MW is 32 kDa).



Immunohistochemical analysis of paraffin-embedded cervical cancer (Left) and prostate (Right) tissues using HAS3 antibody with DAB staining.



Flow cytometric analysis of HeLa cells using HAS3 antibody (green) and negative control (red).