

Product datasheet for **AM06751PU-N**

RAP1A Mouse Monoclonal Antibody [Clone ID: 5F8G2]

Product data:

Product Type:	Primary Antibodies
Clone Name:	5F8G2
Applications:	ELISA, FC, WB
Recommended Dilution:	ELISA: 1/10000. Western Blot: 1/500 - 1/2000. Flow Cytometry: 1/200 - 1/400.
Reactivity:	Human
Host:	Mouse
Isotype:	IgG1
Clonality:	Monoclonal
Immunogen:	Purified recombinant fragment of Human RAP1A expressed in E. Coli.
Specificity:	Recognizes RAP1A
Formulation:	PBS State: Purified State: Liquid purified antibody Stabilizer: 0.5% protein stabilizer Preservative: 0.05% Sodium Azide
Concentration:	lot specific
Conjugation:	Unconjugated
Storage:	Store the antibody undiluted at 2-8°C for one month or (in aliquots) at -20°C for longer. Avoid repeated freezing and thawing.
Stability:	Shelf life: one year from despatch.
Predicted Protein Size:	43.2 kDa
Gene Name:	RAP1A, member of RAS oncogene family
Database Link:	Entrez Gene 5906 Human P62834



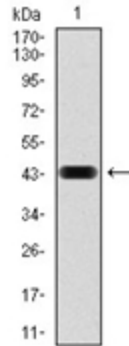
[View online »](#)

Background:

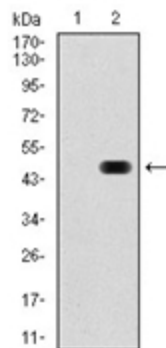
The product of this gene belongs to the family of RAS-related proteins. These proteins share approximately 50% amino acid identity with the classical RAS proteins and have numerous structural features in common. The most striking difference between RAP proteins and RAS proteins resides in their 61st amino acid: glutamine in RAS is replaced by threonine in RAP proteins. The product of this gene counteracts the mitogenic function of RAS because it can interact with RAS GAPs and RAF in a competitive manner. Two transcript variants encoding the same protein have been identified for this gene.

Synonyms:

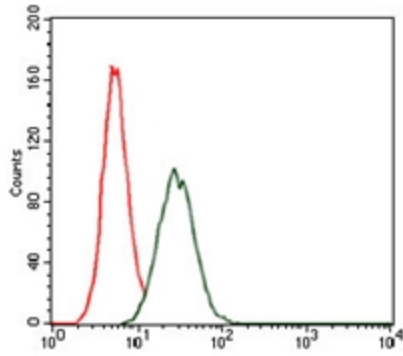
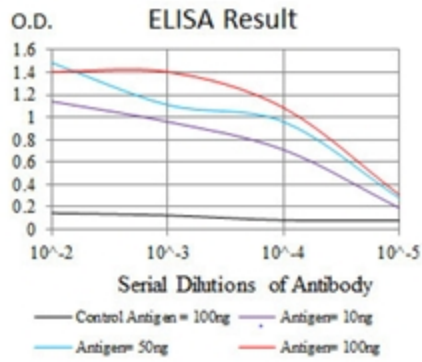
RAP-1A, C21KG, KREV1, KREV-1

Product images:

Western blot analysis using RAP1A antibody against Human RAP1A (AA: 28-180) recombinant protein (Expected MW is 21 kDa).



Western blot analysis using RAP1A antibody against HEK293 (1) and RAP1A (AA: 28-180)-hlgGfc transfected HEK293 (2) cell lysate.



Flow cytometric analysis of HeLa cells using RAP1A antibody (green) and negative control (red).