

Product datasheet for **AM06749PU-N**

MCP1 (CCL2) Mouse Monoclonal Antibody [Clone ID: 2D8]

Product data:

Product Type:	Primary Antibodies
Clone Name:	2D8
Applications:	ELISA, FC, IF, IHC, WB
Recommended Dilution:	ELISA: 1/10000. Western Blot: 1/500-1/2000. Immunofluorescence: 1/200-1/1000. Flow Cytometry: 1/200-1/400. Immunohistochemistry on Paraffin Sections: 1/200-1/1000.
Reactivity:	Human, Monkey, Mouse
Host:	Mouse
Isotype:	IgG1
Clonality:	Monoclonal
Immunogen:	Purified recombinant fragment of Human CCL2 expressed in <i>E.Coli</i> .
Specificity:	Recognizes CCL2
Formulation:	PBS State: Purified State: Liquid purified antibody Stabilizer: 0.5% protein stabilizer Preservative: 0.05% Sodium Azide
Concentration:	lot specific
Conjugation:	Unconjugated
Storage:	Store undiluted at 2-8°C for one month or (in aliquots) at -20°C for longer. Avoid repeated freezing and thawing.
Stability:	Shelf life: one year from despatch.
Predicted Protein Size:	11 kDa
Gene Name:	C-C motif chemokine ligand 2
Database Link:	Entrez Gene 6347 Human P13500



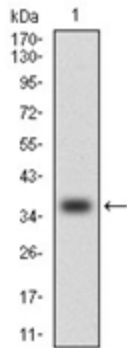
[View online »](#)

Background:

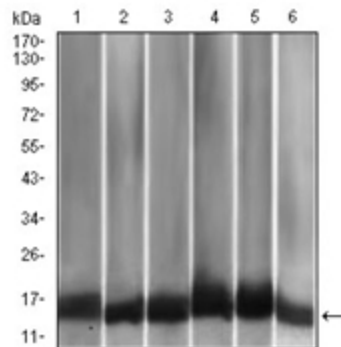
This gene is one of several cytokine genes clustered on the q-arm of chromosome 17. Cytokines are a family of secreted proteins involved in immunoregulatory and inflammatory processes. The protein encoded by this gene is structurally related to the CXC subfamily of cytokines. Members of this subfamily are characterized by two cysteines separated by a single amino acid. This cytokine displays chemotactic activity for monocytes and basophils but not for neutrophils or eosinophils. It has been implicated in the pathogenesis of diseases characterized by monocytic infiltrates, like psoriasis, rheumatoid arthritis and atherosclerosis. It binds to chemokine receptors CCR2 and CCR4.

Synonyms:

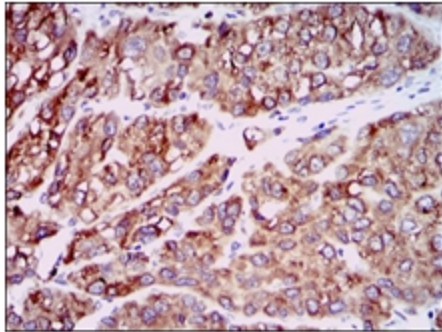
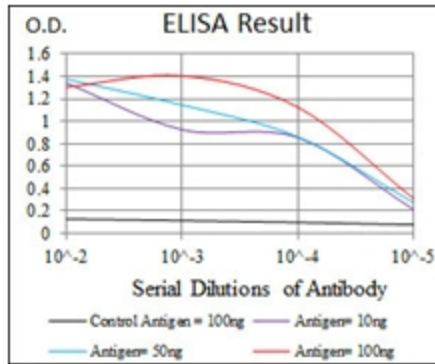
C-C motif chemokine 2, SCYA2, MCAF, Small-inducible cytokine A2, MCP-1, HC11, HC-11

Product images:


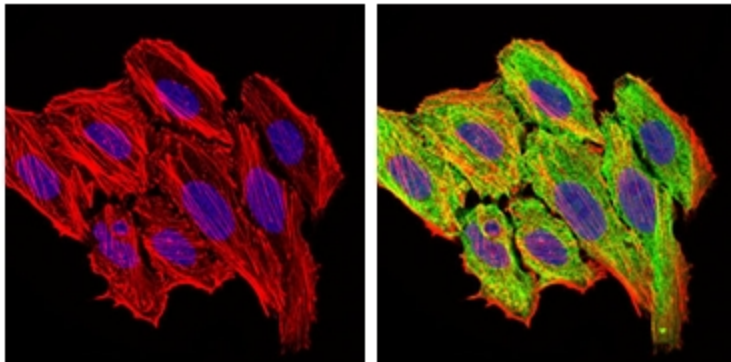
Western blot analysis using CCL2 antibody against human CCL2 (AA: 1-99) recombinant protein (Expected MW is 36.5 kDa).



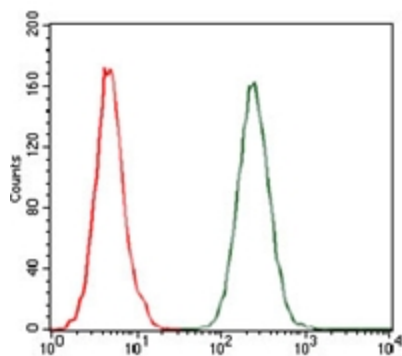
Western blot analysis using CCL2 antibody against A549 (1), HeLa (2), Raw264.7 (3), L1210 (4), C6 (5), and COS-7 (6) cell lysate.



Immunohistochemical analysis of paraffin-embedded liver cancer tissues using CCL2 antibody with DAB staining.



Left: Immunofluorescence analysis of HepG2 cells. Right: Immunofluorescence analysis of HepG2 cells using CCL2 antibody (green). Blue: DRAQ5 fluorescent DNA dye. Red: Actin filaments have been labeled with Alexa Fluor-555 phalloidin.



Flow cytometric analysis of A549 cells using CCL2 antibody (green) and negative control (red).