

Product datasheet for **AM06747PU-N**

Cytokeratin 5 (KRT5) Mouse Monoclonal Antibody [Clone ID: 2C2]

Product data:

Product Type:	Primary Antibodies
Clone Name:	2C2
Applications:	ELISA, FC, IF, IHC, WB
Recommended Dilution:	ELISA: 1/10000. Western Blot: 1/500 - 1/2000. Flow Cytometry: 1/200 - 1/400. Immunofluorescence: 1/200 - 1/1000. Immunohistochemistry on Paraffin Sections: 1/200 - 1/1000.
Reactivity:	Human, Monkey, Mouse
Host:	Mouse
Isotype:	IgG1
Clonality:	Monoclonal
Immunogen:	Purified recombinant fragment of Human CK5 expressed in E. Coli.
Specificity:	Recognizes Cytokeratin 5
Formulation:	PBS State: Purified State: Liquid purified antibody Stabilizer: 0.5% protein stabilizer Preservative: 0.05% Sodium Azide
Concentration:	lot specific
Conjugation:	Unconjugated
Storage:	Store the antibody undiluted at 2-8°C for one month or (in aliquots) at -20°C for longer. Avoid repeated freezing and thawing.
Stability:	Shelf life: one year from despatch.
Predicted Protein Size:	62.3 kDa
Gene Name:	keratin 5
Database Link:	Entrez Gene 3852 Human P13647



[View online »](#)

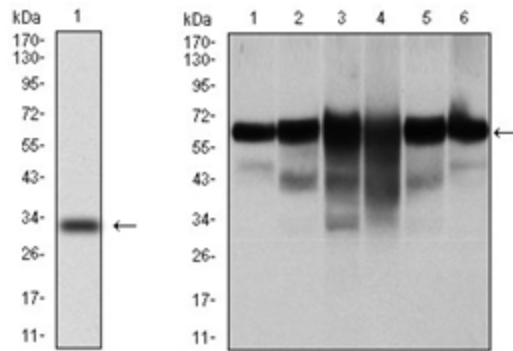
Background:

The protein encoded by this gene is a member of the keratin gene family. The type II cytokeratins consist of basic or neutral proteins which are arranged in pairs of heterotypic keratin chains coexpressed during differentiation of simple and stratified epithelial tissues. This type II cytokeratin is specifically expressed in the basal layer of the epidermis with family member KRT14. Mutations in these genes have been associated with a complex of diseases termed epidermolysis bullosa simplex. The type II cytokeratins are clustered in a region of chromosome 12q12-q13.

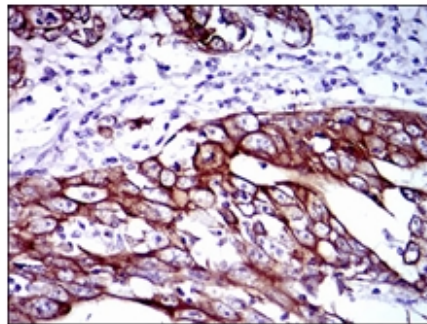
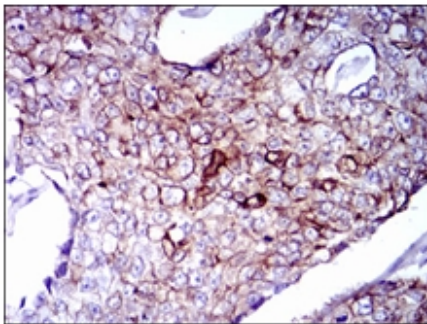
Synonyms:

KRT5, Cytokeratin-5, Keratin-5, Keratin 5, CK5, K5

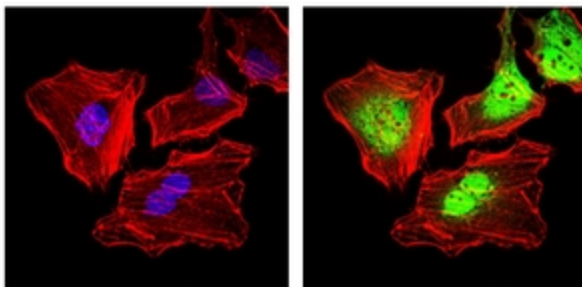
Product images:



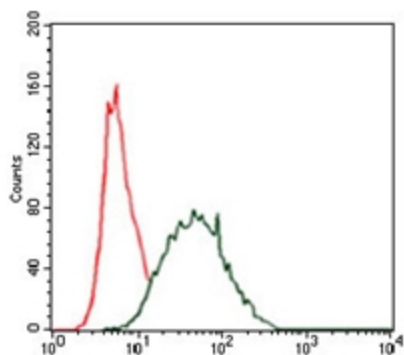
Left: Western blot analysis using Cytokeratin 5 antibody against Human CK5 (AA: 158-272) recombinant protein (Expected MW is 33.3 kDa). Right: Western blot analysis using Cytokeratin 5 antibody against A431 (1), MCF-7 (2), HeLa (3), HepG2 (4), 3T3-L1 (5), and COS-7 (6) cell lysate.



Immunohistochemical analysis of paraffin-embedded breast cancer (left) and stomach (right) tissues using Cytokeratin 5 antibody with DAB staining.



Left: Immunofluorescence analysis of HeLa cells. Red: Actin filaments have been labeled with Alexa Fluor-555 phalloidin. Right: Immunofluorescence analysis of HeLa cells using Cytokeratin 5 antibody (green). Blue: DRAQ5 fluorescent DNA dye. Red: Actin filaments have been labeled with Alexa Fluor-555 phalloidin.



Flow Cytometric analysis of HeLa cells using Cytokeratin 5 antibody (green) and negative control (red).