

Product datasheet for **AM06746PU-N**

CEBP Alpha (CEBPA) Mouse Monoclonal Antibody [Clone ID: 4E10]

Product data:

Product Type:	Primary Antibodies
Clone Name:	4E10
Applications:	ELISA, FC, WB
Recommended Dilution:	ELISA: 1/10000. Western Blot: 1/500 - 1/2000. Flow Cytometry: 1/200 - 1/400.
Reactivity:	Human
Host:	Mouse
Isotype:	IgG1
Clonality:	Monoclonal
Immunogen:	Purified recombinant fragment of Human CEBPA expressed in E. Coli.
Specificity:	Recognizes CEBPA
Formulation:	PBS State: Purified State: Liquid purified antibody Stabilizer: 0.5% protein stabilizer Preservative: 0.05% Sodium Azide
Concentration:	lot specific
Conjugation:	Unconjugated
Storage:	Store the antibody undiluted at 2-8°C for one month or (in aliquots) at -20°C for longer. Avoid repeated freezing and thawing.
Stability:	Shelf life: one year from despatch.
Predicted Protein Size:	37.5 kDa
Database Link:	Entrez Gene 1050 Human P49715



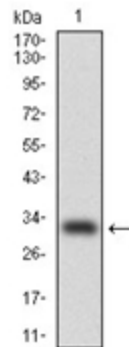
[View online »](#)

Background:

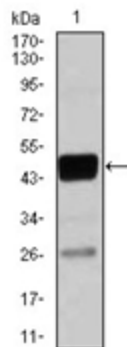
The protein encoded by this intronless gene is a bZIP transcription factor which can bind as a homodimer to certain promoters and enhancers. It can also form heterodimers with the related proteins CEBP-beta and CEBP-gamma. The encoded protein has been shown to bind to the promoter and modulate the expression of the gene encoding leptin, a protein that plays an important role in body weight homeostasis. Also, the encoded protein can interact with CDK2 and CDK4, thereby inhibiting these kinases and causing growth arrest in cultured cells.

Synonyms:

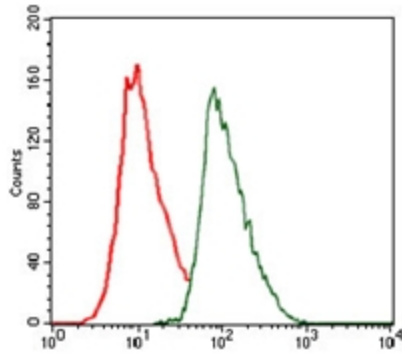
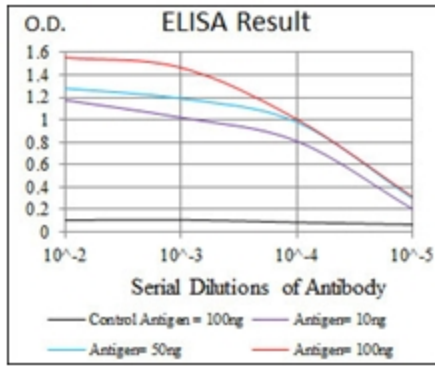
C/EBP alpha

Product images:

Western blot analysis using CEBPA antibody against human CEBPA (AA: 139-204) recombinant protein (Expected MW is 32.7 kDa)



Western blot analysis using CEBPA antibody against THP-1 (1) cell lysate.



Flow cytometric analysis of HeLa cells using CEBPA antibody (green) and negative control (red).