

## Product datasheet for **AM06745SU-N**

### **C20orf70 (BPIFA2) Mouse Monoclonal Antibody [Clone ID: 5B2]**

#### **Product data:**

Product Type:	Primary Antibodies
Clone Name:	5B2
Applications:	ELISA, FC, WB
Recommended Dilution:	<b>ELISA:</b> 1/10000. <b>Western Blot:</b> 1/500 - 1/2000. <b>Flow Cytometry:</b> 1/200 - 1/400.
Reactivity:	Human
Host:	Mouse
Isotype:	IgG1
Clonality:	Monoclonal
Immunogen:	Purified recombinant fragment of Human Splunc2 expressed in E. Coli.
Specificity:	Recognizes SPLUNC2
Formulation:	State: Ascites State: Ascitic fluid containing 0.03% Sodium Azide.
Conjugation:	Unconjugated
Storage:	Store the antibody undiluted at 2-8°C for one month or (in aliquots) at -20°C for longer. Avoid repeated freezing and thawing.
Stability:	Shelf life: one year from despatch.
Predicted Protein Size:	27 kDa
Gene Name:	BPI fold containing family A member 2
Database Link:	<a href="#">Entrez Gene 140683 Human Q96DR5</a>



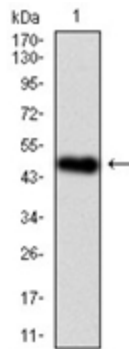
[View online »](#)

**Background:**

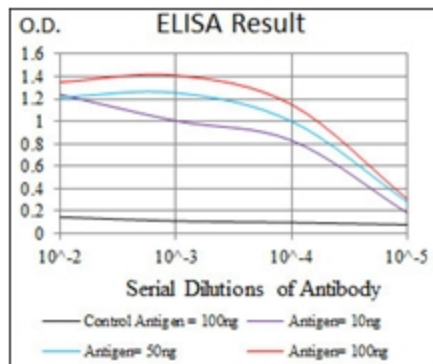
SPLUNC2 is one member of PLUNC family, the gene undergoes alternative splicing using two 5' non-coding exons, suggesting that the gene is regulated by alternative promoters. Multiple SPLUNC2 isoforms are found in the oral cavity and suggest that these proteins may be differentially regulated in distinct tissues where they may function in the innate immune response. Mucin plugs, mucous and intermediate cells of mucoepidermoid carcinomas were positive for LPLUNC1 and SPLUNC2, but areas composed of epidermoid and clear cells were negative for all PLUNCs. Papillary cystadenocarcinoma was positive for all PLUNCs.

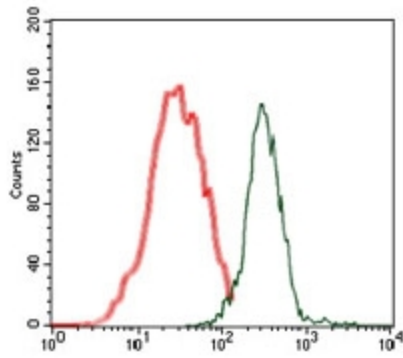
**Synonyms:**

C20orf70

**Product images:**


Western blot analysis using human Splunc2 mAb against human Splunc2 (AA: 16-250) recombinant protein. (Expected MW is 50.7 kDa)





Flow cytometric analysis of MCF-7 cells using human Splunc2 mouse mAb (green) and negative control (red).