

Product datasheet for **AM06744PU-N**

RPA70 (RPA1) Mouse Monoclonal Antibody [Clone ID: 4C4]

Product data:

Product Type:	Primary Antibodies
Clone Name:	4C4
Applications:	ELISA, FC, IF, IHC, WB
Recommended Dilution:	ELISA: 1/10000. Western Blot: 1/500 - 1/2000. Flow Cytometry: 1/200 - 1/400. Immunofluorescence: 1/200 - 1/1000. Immunohistochemistry on Paraffin Sections: 1/200 - 1/1000.
Reactivity:	Human, Monkey
Host:	Mouse
Isotype:	IgG1
Clonality:	Monoclonal
Immunogen:	Purified recombinant fragment of Human RPA1 expressed in E. Coli.
Specificity:	Recognizes RPA1
Formulation:	PBS State: Purified State: Liquid purified antibody Stabilizer: 0.5% protein stabilizer Preservative: 0.05% Sodium Azide
Concentration:	lot specific
Conjugation:	Unconjugated
Storage:	Store the antibody undiluted at 2-8°C for one month or (in aliquots) at -20°C for longer. Avoid repeated freezing and thawing.
Stability:	Shelf life: one year from despatch.
Predicted Protein Size:	68.1 kDa
Gene Name:	replication protein A1
Database Link:	Entrez Gene 6117 Human P27694



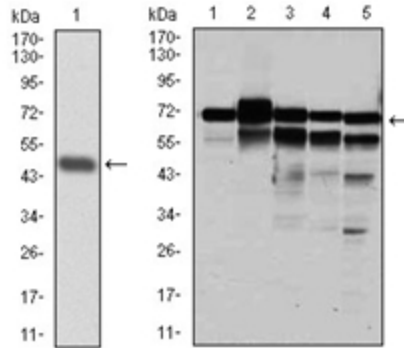
[View online »](#)

Background:

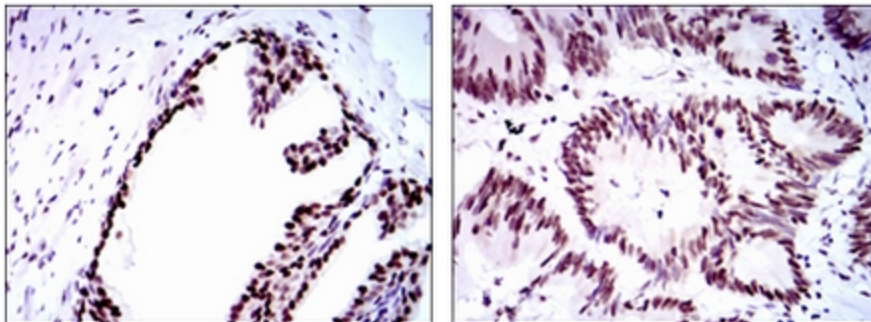
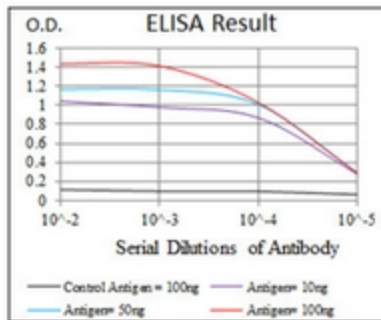
This gene Plays an essential role in several cellular processes in DNA metabolism including replication, recombination and DNA repair. Binds and subsequently stabilizes single-stranded DNA intermediates and thus prevents complementary DNA from reannealing

Synonyms:

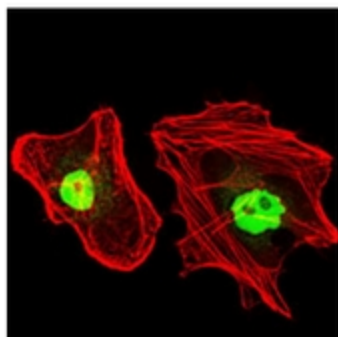
REPA1, RFA1, RF-A protein 1, RPA70, RP-A p70, Replication protein A

Product images:


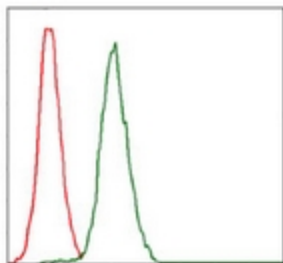
Left: Western blot analysis using RPA1 mAb against human RPA1 (AA: 308-513) recombinant protein (Expected MW is 48.3 kDa). Right: Western blot analysis using RPA1 mouse mAb against HeLa (1), MCF-7 (2), K562 (3), A431 (4), and COS-7 (6) cell lysate.



Immunohistochemical analysis of paraffin-embedded prostate tissues (left) and colon cancer tissues (right) using RPA1 antibody with DAB staining.



Immunofluorescence analysis of HeLa cells using RPA1 antibody (green). Red: Actin filaments have been labeled with Alexa Fluor-555 phalloidin.



Flow Cytometric analysis of Jurkat cells using RPA1 antibody (green) and negative control (red).