

Product datasheet for **AM06743PU-N**

Cytochrome P450 3A4 (CYP3A4) Mouse Monoclonal Antibody [Clone ID: 3H8]

Product data:

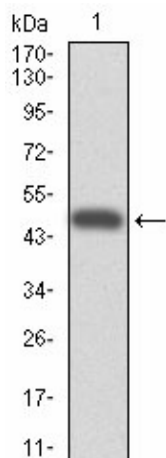
| | |
|-------------------------|--|
| Product Type: | Primary Antibodies |
| Clone Name: | 3H8 |
| Applications: | ELISA, FC, IF, IHC, WB |
| Recommended Dilution: | ELISA: 1/10000. Western Blot: 1/500-1/2000. Flow Cytometry: 1/200-1/400. Immunofluorescence: 1/200-1/1000. Immunohistochemistry on Paraffin Sections: 1/200-1/1000. |
| Reactivity: | Human |
| Host: | Mouse |
| Isotype: | IgG1 |
| Clonality: | Monoclonal |
| Immunogen: | Purified recombinant fragment of Human CYP3A4 expressed in <i>E. Coli</i> |
| Specificity: | This antibody recognizes Human CYP3A4. |
| Formulation: | PBS with 0.05% Sodium Azide as preservative and 0.5% protein stabilizer State: Purified State: Liquid purified antibody |
| Concentration: | lot specific |
| Conjugation: | Unconjugated |
| Storage: | Store undiluted at 2-8°C for one month or (in aliquots) at -20°C for longer. Avoid repeated freezing and thawing. |
| Stability: | Shelf life: one year from despatch. |
| Predicted Protein Size: | 57.3 kDa |
| Gene Name: | cytochrome P450 family 3 subfamily A member 4 |
| Database Link: | Entrez Gene 1576 Human P08684 |



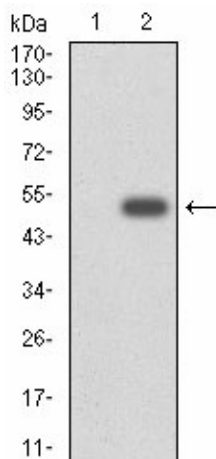
[View online »](#)

| | |
|--------------------|---|
| Background: | <p>This gene encodes a member of the cytochrome P450 superfamily of enzymes. The cytochrome P450 proteins are monooxygenases that catalyze many reactions involved in drug metabolism and synthesis of cholesterol, steroids and other lipids. This protein localizes to the endoplasmic reticulum and its expression is induced by glucocorticoids and some pharmacological agents. This enzyme is involved in the metabolism of approximately half the drugs in use today, including acetaminophen, codeine, cyclosporin A, diazepam and erythromycin. The enzyme also metabolizes some steroids and carcinogens. This gene is part of a cluster of cytochrome P450 genes on chromosome 7q21.1. Previously another CYP3A gene, CYP3A3, was thought to exist; however, it is now thought that this sequence represents a transcript variant of CYP3A4. Alternatively spliced transcript variants encoding different isoforms have been identified.</p> |
| Synonyms: | <p>CYP3A3, Cytochrome P450 3A4, CYP11A4, Nifedipine oxidase, Cytochrome P450 3A3, CYP11A3, Cytochrome P450 HLp, Cytochrome P450 NF-25, Cytochrome P450-PCN1, Albendazole monooxygenase, Albendazole sulfoxidase</p> |
| Note: | <p>Protocol: Tissue Array Results</p> <p><i>Hepatic Carcinoma:</i> Position: A5/6 and B5/6, Localization: Cytoplasm, Result: +</p> <p><i>Liver:</i> Position: C5/6, Localization: Cytoplasm, Result: +</p> <p><i>Renal Cell Carcinoma:</i> Position: D5/6, Result: -</p> <p><i>Kidney:</i> Position: E5/6, Result: -</p> <p><i>Pancreas:</i> Position: F5/6, Result: -</p> <p><i>Prostate Cancer:</i> Position: G5/6, Result: -</p> <p><i>Lymphoid tissue:</i> Position: H5/6, Result: -</p> <p><i>Lung Cancer:</i> Position: A7/8 and B7/8, Result: -</p> <p><i>Lung:</i> Position: C7/8, Result: -</p> <p><i>Brain:</i> Position: D7/8, Localization: Nucleus and Cytoplasm, Result: +</p> <p><i>Brain:</i> Position: E7/8, Localization: Cytoplasm, Result: +</p> <p><i>Medulla oblongata:</i> Position: F7/8, Localization: Cytoplasm, Result: +</p> <p><i>Cerebellar:</i> Position: G7/8, Localization: Cytoplasm, Result: +</p> <p><i>Esophageal Cancer:</i> Position: A1/2 and B1/2, Result: -</p> <p><i>Esophagus:</i> Position: Position: C1/2 and D1/2, Result: -</p> <p><i>Stomach Cancer:</i> Position: E1/2 and F1/2, Result: -</p> <p><i>Stomach:</i> Position: G1/2 and H1/2, Result: -</p> <p><i>Colon Cancer:</i> Position: A3/4 and B3/4, Result: -</p> <p><i>Colon:</i> Position: C3/4, Result: -</p> <p><i>Duodenum:</i> Position: C3/4, Result: -</p> <p><i>Rectal Cancer:</i> Position: E3/4 and F3/4, Result: -</p> <p><i>Rectum:</i> Position: G3/4, Result: -</p> <p><i>Testis:</i> Position: H3/4, Result: -</p> |

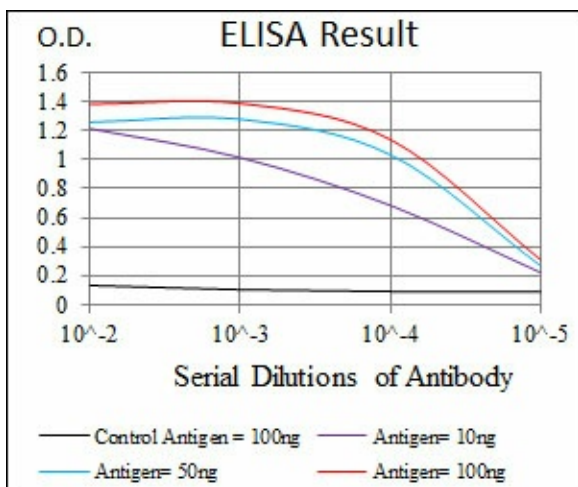
Product images:



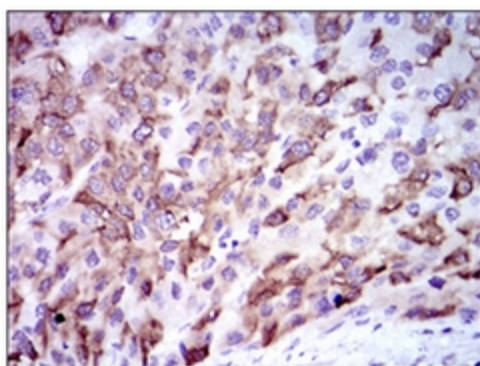
Western blot analysis using CYP3A4 Mouse mAb against human CYP3A4 (AA: 243-430) recombinant protein. (Expected MW is 47.5 kDa)



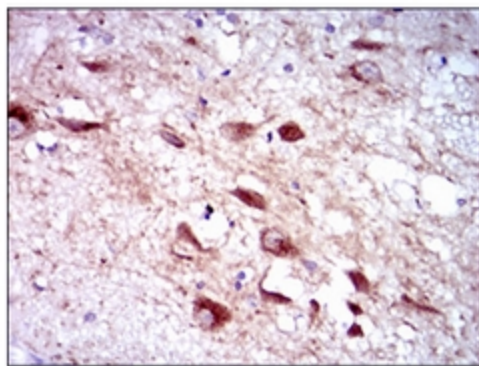
Western blot analysis using CYP3A4 Mouse mAb against HEK293 (1) and CYP3A4 (AA: 243-430)-hlgGfc transfected HEK293 (2) cell lysate.



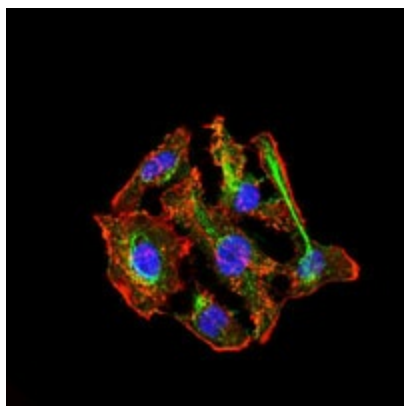
Red: Control Antigen (100ng) Purple: Antigen (10ng) Green: Antigen (50ng) Blue: Antigen (100ng)



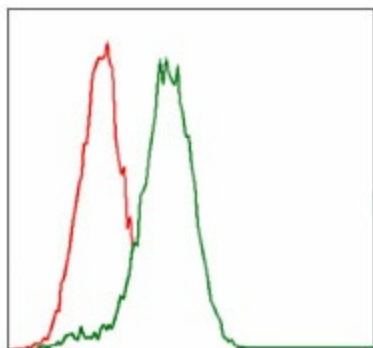
Immunohistochemical analysis of paraffin-embedded liver cancer tissues using CYP3A4 Mouse mAb with DAB staining.



Immunohistochemical analysis of paraffin-embedded human brain tissues using CYP3A4 Mouse mAb with DAB staining.



Immunofluorescence analysis of HepG2 cells using CYP3A4 Mouse mAb (green). Blue: DRAQ5 fluorescent DNA dye. Red: Actin filaments have been labeled with Alexa Fluor-555 phalloidin.



Flow cytometric analysis of HepG2 cells using CYP3A4 Mouse mAb (green) and negative control (red).