

Product datasheet for **AM06741PU-N**

CDK2 Mouse Monoclonal Antibody [Clone ID: 1A6]

Product data:

Product Type:	Primary Antibodies
Clone Name:	1A6
Applications:	ELISA, FC, IF, IHC, WB
Recommended Dilution:	ELISA: 1/10000. Western Blot: 1/500 - 1/2000. Immunofluorescence: 1/200 - 1/1000. Flow Cytometry: 1/200 - 1/400. Immunohistochemistry on Paraffin Sections: 1/200 - 1/1000.
Reactivity:	Human, Mouse
Host:	Mouse
Isotype:	IgG1
Clonality:	Monoclonal
Immunogen:	Purified recombinant fragment of Human CDK2 expressed in E. Coli.
Formulation:	PBS State: Purified State: Liquid purified antibody Stabilizer: 0.5% protein stabilizer Preservative: 0.05% Sodium Azide
Concentration:	lot specific
Conjugation:	Unconjugated
Storage:	Store the antibody undiluted at 2-8°C for one month or (in aliquots) at -20°C for longer. Avoid repeated freezing and thawing.
Stability:	Shelf life: one year from despatch.
Predicted Protein Size:	33.9 kDa
Gene Name:	cyclin-dependent kinase 2
Database Link:	Entrez Gene 1017 Human P24941



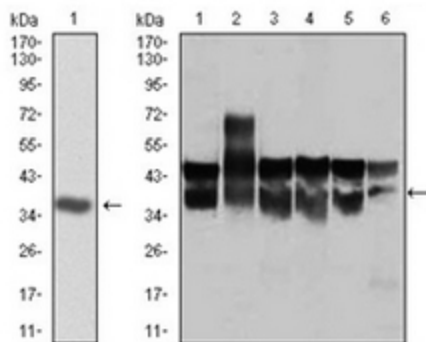
[View online »](#)

Background:

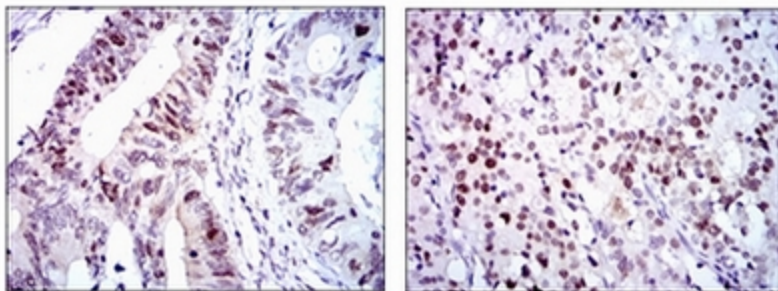
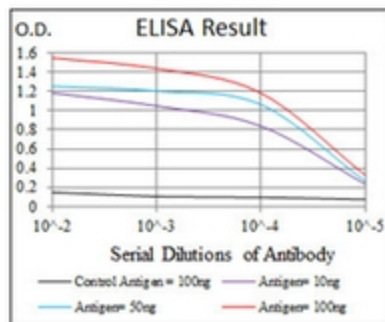
Cdk2 is a member of the Ser/Thr protein kinase family. It is highly similar to the gene products of *S. cerevisiae* cdc28, and *S. pombe* cdc2. It is a catalytic subunit of the cyclin-dependent protein kinase complex, whose activity is restricted to the G1-S phase, and is essential for cell cycle G1/S phase transition. This protein associates with and is regulated by the regulatory subunits of the complex including cyclin A or E, CDK inhibitor p21Cip1 (CDKN1A) and p27Kip1 (CDKN1B). Its activity is also regulated by protein phosphorylation. Two alternatively spliced variants and multiple transcription initiation sites of this gene have been reported.

Synonyms:

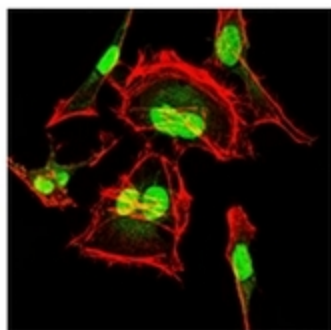
p33 protein kinase

Product images:


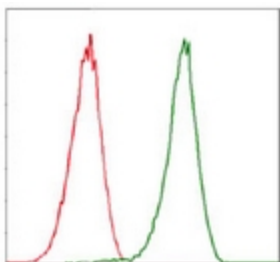
Left: Western blot analysis using CDK2 antibody against human CDK2 (AA: 197-295) recombinant protein (Expected MW is 36.8 kDa). Right: Western blot analysis using CDK2 antibody against Jurkat (1), HL-60 (2), K562 (3), A431 (4), HeLa (5), and NIH3T3 (6) cell lysate.



Immunohistochemical analysis of paraffin-embedded colon cancer (left) and cervical cancer (right) tissues using CDK2 antibody with DAB staining.



Immunofluorescence analysis of HeLa cells using CDK2 antibody (green). Red: Actin filaments have been labeled with Alexa Fluor-555 phalloidin.



Flow Cytometric analysis of Jurkat cells using CDK2 antibody (green) and negative control (red).