

Product datasheet for **AM06735PU-N**

Integrin beta 1 (ITGB1) Mouse Monoclonal Antibody [Clone ID: 3B6B2]

Product data:

Product Type:	Primary Antibodies
Clone Name:	3B6B2
Applications:	ELISA, FC, WB
Recommended Dilution:	ELISA: 1/10000. Western Blot: 1/500 - 1/2000. Flow Cytometry: 1/200 - 1/400.
Reactivity:	Human
Host:	Mouse
Isotype:	IgG1
Clonality:	Monoclonal
Immunogen:	Purified recombinant fragment of Human ITGB1 expressed in E. Coli.
Specificity:	Recognizes CD29 / Integrin beta-1
Formulation:	PBS State: Purified State: Liquid purified antibody Stabilizer: 0.5% protein stabilizer Preservative: 0.05% Sodium Azide
Concentration:	lot specific
Conjugation:	Unconjugated
Storage:	Store the antibody undiluted at 2-8°C for one month or (in aliquots) at -20°C for longer. Avoid repeated freezing and thawing.
Stability:	Shelf life: one year from despatch.
Predicted Protein Size:	88.4 kDa
Gene Name:	integrin subunit beta 1
Database Link:	Entrez Gene 3688 Human P05556



[View online »](#)

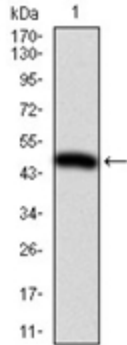
Background:

Integrins are heterodimeric proteins made up of alpha and beta subunits. At least 18 alpha and 8 beta subunits have been described in mammals. Integrin family members are membrane receptors involved in cell adhesion and recognition in a variety of processes including embryogenesis, hemostasis, tissue repair, immune response and metastatic diffusion of tumor cells. This gene encodes a beta subunit. Multiple alternatively spliced transcript variants which encode different protein isoforms have been found for this gene.

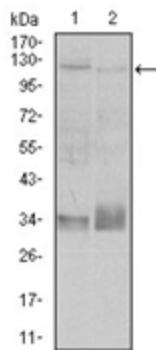
Synonyms:

Fibronectin receptor subunit beta, Integrin VLA-4 subunit beta, ITGB1, FNRB, MDF2, MSK12

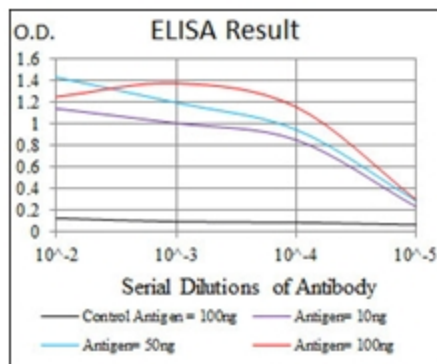
Product images:

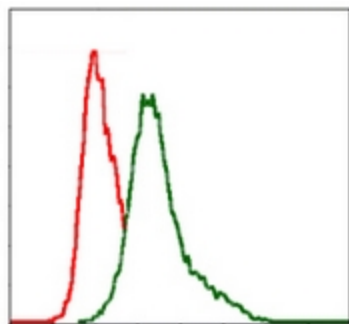


Western blot analysis using ITGB1 antibody against human ITGB1 (AA: 50-270) recombinant protein (Expected MW is 50.6 kDa).



Western blot analysis using ITGB1 antibody against A549 (1), and Jurkat (2) cell lysate.





Flow cytometric analysis of MCF-7 cells using ITGB antibody (green) and negative control (red).