

Product datasheet for **AM06734PU-N**

Integrin beta 1 (ITGB1) Mouse Monoclonal Antibody [Clone ID: 3B6]

Product data:

| | |
|-------------------------|--|
| Product Type: | Primary Antibodies |
| Clone Name: | 3B6 |
| Applications: | ELISA, FC, IHC, WB |
| Recommended Dilution: | ELISA: 1/10000. Western Blot: 1/500 - 1/2000. Flow Cytometry: 1/200 - 1/400. Immunohistochemistry on Paraffin Sections: 1/200 - 1/1000. |
| Reactivity: | Human, Monkey |
| Host: | Mouse |
| Isotype: | IgG1 |
| Clonality: | Monoclonal |
| Immunogen: | Purified recombinant fragment of Human ITGB1 expressed in E. Coli. |
| Specificity: | Recognizes CD29 / Integrin beta-1 |
| Formulation: | PBS State: Purified State: Liquid purified antibody Stabilizer: 0.5% protein stabilizer Preservative: 0.05% Sodium Azide |
| Concentration: | lot specific |
| Conjugation: | Unconjugated |
| Storage: | Store the antibody undiluted at 2-8°C for one month or (in aliquots) at -20°C for longer. Avoid repeated freezing and thawing. |
| Stability: | Shelf life: one year from despatch. |
| Predicted Protein Size: | 88.4 kDa |
| Gene Name: | integrin subunit beta 1 |
| Database Link: | Entrez Gene 3688 Human P05556 |



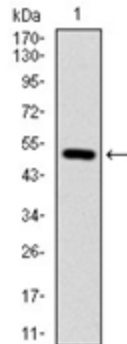
[View online »](#)

Background:

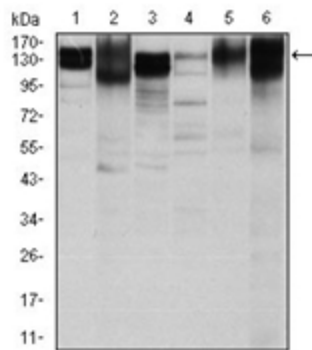
Integrins are heterodimeric proteins made up of alpha and beta subunits. At least 18 alpha and 8 beta subunits have been described in mammals. Integrin family members are membrane receptors involved in cell adhesion and recognition in a variety of processes including embryogenesis, hemostasis, tissue repair, immune response and metastatic diffusion of tumor cells. This gene encodes a beta subunit. Multiple alternatively spliced transcript variants which encode different protein isoforms have been found for this gene.

Synonyms:

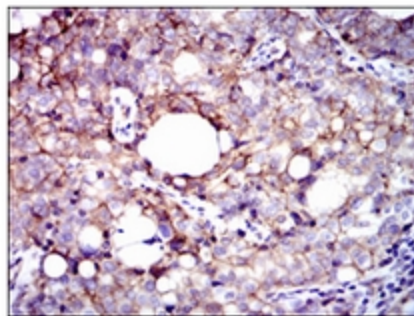
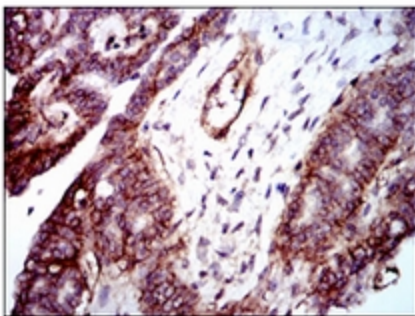
Fibronectin receptor subunit beta, Integrin VLA-4 subunit beta, ITGB1, FNRB, MDF2, MSK12

Product images:


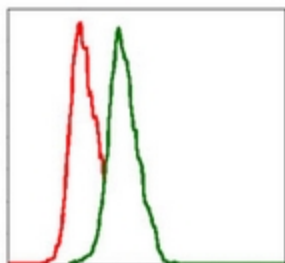
Western blot analysis using ITGB1 antibody against human ITGB1 (AA: 50-270) recombinant protein (Expected MW is 50.6 kDa).



Western blot analysis using ITGB1 antibody against HeLa (1), HepG2 (2), A549 (3), Jurkat (4), L1210 (5) and Cos7 (6) cell lysate.



Immunohistochemical analysis of paraffin-embedded ovarian cancer tissues (left) and cervical cancer tissues (right) using ITGB1 antibody with DAB staining.



Flow cytometric analysis of Hela cells using ITGB1 antibody (green) and negative control (red).