

Product datasheet for **AM06731PU-N**

FOXO1 Mouse Monoclonal Antibody [Clone ID: 3B6]

Product data:

Product Type:	Primary Antibodies
Clone Name:	3B6
Applications:	ELISA, IF, IHC, WB
Recommended Dilution:	ELISA: 1/10000. Western Blot: 1/500 - 1/2000. Immunofluorescence: 1/200 - 1/1000. Immunohistochemistry on Paraffin Sections: 1/200 - 1/1000.
Reactivity:	Human, Mouse
Host:	Mouse
Isotype:	IgG1
Clonality:	Monoclonal
Immunogen:	Purified recombinant fragment of Human FOXO1 expressed in E. Coli.
Specificity:	Recognizes FOXO1
Formulation:	PBS State: Purified State: Liquid purified antibody Stabilizer: 0.5% protein stabilizer Preservative: 0.05% Sodium Azide
Concentration:	lot specific
Conjugation:	Unconjugated
Storage:	Store the antibody undiluted at 2-8°C for one month or (in aliquots) at -20°C for longer. Avoid repeated freezing and thawing.
Stability:	Shelf life: one year from despatch.
Gene Name:	forkhead box O1
Database Link:	Entrez Gene 2308 Human Q12778



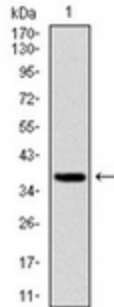
[View online »](#)

Background:

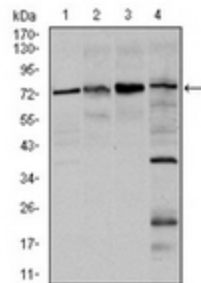
This gene belongs to the forkhead family of transcription factors which are characterized by a distinct forkhead domain. The specific function of this gene has not yet been determined; however, it may play a role in myogenic growth and differentiation. Translocation of this gene with PAX3 has been associated with alveolar rhabdomyosarcoma.

Synonyms:

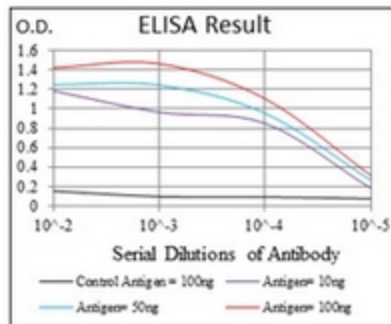
Forkhead Box Protein O1, FOXO1, FKHR

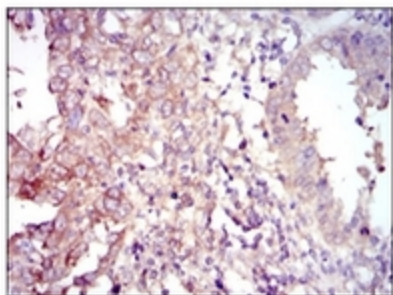
Product images:


Western blot analysis using FOXO1 antibody against human FOXO1 (AA: 471-600) recombinant protein (Expected MW is 39.3 kDa).

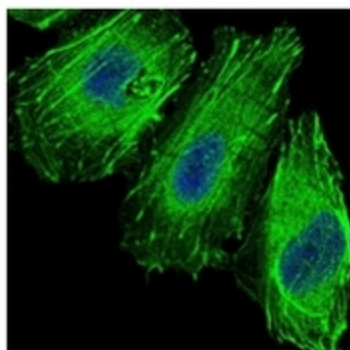


Western blot analysis using FOXO1 antibody against HeLa (1), HEK293 (2), MCF-7 (3), and C6 (4) cell lysate.





Immunohistochemical analysis of paraffin-embedded intima cancer tissues using FOXO1 antibody with DAB staining.



Immunofluorescence analysis of HeLa cells using FOXO1 antibody (green). Blue: DRAQ5 fluorescent DNA dye.