

Product datasheet for **AM06730PU-N**

CD95 (FAS) Mouse Monoclonal Antibody [Clone ID: 4F8H6]

Product data:

Product Type:	Primary Antibodies
Clone Name:	4F8H6
Applications:	ELISA, FC, IF, WB
Recommended Dilution:	ELISA: 1/10000. Western Blot: 1/500 - 1/2000. Immunofluorescence: 1/200 - 1/1000. Flow Cytometry: 1/200 - 1/400.
Reactivity:	Human
Host:	Mouse
Isotype:	IgG1
Clonality:	Monoclonal
Immunogen:	Purified recombinant fragment of Human FAS expressed in E. Coli.
Specificity:	Recognizes CD95 / FAS
Formulation:	PBS State: Purified State: Liquid purified antibody Stabilizer: 0.5% protein stabilizer Preservative: 0.05% Sodium Azide
Concentration:	lot specific
Conjugation:	Unconjugated
Storage:	Store the antibody undiluted at 2-8°C for one month or (in aliquots) at -20°C for longer. Avoid repeated freezing and thawing.
Stability:	Shelf life: one year from despatch.
Predicted Protein Size:	37.7 kDa
Gene Name:	Fas cell surface death receptor
Database Link:	Entrez Gene 355 Human P25445



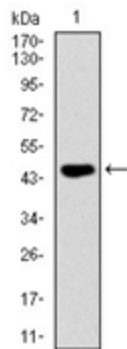
[View online »](#)

Background:

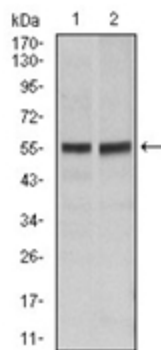
Fas (APO-1, CD95) is a 45 kDa cell surface protein that mediates apoptosis when crosslinked with agonistic anti-Fas antibodies or Fas ligand (FasL). FasL is a tumor necrosis factor (TNF)-related type II membrane protein and is expressed in various tissue and cells. Both Fas and FasL are thought to play an important role in the apoptosis processes that takes place during T cell development.

Synonyms:

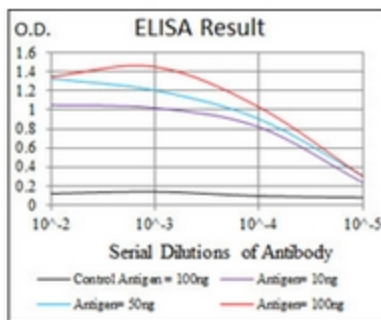
FASLG receptor, Apo-1 antigen, APT1, FAS1, TNFRSF6

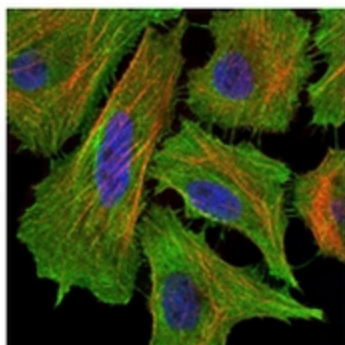
Product images:


Western blot analysis using FAS antibody against human FAS (AA: 87-278) recombinant protein (Expected MW is 47.2 kDa).

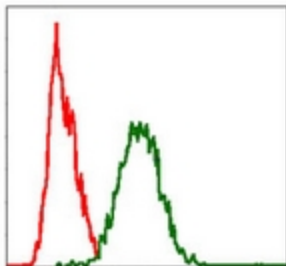


Western blot analysis using FAS antibody against Hela (1), Jurkat (2) cell lysate.





Immunofluorescence analysis of HeLa cells using FAS antibody (green). Blue: DRAQ5 fluorescent DNA dye. Red: Actin filaments have been labeled with Alexa Fluor-555 phalloidin.



Flow cytometric analysis of HeLa cells using FAS antibody (green) and negative control (red).