

Product datasheet for **AM06729PU-N**

RAF1 Mouse Monoclonal Antibody [Clone ID: 4G4]

Product data:

Product Type:	Primary Antibodies
Clone Name:	4G4
Applications:	ELISA, FC, IHC, WB
Recommended Dilution:	ELISA: 1/10000. Western Blot: 1/500 - 1/2000. Flow Cytometry: 1/200 - 1/400. Immunohistochemistry on Paraffin Sections: 1/200 - 1/1000.
Reactivity:	Human
Host:	Mouse
Isotype:	IgG1
Clonality:	Monoclonal
Immunogen:	Purified recombinant fragment of Human RAF1 expressed in E. Coli.
Specificity:	This antibody recognizes RAF1
Formulation:	State: Purified State: Liquid purified antibody in PBS containing 0.05% Sodium Azide and 0.5% protein stabilizer
Concentration:	lot specific
Conjugation:	Unconjugated
Storage:	Store the antibody undiluted at 2-8°C for one month or (in aliquots) at -20°C for longer. Avoid repeated freezing and thawing.
Stability:	Shelf life: one year from despatch.
Gene Name:	Raf-1 proto-oncogene, serine/threonine kinase
Database Link:	Entrez Gene 5894 Human P04049



[View online »](#)

Background:

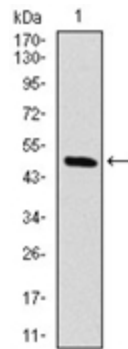
This gene is the cellular homolog of viral raf gene (v-raf). The encoded protein is a MAP kinase kinase kinase (MAP3K), which functions downstream of the Ras family of membrane associated GTPases to which it binds directly. Once activated, the cellular RAF1 protein can phosphorylate to activate the dual specificity protein kinases MEK1 and MEK2, which in turn phosphorylate to activate the serine/threonine specific protein kinases, ERK1 and ERK2. Activated ERKs are pleiotropic effectors of cell physiology and play an important role in the control of gene expression involved in the cell division cycle, apoptosis, cell differentiation and cell migration. Mutations in this gene are associated with Noonan syndrome 5 and LEOPARD syndrome 2.

Synonyms:

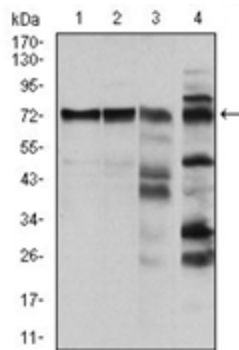
C-RAF, Raf-1, cRaf

Note:

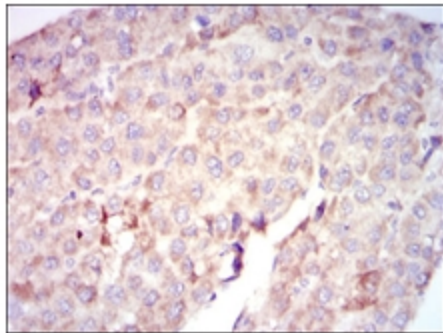
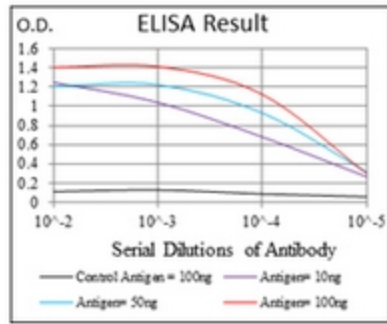
Tissue Array Results: Hepatic Carcinoma (+, Cytoplasm, B5/6), Skeletal muscle (+, Cytoplasm, H7/8), Liver (+, Cytoplasm, C5/6).

Product images:


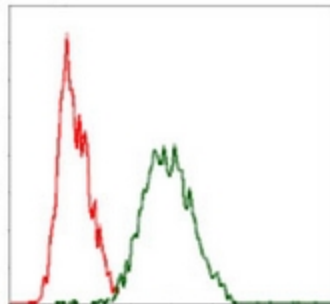
Western blot analysis using RAF1 antibody Cat.-No AM06729PU-N against human RAF1 (AA: 198-407) recombinant protein (Expected MW is 73 kDa).



Western blot analysis using RAF1 antibody Cat.-No AM06729PU-N against HeLa (1), A431 (2), Cos7 (3) and C6 (4) cell lysate.



Immunohistochemical analysis of paraffin-embedded liver cancer tissues using RAF1 antibody Cat.-No AM06729PU-N with DAB staining.



Flow cytometric analysis of Hela cells using RAF1 antibody Cat.-No AM06729PU-N (green) and negative control (red).