

## Product datasheet for **AM06728SU-N**

### CD30 (TNFRSF8) Mouse Monoclonal Antibody [Clone ID: 3B10]

#### Product data:

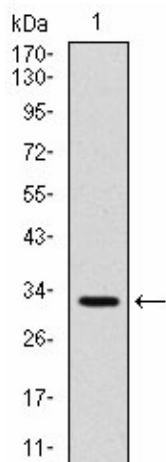
Product Type:	Primary Antibodies
Clone Name:	3B10
Applications:	ELISA, FC, WB
Recommended Dilution:	<b>Western Blot:</b> 1/500 - 1/2000. <b>Flow cytometry:</b> 1/200 - 1/400. <b>ELISA:</b> 1/10000.
Reactivity:	Human
Host:	Mouse
Isotype:	IgG1
Clonality:	Monoclonal
Immunogen:	Purified recombinant fragment of human CD30 expressed in E. Coli.
Specificity:	This antibody reacts to CD30.
Formulation:	State: Ascites State: Ascitic fluid containing 0.03% sodium azide.
Conjugation:	Unconjugated
Storage:	Store the antibody undiluted at 2-8°C for one month or (in aliquots) at -20°C for longer. Avoid repeated freezing and thawing.
Stability:	Shelf life: one year from despatch.
Gene Name:	tumor necrosis factor receptor superfamily member 8
Database Link:	<a href="#">Entrez Gene 943 Human P28908</a>
Background:	The protein encoded by this gene is a member of the TNF-receptor superfamily. This receptor is expressed by activated, but not by resting, T and B cells. TRAF2 and TRAF5 can interact with this receptor, and mediate the signal transduction that leads to the activation of NF-kappaB. This receptor is a positive regulator of apoptosis, and also has been shown to limit the proliferative potential of autoreactive CD8 effector T cells and protect the body against autoimmunity. Two alternatively spliced transcript variants of this gene encoding distinct isoforms have been reported.



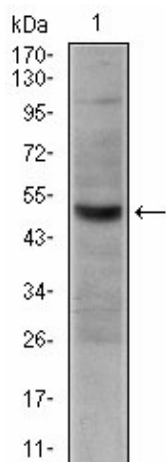
[View online »](#)

Synonyms: TNFRSF8, D1S166E, CD30L receptor, KI-1 antigen

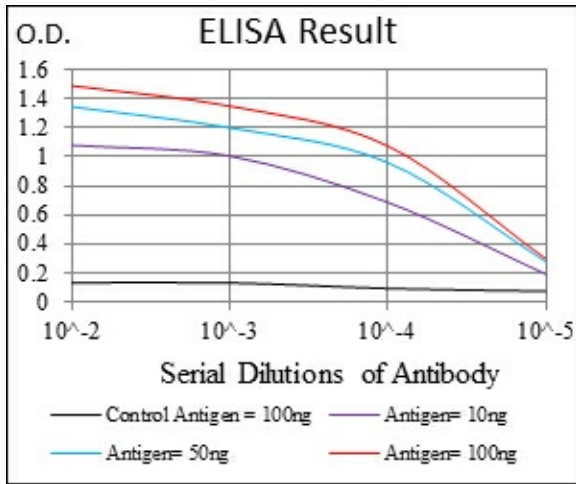
**Product images:**



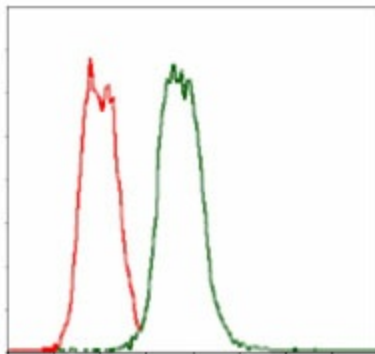
Western blot analysis using CD30 mAb against human CD30 (AA: 536-590) recombinant protein. (Expected MW is 32 kDa)



Western blot analysis using CD30 mouse mAb against HeLa cell lysate.



Red: Control Antigen (100ng) Purple: Antigen (10ng) Green: Antigen (50ng) Blue: Antigen (100ng)



Flow cytometric analysis of HeLa cells using CD30 mouse mAb (green) and negative control (red).