

Product datasheet for **AM06725PU-N**

COTL1 Mouse Monoclonal Antibody [Clone ID: 5C8]

Product data:

Product Type:	Primary Antibodies
Clone Name:	5C8
Applications:	ELISA, IHC, WB
Recommended Dilution:	ELISA: 1/10000. Western Blot: 1/500 - 1/2000. Immunohistochemistry on Paraffin Sections: 1/200 - 1/1000.
Reactivity:	Human
Host:	Mouse
Isotype:	IgG1
Clonality:	Monoclonal
Immunogen:	Purified recombinant fragment of Human COTL1 expressed in E. Coli.
Specificity:	Recognizes Coactosin-like protein (COLT1).
Formulation:	PBS State: Purified State: Liquid purified antibody Stabilizer: 0.5% protein stabilizer Preservative: 0.05% Sodium Azide
Concentration:	lot specific
Conjugation:	Unconjugated
Storage:	Store the antibody undiluted at 2-8°C for one month or (in aliquots) at -20°C for longer. Avoid repeated freezing and thawing.
Stability:	Shelf life: one year from despatch.
Predicted Protein Size:	16 kDa
Gene Name:	coactosin like F-actin binding protein 1
Database Link:	Entrez Gene 23406 Human Q14019



[View online »](#)

Background:

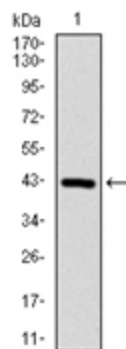
This gene encodes one of the numerous actin-binding proteins which regulate the actin cytoskeleton. This protein binds F-actin, and also interacts with 5-lipoxygenase, which is the first committed enzyme in leukotriene biosynthesis. Although this gene has been reported to map to chromosome 17 in the Smith-Magenis syndrome region, the best alignments for this gene are to chromosome 16. The Smith-Magenis syndrome region is the site of two related pseudogenes.

Synonyms:

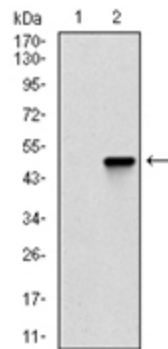
COTL1, CLP

Note:**Tissue Array Results**

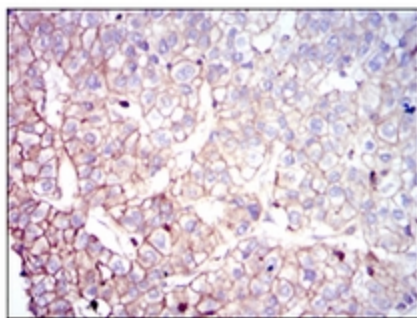
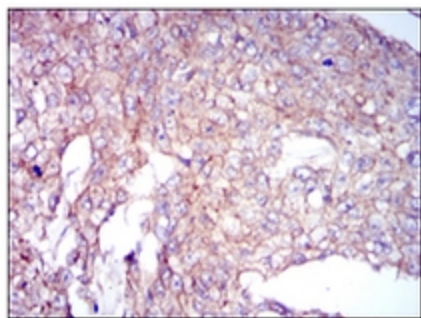
Colon cancer, Rectal cancer, Hepatic Carcinoma, Liver cancer, Renal cell Carcinoma, Kidney, Prostate cancer, Lung cancer, Breast cancer, Ovarian cancer, Endometrial cancer, Cervical cancer, Bladder cancer, Myocardial.

Product images:

Western blot analysis using COTL1 antibody against human COTL1 (AA: 1-142) recombinant protein (Expected MW is 16 kDa)



Western blot analysis using COTL1 antibody against HEK293 (1) and COTL1 (AA: 1-142)-hlgGfc transfected HEK293 (2) cell lysate.



Immunohistochemical analysis of paraffin-embedded breast cancer (left) and liver cancer (right) tissues using COTL1 antibody with DAB staining.