

## Product datasheet for **AM06724PU-N**

### **S6K1 (RPS6KB1) Mouse Monoclonal Antibody [Clone ID: 5G9]**

#### Product data:

Product Type:	Primary Antibodies
Clone Name:	5G9
Applications:	ELISA, FC, IHC, WB
Recommended Dilution:	<b>ELISA:</b> 1/10000. <b>Western Blot:</b> 1/500 - 1/2000. <b>Flow Cytometry:</b> 1/200 - 1/400. <b>Immunohistochemistry on Paraffin Sections:</b> 1/200 - 1/1000.
Reactivity:	Human
Host:	Mouse
Isotype:	IgG1
Clonality:	Monoclonal
Immunogen:	Purified recombinant fragment of Human RPS6KB1 expressed in E. Coli.
Specificity:	Recognizes RPS6KB1 / STK14A
Formulation:	PBS State: Purified State: Liquid purified antibody Stabilizer: 0.5% protein stabilizer Preservative: 0.05% Sodium Azide
Concentration:	lot specific
Conjugation:	Unconjugated
Storage:	Store the antibody undiluted at 2-8°C for one month or (in aliquots) at -20°C for longer. Avoid repeated freezing and thawing.
Stability:	Shelf life: one year from despatch.
Predicted Protein Size:	59 kDa
Gene Name:	ribosomal protein S6 kinase B1
Database Link:	<a href="#">Entrez Gene 6198 Human P23443</a>



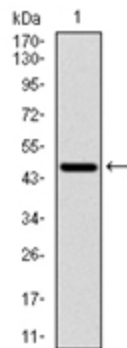
[View online »](#)

**Background:**

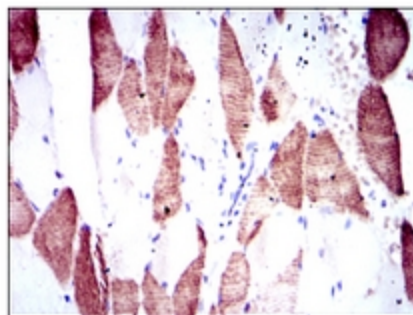
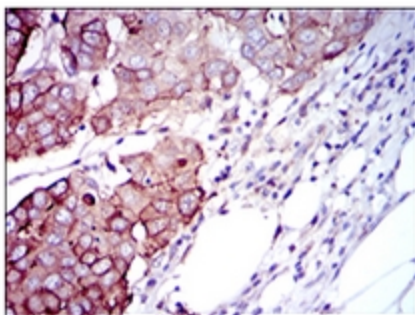
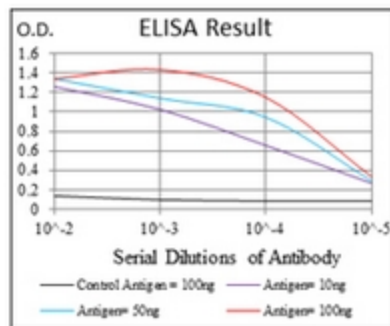
This gene encodes a member of the RSK (ribosomal S6 kinase) family of serine/threonine kinases. This kinase contains 2 non-identical kinase catalytic domains and phosphorylates several residues of the S6 ribosomal protein. The kinase activity of this protein leads to an increase in protein synthesis and cell proliferation. Amplification of the region of DNA encoding this gene and overexpression of this kinase are seen in some breast cancer cell lines. Alternate translational start sites have been described and alternate transcriptional splice variants have been observed but have not been thoroughly characterized.

**Synonyms:**

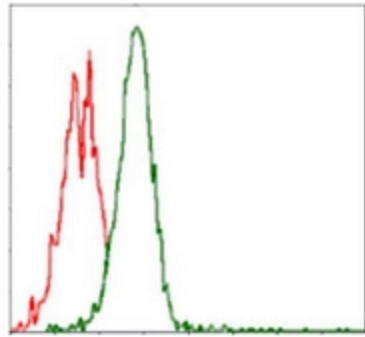
Ribosomal protein S6 kinase I, S6K1, p70 S6 kinase alpha, p70 S6K-alpha, p70 S6KA, Serine/threonine-protein kinase 14A

**Product images:**


Western blot analysis using RPS6KB1 antibody against human RPS6KB1 (AA: 295-524) recombinant protein (Expected MW is 59 kDa).



Immunohistochemical analysis of paraffin-embedded breast cancer tissues (left) and muscle tissues (right) using RPS6KB1 antibody with DAB staining.



Flow Cytometric analysis of Jurkat cells using RPS6KB1 antibody (green) and negative control (red).