

Product datasheet for **AM06720SU-N**

SKP1 Mouse Monoclonal Antibody [Clone ID: 1H9]

Product data:

Product Type:	Primary Antibodies
Clone Name:	1H9
Applications:	ELISA, FC, IHC, WB
Recommended Dilution:	ELISA: 1/10000. Western Blot: 1/500 - 1/2000. Flow Cytometry: 1/200 - 1/400. Immunohistochemistry on Paraffin Sections: 1/200 - 1/1000.
Reactivity:	Human
Host:	Mouse
Isotype:	IgG1
Clonality:	Monoclonal
Immunogen:	Purified recombinant fragment of Human SKP1 expressed in E. Coli.
Specificity:	Recognizes SKP1 / OCP2
Formulation:	State: Ascites State: Ascitic fluid containing 0.03% Sodium Azide.
Conjugation:	Unconjugated
Storage:	Store the antibody undiluted at 2-8°C for one month or (in aliquots) at -20°C for longer. Avoid repeated freezing and thawing.
Stability:	Shelf life: one year from despatch.
Predicted Protein Size:	19 kDa
Gene Name:	S-phase kinase-associated protein 1
Database Link:	Entrez Gene 6500 Human P63208



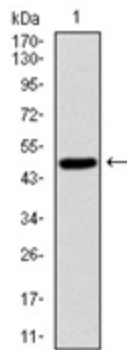
[View online »](#)

Background:

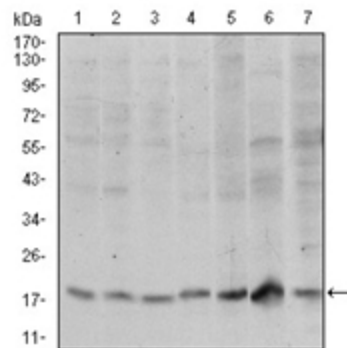
This gene encodes a component of SCF complexes, which are composed of this protein, cullin 1, a ring-box protein, and one member of the F-box family of proteins. This protein binds directly to the F-box motif found in F-box proteins. SCF complexes are involved in the regulated ubiquitination of specific protein substrates, which targets them for degradation by the proteasome. Specific F-box proteins recognize different target protein(s), and many specific SCF substrates have been identified including regulators of cell cycle progression and development. Studies have also characterized the protein as an RNA polymerase II elongation factor. Alternative splicing of this gene results in two transcript variants. A related pseudogene has been identified on chromosome 7.

Synonyms:

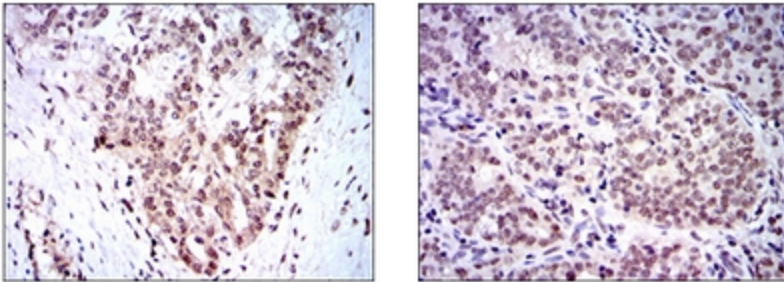
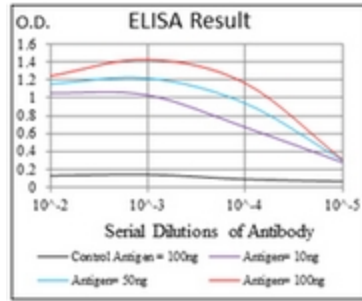
SKP1A, p19skp1, p19A, OCP-2, OCP-II, EMC19, TCEB1L

Product images:


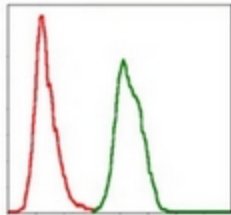
Western blot analysis using SKP1 antibody Cat.-No AM06720SU-N against human SKP1 (AA: 1-160) recombinant protein (Expected MW is 50 kDa).



Western blot analysis using SKP1 antibody Cat.-No AM06720SU-N against HeLa (1), RAJI (2), Jurkat (3), MCF-7 (4), HepG2 (5), PC-12 (6) and Cos7 (7) cell lysate.



Immunohistochemical analysis of paraffin-embedded ovarian cancer tissues (left) and cervical cancer tissues (right) using SKP1 antibody Cat.-No AM06720SU-N with DAB staining.



Flow Cytometric analysis of HeLa cells using SKP1 antibody Cat.-No AM06720SU-N (green) and negative control (red).