

## Product datasheet for **AM06719PU-N**

### **NEDD8 Mouse Monoclonal Antibody [Clone ID: 5B8]**

#### **Product data:**

Product Type:	Primary Antibodies
Clone Name:	5B8
Applications:	ELISA, FC, IF, IHC, WB
Recommended Dilution:	<b>ELISA:</b> 1/10000. <b>Western Blot:</b> 1/500-1/2000. <b>Flow Cytometry:</b> 1/200-1/400. <b>Immunofluorescence:</b> 1/200-1/1000. <b>Immunohistochemistry on Paraffin Sections:</b> 1/200 - 1/1000.
Reactivity:	Human
Host:	Mouse
Isotype:	IgG1
Clonality:	Monoclonal
Immunogen:	Purified recombinant fragment of Human NEDD8 expressed in E. Coli.
Specificity:	Recognizes NEDD8
Formulation:	PBS State: Purified State: Liquid purified antibody Stabilizer: 0.5% protein stabilizer Preservative: 0.05% Sodium Azide
Concentration:	lot specific
Conjugation:	Unconjugated
Storage:	Store undiluted at 2-8°C for one month or (in aliquots) at -20°C for longer. Avoid repeated freezing and thawing.
Stability:	Shelf life: one year from despatch.
Predicted Protein Size:	9 kDa
Gene Name:	neural precursor cell expressed, developmentally down-regulated 8
Database Link:	<a href="#">Entrez Gene 4738 Human Q15843</a>



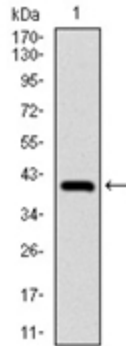
[View online »](#)

**Background:**

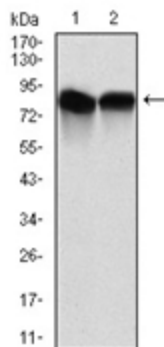
Ubiquitin-like protein which plays an important role in cell cycle control and embryogenesis. Covalent attachment to its substrates requires prior activation by the E1 complex UBE1C-APPBP1 and linkage to the E2 enzyme UBE2M. Attachment of NEDD8 to cullins activates their associated E3 ubiquitin ligase activity, and thus promotes polyubiquitination and proteasomal degradation of cyclins and other regulatory proteins. Tissue specificity: Highly expressed in heart, skeletal muscle, spleen, thymus, prostate, testis, ovary, colon and leukocytes.

**Synonyms:**

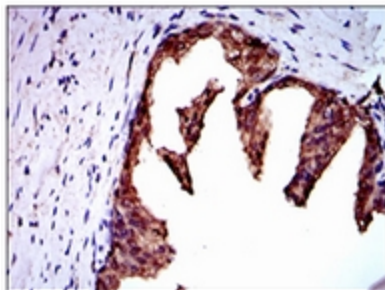
APPBP1; FLJ43224; MGC104393; MGC125896; MGC125897; NAE1; Nedd-8; Neddylin

**Product images:**


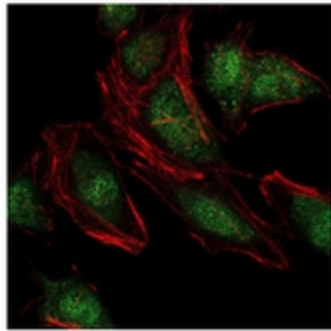
Western blot analysis using NEDD8 antibody against human NEDD8 (AA: 1-81) recombinant protein (Expected MW is 40 kDa).



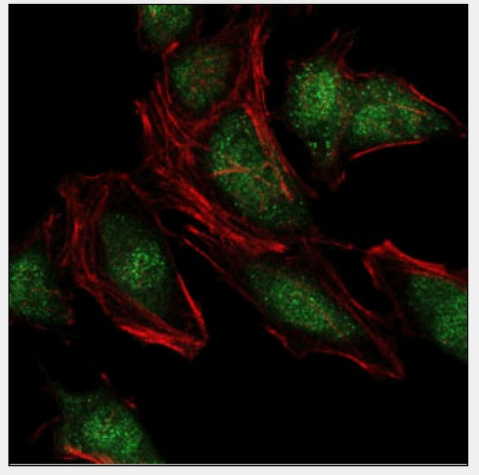
Western blot analysis using NEDD8 antibody against C6 (1) and HeLa (2) cell lysate.



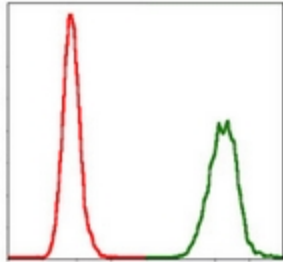
Immunohistochemical analysis of paraffin-embedded prostate cancer tissues using NEDD8 antibody with DAB staining.



Immunofluorescence analysis of HeLa cells using NEDD8 antibody (green). Red: Actin filaments have been labeled with Alexa Fluor-555 phalloidin.



Immunofluorescence of HeLa cells using NEDD8 antibody (green). Red: Actin filaments have been labeled with Alexa Fluor-555 phalloidin



Flow Cytometric analysis of HeLa cells using NEDD8 antibody (green) and negative control (red).