

Product datasheet for **AM06717PU-N**

Neurofilament (NEFL) Mouse Monoclonal Antibody [Clone ID: 2G10]

Product data:

| | |
|-------------------------|--|
| Product Type: | Primary Antibodies |
| Clone Name: | 2G10 |
| Applications: | ELISA, FC, IF, IHC, WB |
| Recommended Dilution: | Western Blot: 1/500 - 1/2000. Immunohistochemistry on paraffin sections: 1/200 - 1/1000. Immunofluorescence: 1/200 - 1/1000. Flow cytometry: 1/200 - 1/400. ELISA: 1/10000. |
| Reactivity: | Human |
| Host: | Mouse |
| Isotype: | IgG1 |
| Clonality: | Monoclonal |
| Immunogen: | Purified recombinant fragment of human NEFL expressed in E. Coli. |
| Specificity: | This antibody reacts to NEFL. |
| Formulation: | PBS State: Purified State: Liquid purified Ig fraction Stabilizer: 0,5% BSA Preservative: 0.05% sodium azide |
| Concentration: | lot specific |
| Conjugation: | Unconjugated |
| Storage: | Store the antibody undiluted at 2-8°C for one month or (in aliquots) at -20°C for longer. Avoid repeated freezing and thawing. |
| Stability: | Shelf life: one year from despatch. |
| Predicted Protein Size: | 62 kDa |
| Gene Name: | neurofilament, light polypeptide |
| Database Link: | Entrez Gene 4747 Human P07196 |



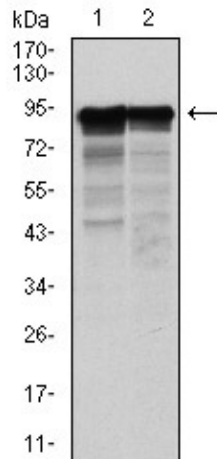
[View online »](#)

Background:

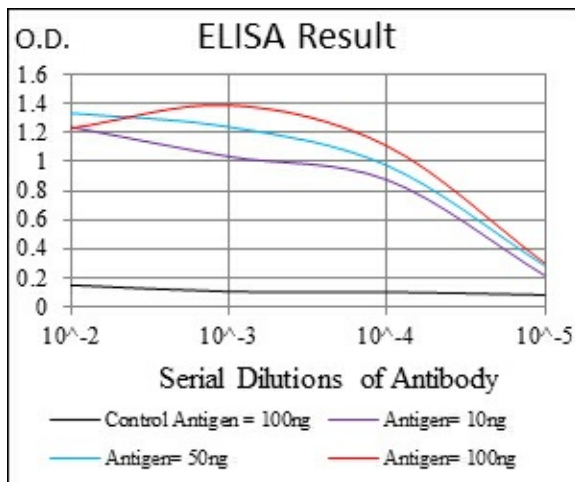
Neurofilaments are type IV intermediate filament heteropolymers composed of light, medium, and heavy chains. Neurofilaments comprise the axoskeleton and they functionally maintain the neuronal caliber. They may also play a role in intracellular transport to axons and dendrites. This gene encodes the light chain neurofilament protein. Mutations in this gene cause Charcot-Marie-Tooth disease types 1F (CMT1F) and 2E (CMT2E), disorders of the peripheral nervous system that are characterized by distinct neuropathies. A pseudogene has been identified on chromosome Y.

Synonyms:

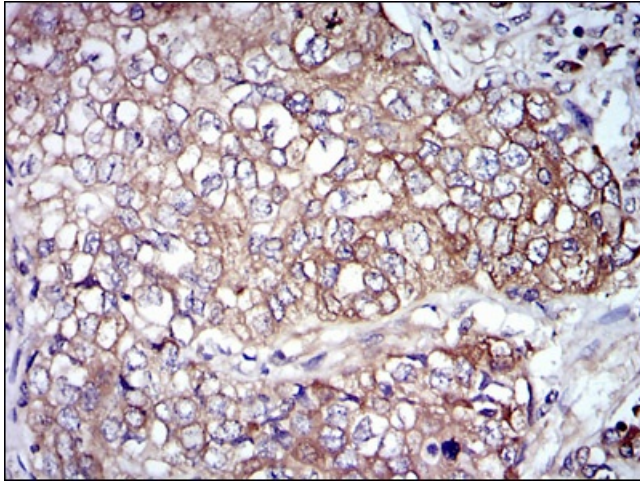
NF-L, NEFL, NF68, 68 kDa neurofilament protein

Product images:


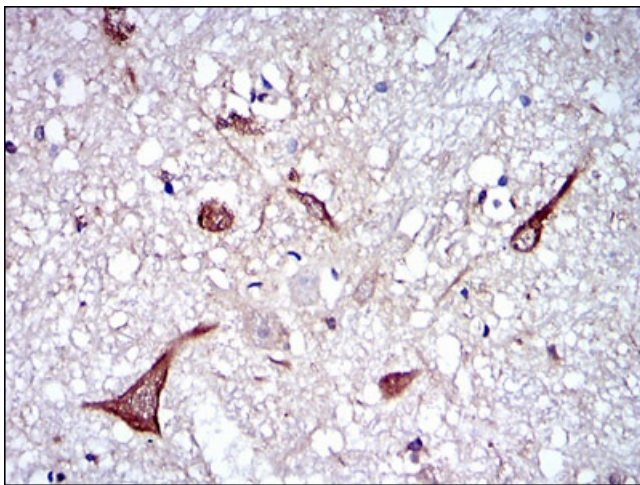
Western blot analysis using NEFL mouse mAb against HeLa (1) and Jurkat (2) cell lysate.



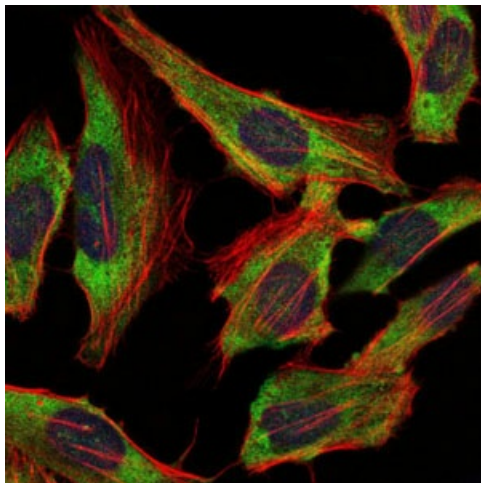
Red: Control Antigen (100ng) Purple: Antigen (10ng) Green: Antigen (50ng) Blue: Antigen (100ng)



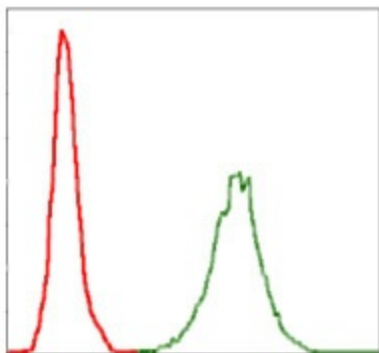
Immunohistochemical analysis of paraffin-embedded lung cancer tissues using NEFL mouse mAb with DAB staining.



Immunohistochemical analysis of paraffin-embedded brain tissues using NEFL mouse mAb with DAB staining.



Immunofluorescence analysis of HeLa cells using NEFL mouse mAb (green). Blue: DRAQ5 fluorescent DNA dye. Red: Actin filaments have been labeled with Alexa Fluor-555 phalloidin.



Flow cytometric analysis of Jurkat cells using NEFL mouse mAb (green) and negative control (red).