

## Product datasheet for **AM06716PU-N**

### CYP1A1 Mouse Monoclonal Antibody [Clone ID: 6G5]

#### Product data:

Product Type:	Primary Antibodies
Clone Name:	6G5
Applications:	ELISA, IHC, WB
Recommended Dilution:	<b>ELISA:</b> 1/10000. <b>Western Blot:</b> 1/500-1/2000. <b>Immunohistochemistry on Paraffin Sections:</b> 1/200-1/1000.
Reactivity:	Human
Host:	Mouse
Isotype:	IgG1
Clonality:	Monoclonal
Immunogen:	Purified recombinant fragment of Human CYP1A1 expressed in E. Coli.
Specificity:	This antibody recognizes Human CYP1A1. Other species not tested.
Formulation:	PBS State: Purified State: Liquid purified Ig fraction Stabilizer: 0.5% BSA Preservative: 0.05% Sodium Azide
Concentration:	lot specific
Conjugation:	Unconjugated
Storage:	Store undiluted at 2-8°C for one month or (in aliquots) at -20°C for longer. Avoid repeated freezing and thawing.
Stability:	Shelf life: one year from despatch.
Predicted Protein Size:	58 kDa
Gene Name:	cytochrome P450 family 1 subfamily A member 1
Database Link:	<a href="#">Entrez Gene 1543 Human P04798</a>



[View online »](#)

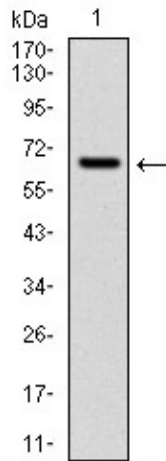
**Background:**

This gene, CYP1A1, encodes a member of the cytochrome P450 superfamily of enzymes. The cytochrome P450 proteins are monooxygenases which catalyze many reactions involved in drug metabolism and synthesis of cholesterol, steroids and other lipids. This protein localizes to the endoplasmic reticulum and its expression is induced by some polycyclic aromatic hydrocarbons (PAHs), some of which are found in cigarette smoke. The enzyme's endogenous substrate is unknown; however, it is able to metabolize some PAHs to carcinogenic intermediates. The gene has been associated with lung cancer risk. A related family member, CYP1A2, is located approximately 25 kb away from CYP1A1 on chromosome 15.

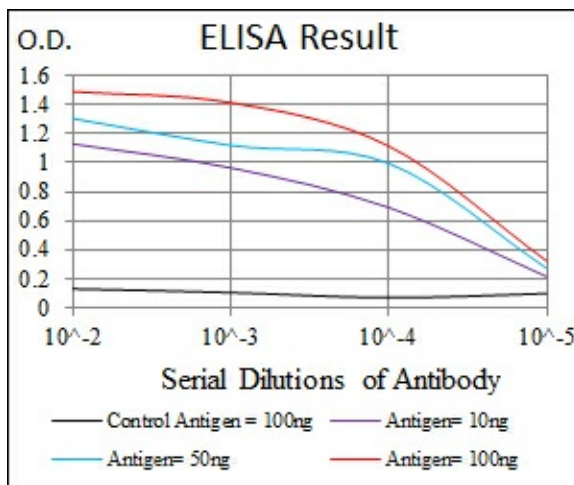
**Synonyms:**

Cytochrome P450 1A1, Cytochrome P450-P1, Cytochrome P450 form 6, Cytochrome P450-C

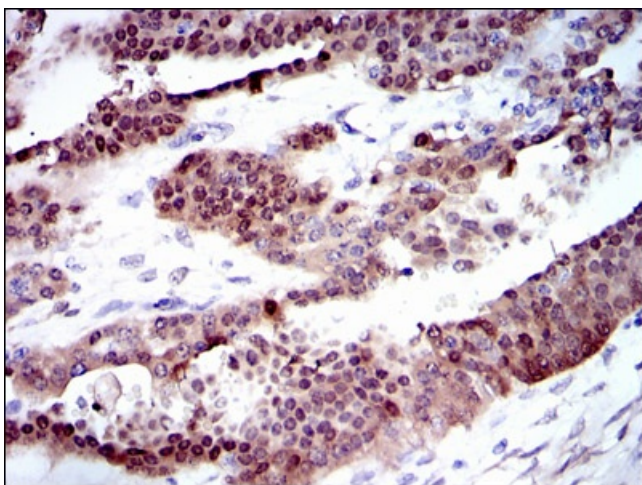
**Product images:**



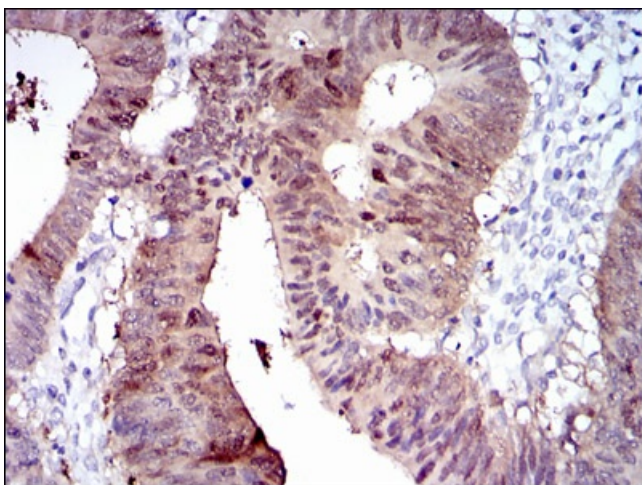
Western blot analysis using CYP1A1 mAb against human CYP1A1 (AA: 203-461) recombinant protein. (Expected MW is 60 kDa)



Red: Control Antigen (100ng) Purple: Antigen (10ng) Green: Antigen (50ng) Blue: Antigen (100ng)



Immunohistochemical analysis of paraffin-embedded ovarian cancer tissues using CYP1A1 mouse mAb with DAB staining.



Immunohistochemical analysis of paraffin-embedded rectum cancer tissues using CYP1A1 mouse mAb with DAB staining.