

Product datasheet for **AM06714PU-N**

Neurofilament (NEFL) Mouse Monoclonal Antibody [Clone ID: 1H3]

Product data:

Product Type:	Primary Antibodies
Clone Name:	1H3
Applications:	ELISA, FC, IF, IHC, WB
Recommended Dilution:	Western Blot: 1/500 - 1/2000. Immunohistochemistry on paraffin sections: 1/200 - 1/1000. Immunofluorescence: 1/200 - 1/1000. Flow cytometry: 1/200 - 1/400. ELISA: 1/10000.
Reactivity:	Human
Host:	Mouse
Isotype:	IgG1
Clonality:	Monoclonal
Immunogen:	Purified recombinant fragment of human NEFL expressed in E. Coli.
Specificity:	This antibody reacts to NEFL.
Formulation:	PBS State: Purified State: Liquid purified Ig fraction Stabilizer: 0,5% BSA Preservative: 0.05% sodium azide
Concentration:	lot specific
Conjugation:	Unconjugated
Storage:	Store the antibody undiluted at 2-8°C for one month or (in aliquots) at -20°C for longer. Avoid repeated freezing and thawing.
Stability:	Shelf life: one year from despatch.
Predicted Protein Size:	62 kDa
Gene Name:	neurofilament, light polypeptide
Database Link:	Entrez Gene 4747 Human P07196



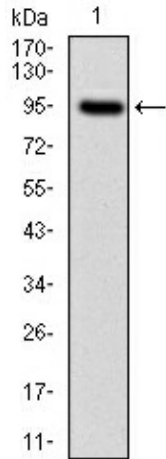
[View online »](#)

Background:

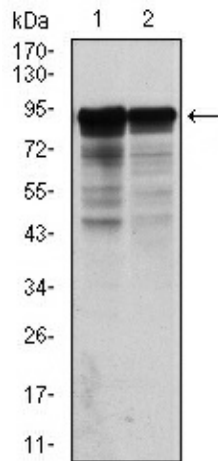
Neurofilaments are type IV intermediate filament heteropolymers composed of light, medium, and heavy chains. Neurofilaments comprise the axoskeleton and they functionally maintain the neuronal caliber. They may also play a role in intracellular transport to axons and dendrites. This gene encodes the light chain neurofilament protein. Mutations in this gene cause Charcot-Marie-Tooth disease types 1F (CMT1F) and 2E (CMT2E), disorders of the peripheral nervous system that are characterized by distinct neuropathies. A pseudogene has been identified on chromosome Y.

Synonyms:

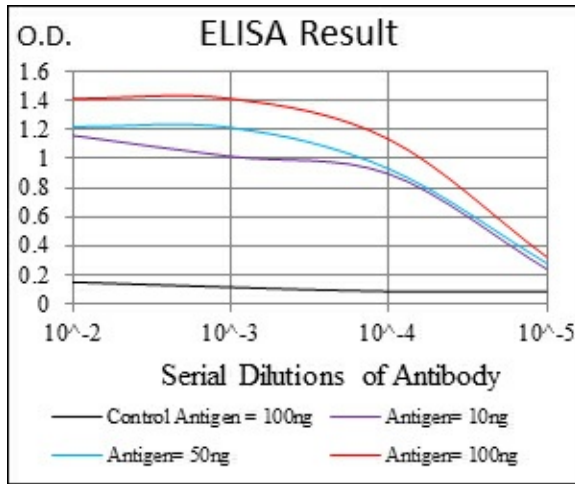
NF-L, NEFL, NF68, 68 kDa neurofilament protein

Product images:


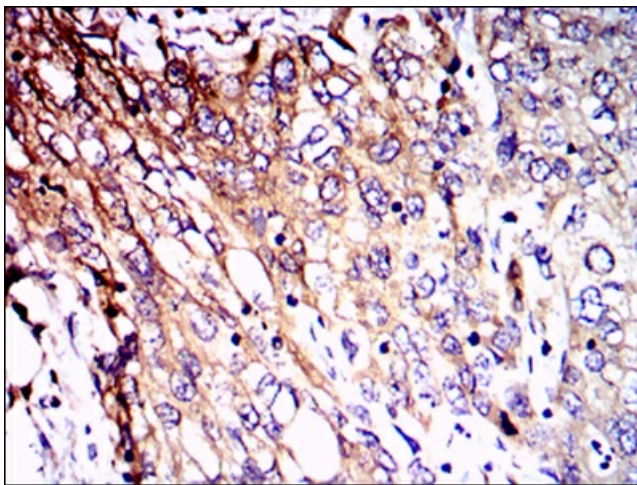
Western blot analysis using NEFL mAb against human NEFL (AA: 422-543) recombinant protein. (Expected MW is 62 kDa)



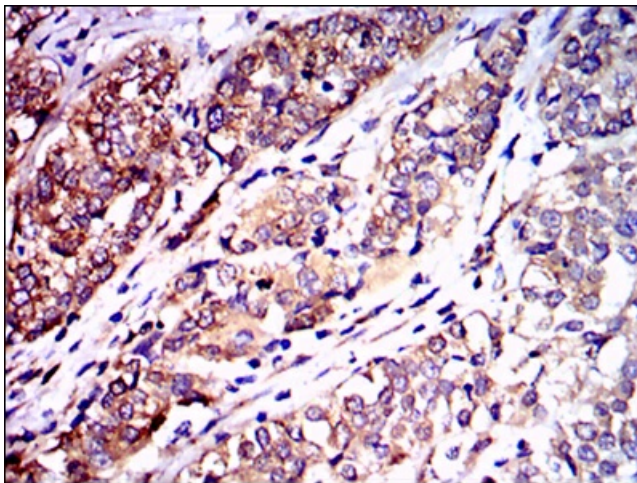
Western blot analysis using NEFL mouse mAb against Hela (1) and Jurkat (2) cell lysate.



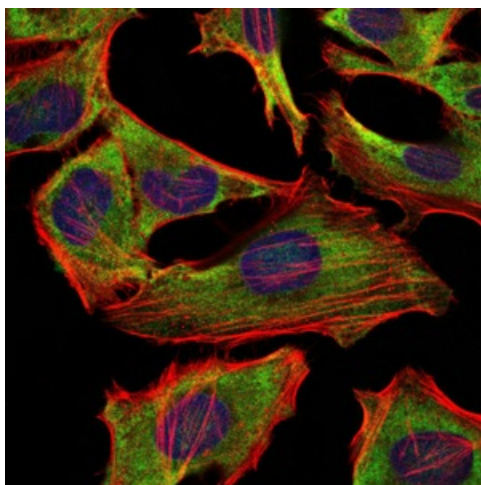
Red: Control Antigen (100ng) Purple: Antigen (10ng) Green: Antigen (50ng) Blue: Antigen (100ng)



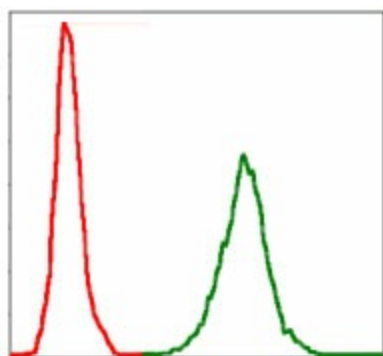
Immunohistochemical analysis of paraffin-embedded lung cancer tissues using NEFL mouse mAb with DAB staining.



Immunohistochemical analysis of paraffin-embedded bladder cancer tissues using NEFL mouse mAb with DAB staining.



Immunofluorescence analysis of HeLa cells using NEFL mouse mAb (green). Blue: DRAQ5 fluorescent DNA dye. Red: Actin filaments have been labeled with Alexa Fluor-555 phalloidin.



Flow cytometric analysis of Jurkat cells using NEFL mouse mAb (green) and negative control (red).