

Product datasheet for **AM06713PU-N**

PPP2R4 (PTPA) Mouse Monoclonal Antibody [Clone ID: 4D9]

Product data:

Product Type:	Primary Antibodies
Clone Name:	4D9
Applications:	ELISA, FC, IF, IHC, WB
Recommended Dilution:	Western Blot: 1/500 - 1/2000. Immunohistochemistry on paraffin sections 1/200 - 1/1000. Immunofluorescence: 1/200 - 1/1000. Flow cytometry: 1/200 - 1/400. ELISA: 1/10000.
Reactivity:	Human
Host:	Mouse
Isotype:	IgG1
Clonality:	Monoclonal
Immunogen:	Purified recombinant fragment of human PPP2R4 expressed in E. Coli.
Specificity:	This antibody reacts to PPP2R4.
Formulation:	PBS State: Purified State: Liquid purified Ig fraction Stabilizer: 0.5% BSA Preservative: 0.05% sodium azide
Concentration:	lot specific
Conjugation:	Unconjugated
Storage:	Store the antibody undiluted at 2-8°C for one month or (in aliquots) at -20°C for longer. Avoid repeated freezing and thawing.
Stability:	Shelf life: one year from despatch.
Predicted Protein Size:	41 kDa
Gene Name:	protein phosphatase 2 phosphatase activator
Database Link:	Entrez Gene 5524 Human Q15257



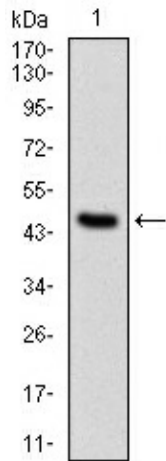
[View online »](#)

Background:

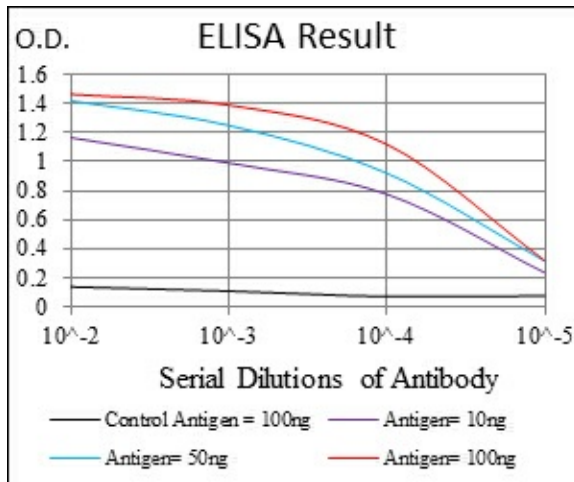
Protein phosphatase 2A is one of the four major Ser/Thr phosphatases and is implicated in the negative control of cell growth and division. Protein phosphatase 2A holoenzymes are heterotrimeric proteins composed of a structural subunit A, a catalytic subunit C, and a regulatory subunit B. The regulatory subunit is encoded by a diverse set of genes that have been grouped into the B/PR55, B'/PR61, and B''/PR72 families. These different regulatory subunits confer distinct enzymatic specificities and intracellular localizations to the holoenzyme. The product of this gene belongs to the B' family. This gene encodes a specific phosphotyrosyl phosphatase activator of the dimeric form of protein phosphatase 2A. Alternative splicing results in multiple transcript variants encoding different isoforms.

Synonyms:

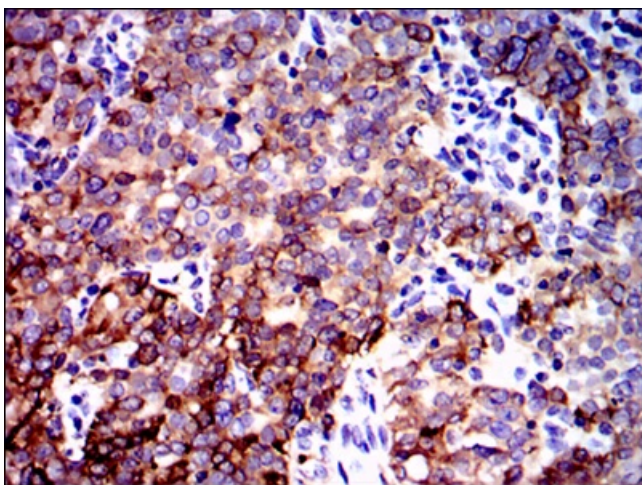
PP2A subunit B' PR53 isoform, Phosphotyrosyl phosphatase activator

Product images:


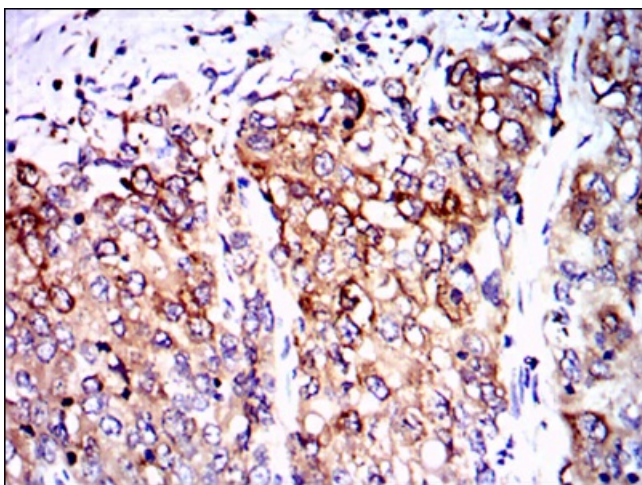
Western blot analysis using PPP2R4 mAb against human PPP2R4 (AA: 1-154) recombinant protein. (Expected MW is 41 kDa)



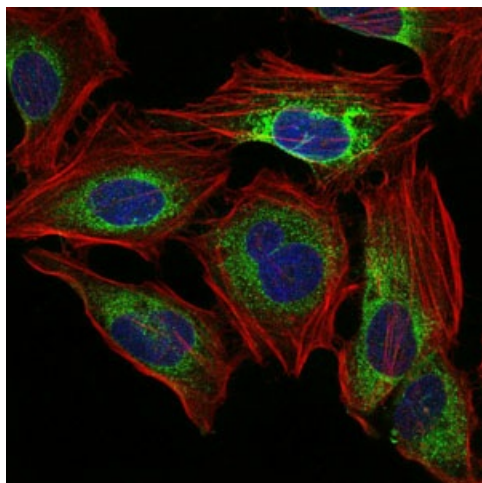
Red: Control Antigen (100ng) Purple: Antigen (10ng) Green: Antigen (50ng) Blue: Antigen (100ng)



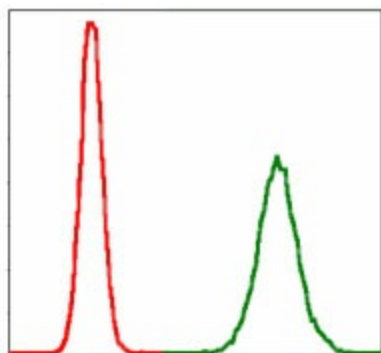
Immunohistochemical analysis of paraffin-embedded cervical cancer tissues using PPP2R4 mouse mAb with DAB staining.



Immunohistochemical analysis of paraffin-embedded lung cancer tissues using PPP2R4 mouse mAb with DAB staining.



Immunofluorescence analysis of HeLa cells using PPP2R4 mouse mAb (green). Blue: DRAQ5 fluorescent DNA dye. Red: Actin filaments have been labeled with Alexa Fluor-555 phalloidin.



Flow cytometric analysis of MCF-7 cells using PPP2R4 mouse mAb (green) and negative control (red).