

Product datasheet for **AM06712SU-N**

PPP1A (PPP1CA) Mouse Monoclonal Antibody [Clone ID: 5E9]

Product data:

Product Type:	Primary Antibodies
Clone Name:	5E9
Applications:	ELISA, WB
Recommended Dilution:	Western Blot: 1/500 - 1/2000. ELISA: 1/10000.
Reactivity:	Human
Host:	Mouse
Isotype:	IgG1
Clonality:	Monoclonal
Immunogen:	Purified recombinant fragment of human PPP1CA expressed in E. Coli.
Specificity:	This antibody reacts to PPP1CA.
Formulation:	State: Ascites State: Ascitic fluid containing 0.03% sodium azide.
Conjugation:	Unconjugated
Storage:	Store the antibody undiluted at 2-8°C for one month or (in aliquots) at -20°C for longer. Avoid repeated freezing and thawing.
Stability:	Shelf life: one year from despatch.
Predicted Protein Size:	38 kDa
Gene Name:	protein phosphatase 1 catalytic subunit alpha
Database Link:	Entrez Gene 5499 Human P62136



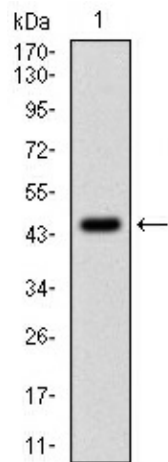
[View online »](#)

Background:

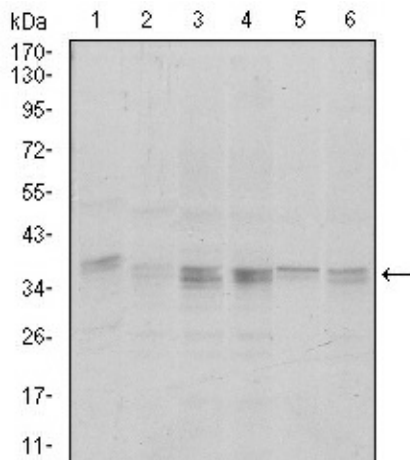
The protein encoded by this gene is one of the three catalytic subunits of protein phosphatase 1 (PP1). PP1 is a serine/threonine specific protein phosphatase known to be involved in the regulation of a variety of cellular processes, such as cell division, glycogen metabolism, muscle contractility, protein synthesis, and HIV-1 viral transcription. Increased PP1 activity has been observed in the end stage of heart failure. Studies in both human and mice suggest that PP1 is an important regulator of cardiac function. Mouse studies also suggest that PP1 functions as a suppressor of learning and memory. Three alternatively spliced transcript variants encoding different isoforms have been found for this gene.

Synonyms:

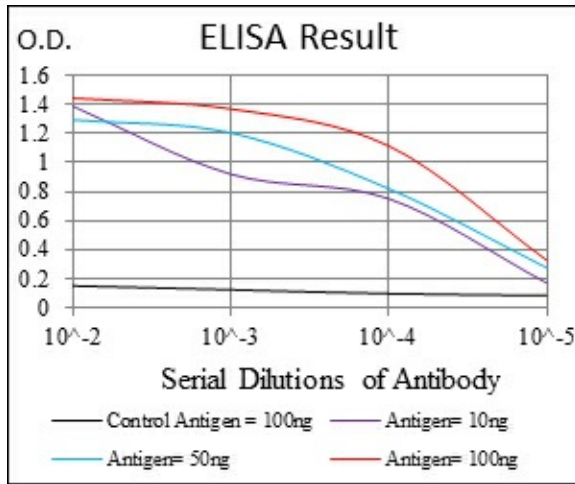
PPP1A, PP-1A

Product images:


Western blot analysis using PPP1CA mAb against human PPP1CA (AA: 174-330) recombinant protein. (Expected MW is 38 kDa)



Western blot analysis using PPP1CA mouse mAb against HeLa (1), HepG2 (2), MCF-7 (3), Jurkat (4) and A549 (5) cell lysate.



Red: Control Antigen (100ng) Purple: Antigen (10ng) Green: Antigen (50ng) Blue: Antigen (100ng)