

Product datasheet for **AM06711SU-N**

EHHADH Mouse Monoclonal Antibody [Clone ID: 2D6]

Product data:

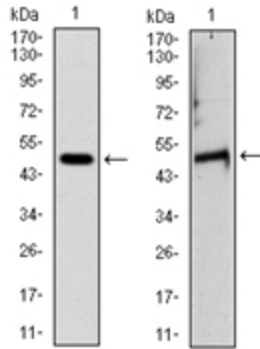
Product Type:	Primary Antibodies
Clone Name:	2D6
Applications:	ELISA, FC, IF, IHC, WB
Recommended Dilution:	ELISA: 1/10000. Western Blot: 1/500 - 1/2000. Flow Cytometry: 1/200 - 1/400. Immunofluorescence: 1/200 - 1/1000. Immunohistochemistry on Paraffin Sections: 1/200 - 1/1000.
Reactivity:	Human, Rat
Host:	Mouse
Isotype:	IgG2b
Clonality:	Monoclonal
Immunogen:	Purified recombinant fragment of Human TUBA8 expressed in E. Coli.
Specificity:	This antibody recognizes TUBA8 / TUBAL2
Formulation:	State: Ascites State: Ascitic fluid containing 0.03% Sodium Azide.
Conjugation:	Unconjugated
Storage:	Store the antibody undiluted at 2-8°C for one month or (in aliquots) at -20°C for longer. Avoid repeated freezing and thawing.
Stability:	Shelf life: one year from despatch.
Predicted Protein Size:	50 kDa
Gene Name:	enoyl-CoA, hydratase/3-hydroxyacyl CoA dehydrogenase
Database Link:	Entrez Gene 1962 Human Q08426
Background:	This gene encodes a member of the alpha tubulin protein family. Alpha tubulins are one of two core protein families (alpha and beta tubulins) that heterodimerize and assemble to form microtubules. Mutations in this gene are associated with polymicrogyria and optic nerve hypoplasia. Alternate splicing results in multiple transcript variants.



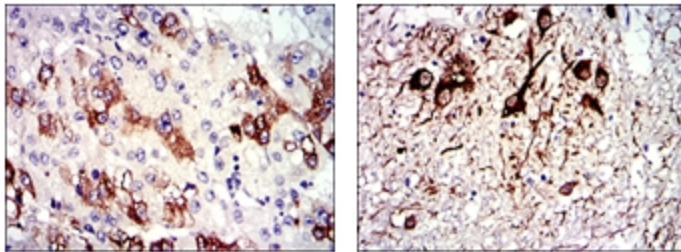
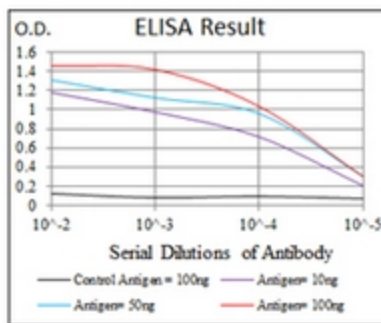
[View online »](#)

Synonyms: Tubulin alpha-8 chain, Alpha-tubulin 8, Tubulin alpha chain-like 2

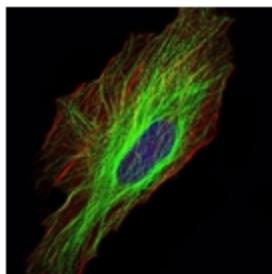
Product images:



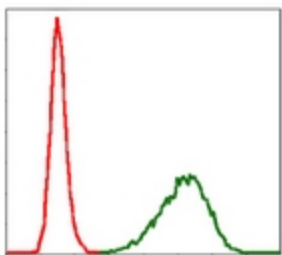
Western blot analysis using TUBA8 antibody Cat.-No AM06711SU-N against Human TUBA8 (AA: 294-449) recombinant protein (left) and Rat heart (right) tissue lysate. Expected MW is 50 kDa



Immunohistochemical analysis of paraffin-embedded liver cancer tissues (left) and medulla oblongata tissues (right) using TUBA8 antibody Cat.-No AM06711SU-N with DAB staining.



Immunofluorescence analysis of HeLa cells using TUBA8 antibody Cat.-No AM06711SU-N (green). Blue: DRAQ5 fluorescent DNA dye. Red: Actin filaments have been labeled with Alexa Fluor-555 phalloidin.



Flow Cytometric analysis of NIH/3T3 cells using TUBA8 antibody Cat.-No AM06711SU-N (green) and negative control (red).