

## Product datasheet for **AM06709SU-N**

### MSH6 Mouse Monoclonal Antibody [Clone ID: 3E1]

#### Product data:

Product Type:	Primary Antibodies
Clone Name:	3E1
Applications:	ELISA, FC, IF, IHC, WB
Recommended Dilution:	<b>Western Blot:</b> 1/500 - 1/2000. <b>Immunohistochemistry on paraffin sections:</b> 1/200 - 1/1000. <b>Immunofluorescence:</b> 1/200 - 1/1000. <b>Flow cytometry:</b> 1/200 - 1/400. <b>ELISA:</b> 1/10000.
Reactivity:	Human
Host:	Mouse
Isotype:	IgG1
Clonality:	Monoclonal
Immunogen:	Purified recombinant fragment of human MSH6 expressed in E. Coli.
Specificity:	This antibody reacts to FYN.
Formulation:	State: Ascites State: Ascitic fluid containing 0.03% sodium azide.
Conjugation:	Unconjugated
Storage:	Store the antibody undiluted at 2-8°C for one month or (in aliquots) at -20°C for longer. Avoid repeated freezing and thawing.
Stability:	Shelf life: one year from despatch.
Predicted Protein Size:	61 kDa
Gene Name:	mutS homolog 6
Database Link:	<a href="#">Entrez Gene 2956 Human P52701</a>



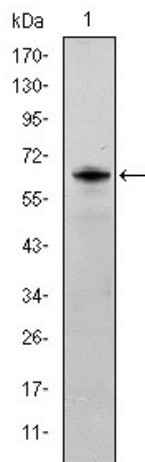
[View online »](#)

**Background:**

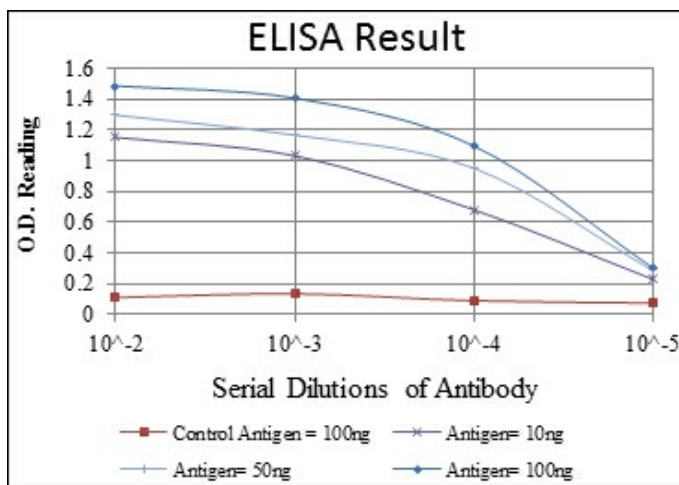
This gene encodes a protein similar to the MutS protein. In *E. coli*, the MutS protein helps in the recognition of mismatched nucleotides, prior to their repair. A highly conserved region of approximately 150 aa, called the Walker-A adenine nucleotide binding motif, exists in MutS homologs. The encoded protein of this gene combines with MSH2 to form a mismatch recognition complex that functions as a bidirectional molecular switch that exchanges ADP and ATP as DNA mismatches are bound and dissociated. Mutations in this gene have been identified in individuals with hereditary nonpolyposis colon cancer (HNPCC) and endometrial cancer.

**Synonyms:**

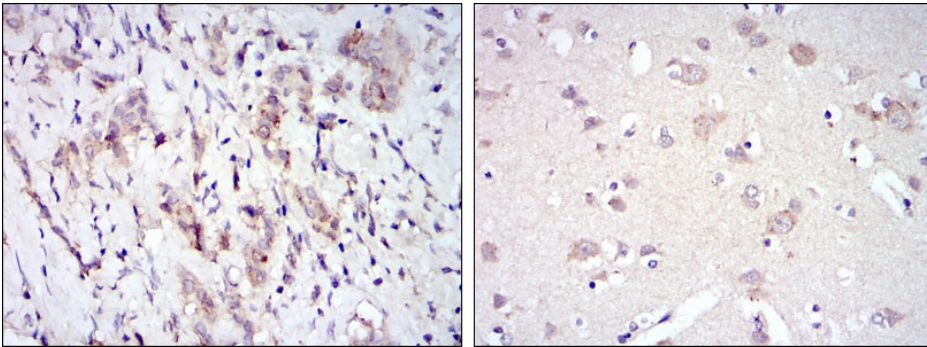
DNA mismatch repair protein Msh6, GTBP

**Product images:**


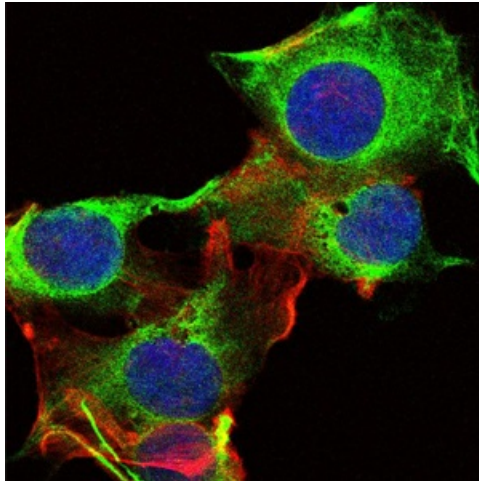
Western blot analysis using FYN mAb against human FYN (AA: 7-176) recombinant protein. (Expected MW is 44.3 kDa)



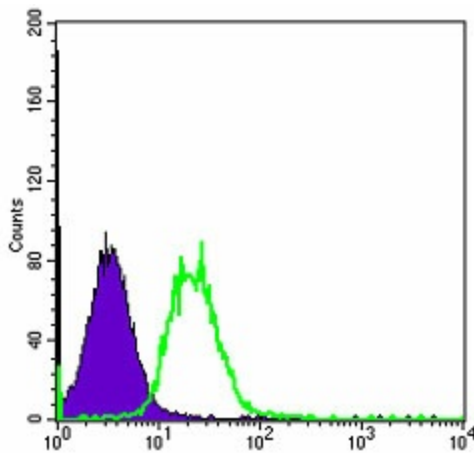
Red: Control Antigen (100ng) Purple: Antigen (10ng) Green: Antigen (50ng) Blue: Antigen (100ng)



Immunohistochemical analysis of paraffin-embedded breast cancer tissues (left) and brain tissues (right) using FYN mouse mAb with DAB staining.



Immunofluorescence analysis of U251 cells using FYN mouse mAb (green). Blue: DRAQ5 fluorescent DNA dye. Red: Actin filaments have been labeled with Alexa Fluor-555 phalloidin.



Flow cytometric analysis of Hela cells using FYN mouse mAb (green) and negative control (purple).