

## Product datasheet for **AM06704SU-N**

### SKP1 Mouse Monoclonal Antibody [Clone ID: 4E11]

#### Product data:

Product Type:	Primary Antibodies
Clone Name:	4E11
Applications:	ELISA, FC, IF, IHC, WB
Recommended Dilution:	<b>Western Blot:</b> 1/500 - 1/2000. <b>Immunohistochemistry on paraffin sections:</b> 1/200 - 1/1000. <b>Immunofluorescence:</b> 1/200 - 1/1000. <b>Flow cytometry:</b> 1/200 - 1/400. <b>ELISA:</b> 1/10000.
Reactivity:	Human
Host:	Mouse
Isotype:	IgG1
Clonality:	Monoclonal
Immunogen:	Purified recombinant fragment of human SKP1 expressed in E. Coli.
Specificity:	This antibody reacts to SKP1.
Formulation:	State: Ascites State: Ascitic fluid containing 0.03% sodium azide.
Conjugation:	Unconjugated
Storage:	Store the antibody undiluted at 2-8°C for one month or (in aliquots) at -20°C for longer. Avoid repeated freezing and thawing.
Stability:	Shelf life: one year from despatch.
Predicted Protein Size:	19 kDa
Gene Name:	S-phase kinase-associated protein 1
Database Link:	<a href="#">Entrez Gene 6500 Human P63208</a>



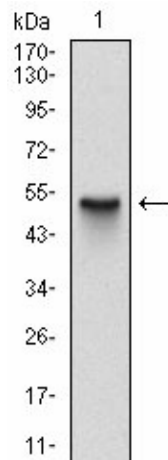
[View online »](#)

**Background:**

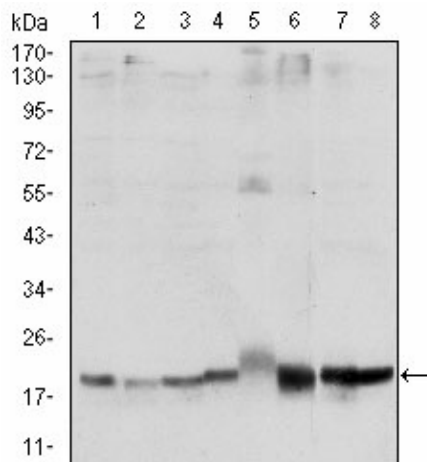
This gene encodes a component of SCF complexes, which are composed of this protein, cullin 1, a ring-box protein, and one member of the F-box family of proteins. This protein binds directly to the F-box motif found in F-box proteins. SCF complexes are involved in the regulated ubiquitination of specific protein substrates, which targets them for degradation by the proteasome. Specific F-box proteins recognize different target protein(s), and many specific SCF substrates have been identified including regulators of cell cycle progression and development. Studies have also characterized the protein as an RNA polymerase II elongation factor. Alternative splicing of this gene results in two transcript variants. A related pseudogene has been identified on chromosome 7.

**Synonyms:**

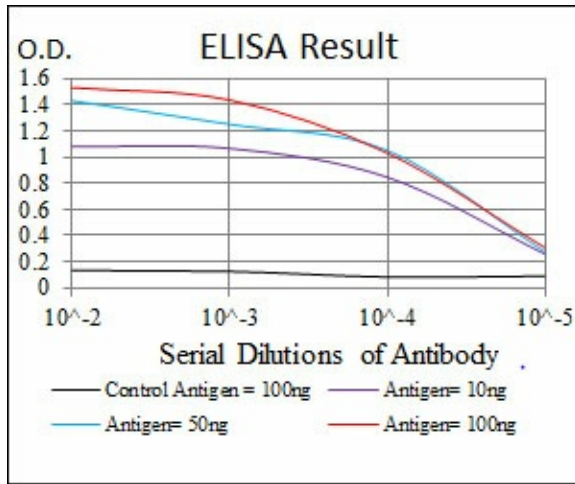
SKP1A, p19skp1, p19A, OCP-2, OCP-II, EMC19, TCEB1L

**Product images:**


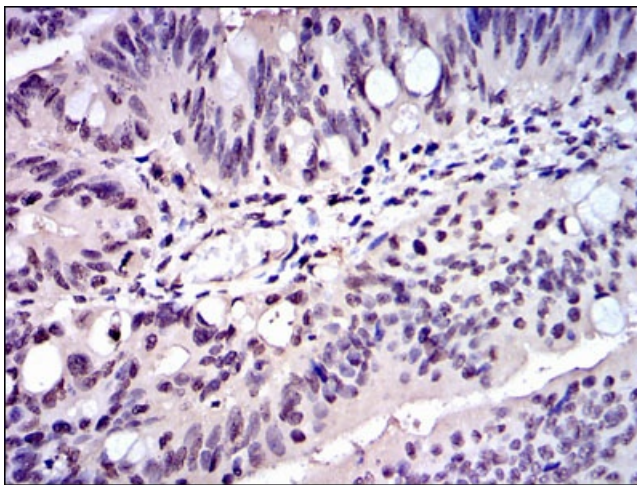
Western blot analysis using SKP1 mAb against human SKP1 (AA: 1-160) recombinant protein. (Expected MW is 43.5 kDa)



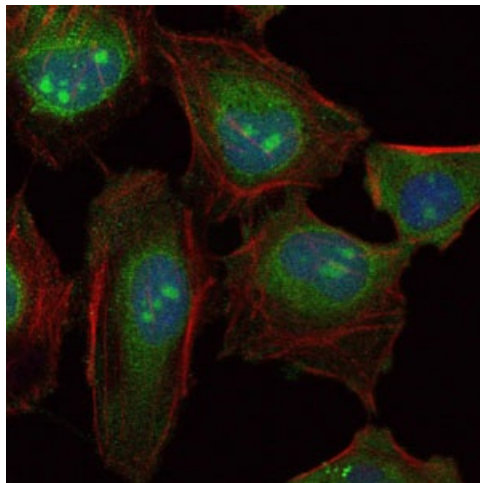
Western blot analysis using SKP1 mouse mAb against HeLa (1), NIH/3T3 (2), A431 (3), RAJI (4), PC-12 (5), Cos7 (6), MCF-7 (7) and HepG2 (8) cell lysate.



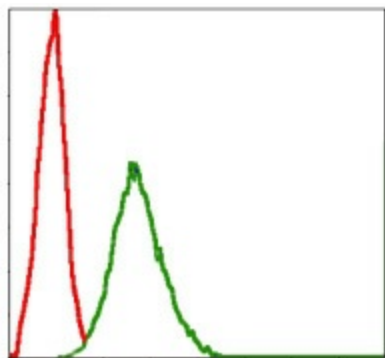
Red: Control Antigen (100ng) Purple: Antigen (10ng)  
 Green: Antigen (50ng) Blue: Antigen (100ng)



Immunohistochemical analysis of paraffin-embedded rectum cancer tissues using SKP1 mouse mAb with DAB staining.



Immunofluorescence analysis of HeLa cells using SKP1 mouse mAb (green). Blue: DRAQ5 fluorescent DNA dye. Red: Actin filaments have been labeled with Alexa Fluor-555 phalloidin.



Flow cytometric analysis of NIH/3T3 cells using SKP1 mouse mAb (green) and negative control (red).