

## Product datasheet for **AM06701SU-N**

### MEK7 (MAP2K7) Mouse Monoclonal Antibody [Clone ID: 4E5]

#### Product data:

Product Type:	Primary Antibodies
Clone Name:	4E5
Applications:	ELISA, FC, IF, IHC, WB
Recommended Dilution:	<b>Western Blot:</b> 1/500 - 1/2000. <b>Immunohistochemistry on paraffin sections:</b> 1/200 - 1/1000. <b>Immunofluorescence:</b> 1/200 - 1/1000. <b>Flow cytometry:</b> 1/200 - 1/400. <b>ELISA:</b> 1/10000.
Reactivity:	Human
Host:	Mouse
Isotype:	IgG1
Clonality:	Monoclonal
Immunogen:	Purified recombinant fragment of human MAP2K7 expressed in E. Coli.
Specificity:	This antibody reacts to MAP2K7.
Formulation:	State: Ascites State: Ascitic fluid containing 0.03% sodium azide.
Conjugation:	Unconjugated
Storage:	Store the antibody undiluted at 2-8°C for one month or (in aliquots) at -20°C for longer. Avoid repeated freezing and thawing.
Stability:	Shelf life: one year from despatch.
Predicted Protein Size:	48 kDa
Gene Name:	mitogen-activated protein kinase kinase 7
Database Link:	<a href="#">Entrez Gene 5609 Human</a> <a href="#">O14733</a>



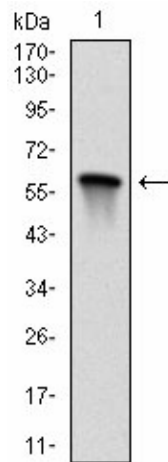
[View online »](#)

**Background:**

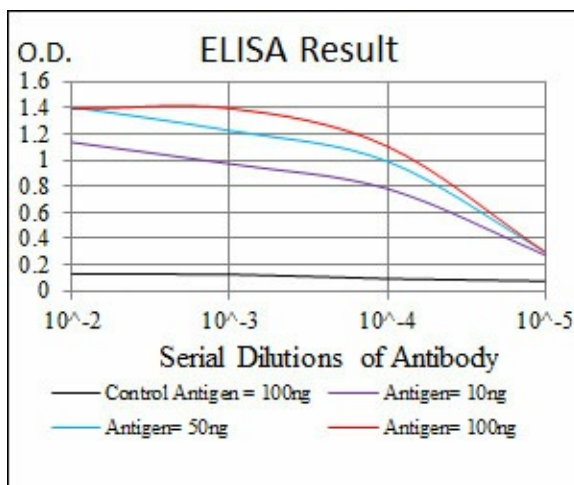
The protein encoded by this gene is a dual specificity protein kinase that belongs to the MAP kinase kinase family. This kinase specifically activates MAPK8/JNK1 and MAPK9/JNK2, and this kinase itself is phosphorylated and activated by MAP kinase kinase kinases including MAP3K1/MEKK1, MAP3K2/MEKK2, MAP3K3/MEKK5, and MAP4K2/GCK. This kinase is involved in the signal transduction mediating the cell responses to proinflammatory cytokines, and environmental stresses. Multiple alternatively spliced transcript variants encoding distinct isoforms have been found, but only one transcript variant has been supported and defined.

**Synonyms:**

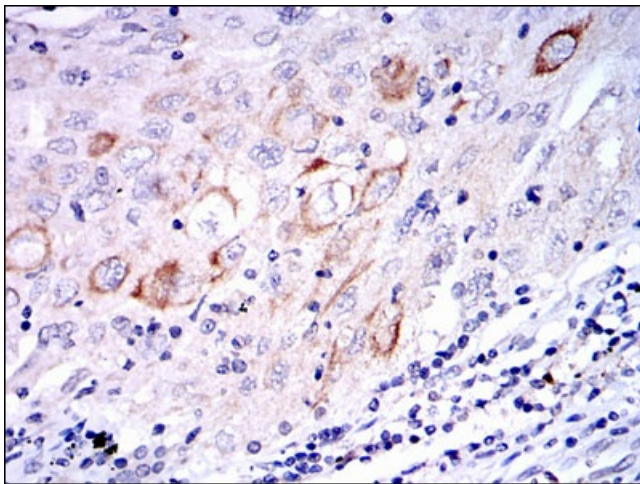
MAPK/ERK kinase 7, JNK-activating kinase 2, c-Jun N-terminal kinase kinase 2, MAPKK 7, NKK2, MEK7, MKK7, MAP kinase kinase 7

**Product images:**


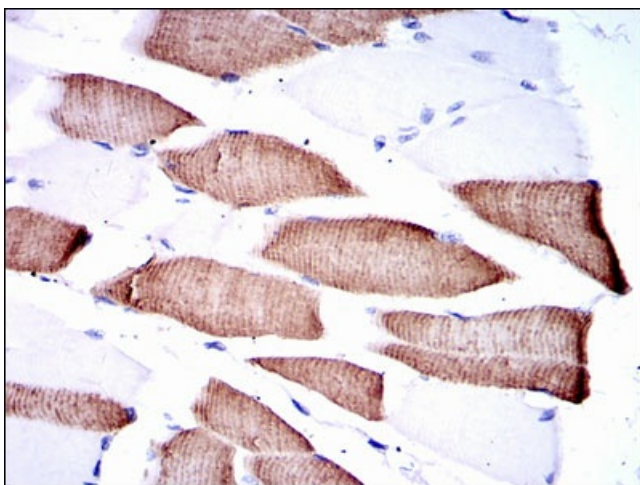
Western blot analysis using MAP2K7 mAb against human MAP2K7 (AA: 7-178) recombinant protein. (Expected MW is 45.1 kDa)



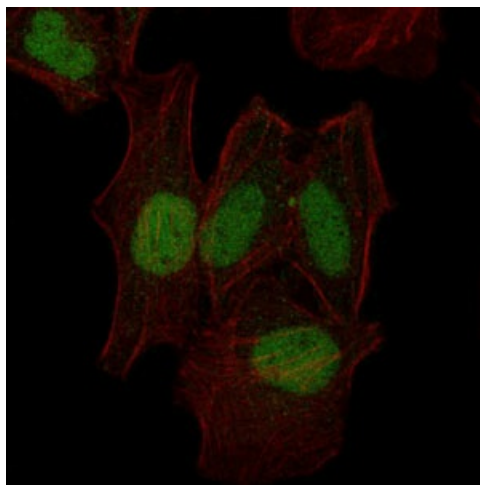
Red: Control Antigen (100ng) Purple: Antigen (10ng) Green: Antigen (50ng) Blue: Antigen (100ng)



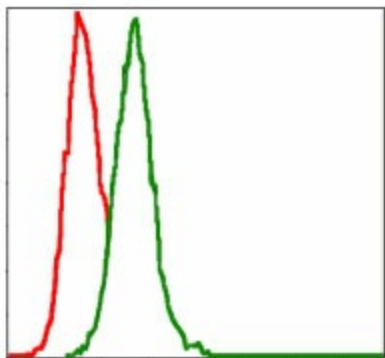
Immunohistochemical analysis of paraffin-embedded lung cancer tissues using MAP2K7 mouse mAb with DAB staining.



Immunohistochemical analysis of paraffin-embedded muscle tissues using MAP2K7 mouse mAb with DAB staining.



Immunofluorescence analysis of HeLa cells using MAP2K7 mouse mAb (green). Red: Actin filaments have been labeled with Alexa Fluor-555 phalloidin.



Flow cytometric analysis of HeLa cells using MAP2K7 mouse mAb (green) and negative control (red).