

Product datasheet for **AM06699SU-N**

MCM2 Mouse Monoclonal Antibody [Clone ID: 1E7]

Product data:

Product Type:	Primary Antibodies
Clone Name:	1E7
Applications:	ELISA, FC, IF, IHC, WB
Recommended Dilution:	Western Blot: 1/500 - 1/2000. Immunohistochemistry on paraffin sections: 1/200 - 1/1000. Immunofluorescence: 1/200 - 1/1000. Flow cytometry: 1/200 - 1/400. ELISA: 1/10000.
Reactivity:	Human
Host:	Mouse
Isotype:	IgG1
Clonality:	Monoclonal
Immunogen:	Purified recombinant fragment of human MCM2 expressed in E. Coli.
Specificity:	This antibody reacts to MCM2.
Formulation:	State: Ascites State: Ascitic fluid containing 0.03% sodium azide.
Conjugation:	Unconjugated
Storage:	Store the antibody undiluted at 2-8°C for one month or (in aliquots) at -20°C for longer. Avoid repeated freezing and thawing.
Stability:	Shelf life: one year from despatch.
Predicted Protein Size:	125 kDa
Gene Name:	minichromosome maintenance complex component 2
Database Link:	Entrez Gene 4171 Human P49736



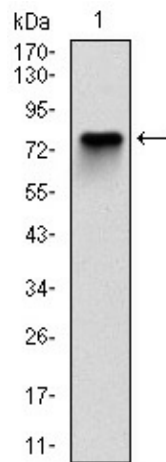
[View online »](#)

Background:

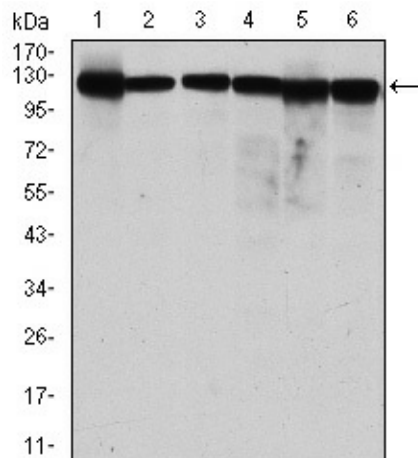
The protein encoded by this gene is one of the highly conserved mini-chromosome maintenance proteins (MCM) that are involved in the initiation of eukaryotic genome replication. The hexameric protein complex formed by MCM proteins is a key component of the pre-replication complex (pre_RC) and may be involved in the formation of replication forks and in the recruitment of other DNA replication related proteins. This protein forms a complex with MCM4, 6, and 7, and has been shown to regulate the helicase activity of the complex. This protein is phosphorylated, and thus regulated by, protein kinases CDC2 and CDC7.

Synonyms:

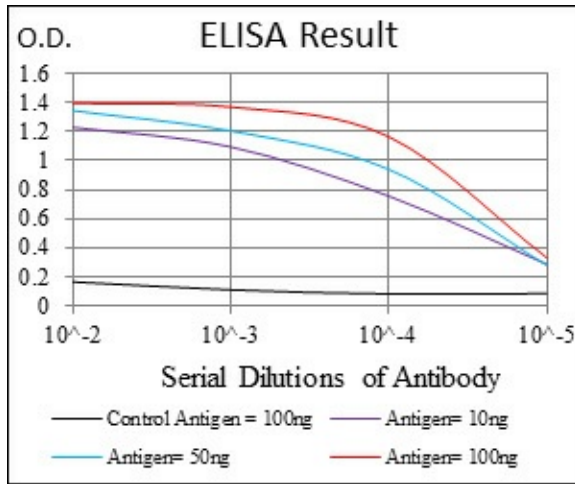
BM28, CCNL1, CDCL1, Nuclear protein BM28

Product images:


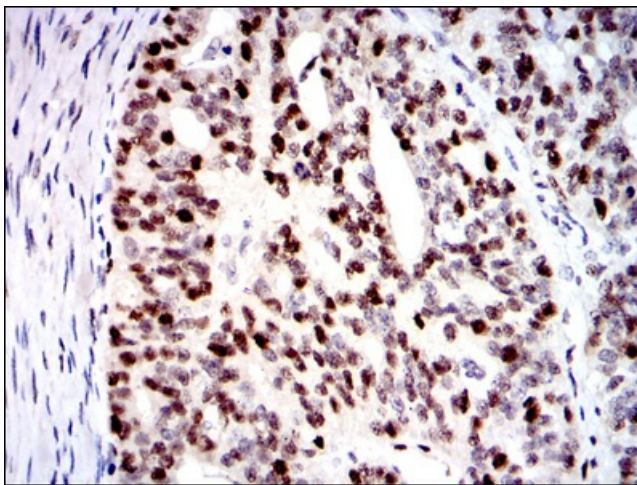
Western blot analysis using MCM2 mAb against human MCM2 (AA: 16-232) recombinant protein. (Expected MW is 50.4 kDa)



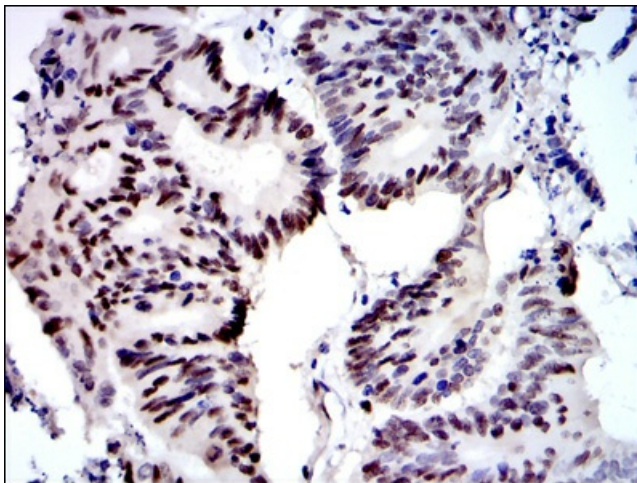
Western blot analysis using MCM2 mouse mAb against MCF-7 (1), HeLa (2), Jurkat (3), K562 (4), HEK293 (5) and HEPG2 (6) cell lysate.



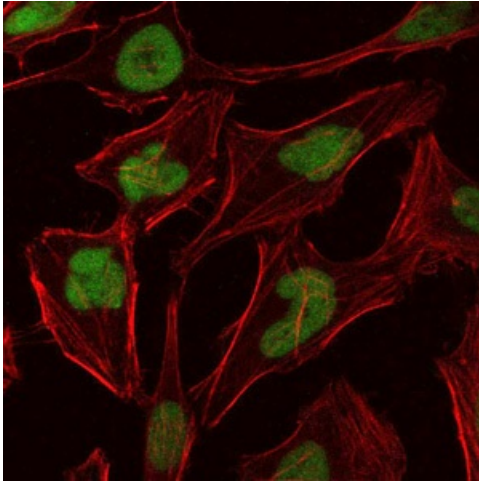
Red: Control Antigen (100ng) Purple: Antigen (10ng) Green: Antigen (50ng) Blue: Antigen (100ng)



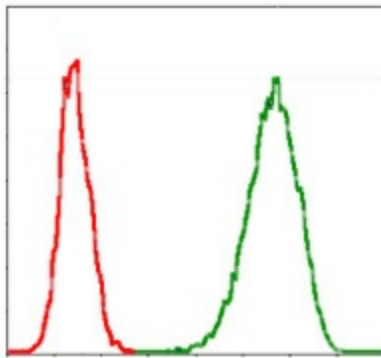
Immunohistochemical analysis of paraffin-embedded ovarian cancer tissues using MCM2 mouse mAb with DAB staining.



Immunohistochemical analysis of paraffin-embedded colon cancer tissues using MCM2 mouse mAb with DAB staining.



Immunofluorescence analysis of HeLa cells using MCM2 mouse mAb (green). Blue: DRAQ5 fluorescent DNA dye. Red: Actin filaments have been labeled with Alexa Fluor-555 phalloidin.



Flow cytometric analysis of Jurkat cells using MCM2 mouse mAb (green) and negative control (red).