

## Product datasheet for **AM06695SU-N**

### **Bmi1 (COMMD3-BMI1) Mouse Monoclonal Antibody [Clone ID: 3E3]**

#### Product data:

Product Type:	Primary Antibodies
Clone Name:	3E3
Applications:	ELISA, FC, IF, IHC, WB
Recommended Dilution:	<b>Western Blot:</b> 1/500 - 1/2000. <b>Immunohistochemistry on paraffin sections:</b> 1/200 - 1/1000. <b>Immunofluorescence:</b> 1/200 - 1/1000. <b>Flow cytometry:</b> 1/200 - 1/400. <b>ELISA:</b> 1/10000.
Reactivity:	Human
Host:	Mouse
Isotype:	IgG1
Clonality:	Monoclonal
Immunogen:	Purified recombinant fragment of human BMI1 expressed in E. Coli.
Specificity:	This antibody reacts to BMI1.
Formulation:	State: Ascites State: Ascitic fluid containing 0.03% sodium azide.
Conjugation:	Unconjugated
Storage:	Store the antibody undiluted at 2-8°C for one month or (in aliquots) at -20°C for longer. Avoid repeated freezing and thawing.
Stability:	Shelf life: one year from despatch.
Predicted Protein Size:	37 kDa
Gene Name:	COMMD3-BMI1 readthrough
Database Link:	<a href="#">Entrez Gene 100532731 Human P35226</a>



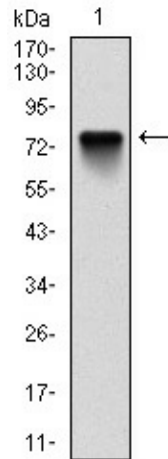
[View online »](#)

**Background:**

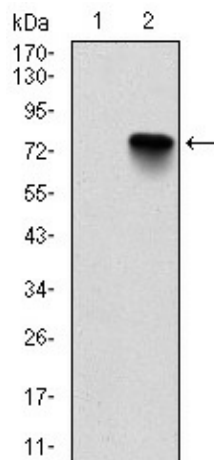
Component of the Polycomb group (PcG) multiprotein PRC1 complex, a complex required to maintain the transcriptionally repressive state of many genes, including Hox genes, throughout development. PcG PRC1 complex acts via chromatin remodeling and modification of histones; it mediates monoubiquitination of histone H2A 'Lys-119', rendering chromatin heritably changed in its expressibility. In the PRC1 complex, it is required to stimulate the E3 ubiquitin-protein ligase activity of RNF2/RING2.

**Synonyms:**

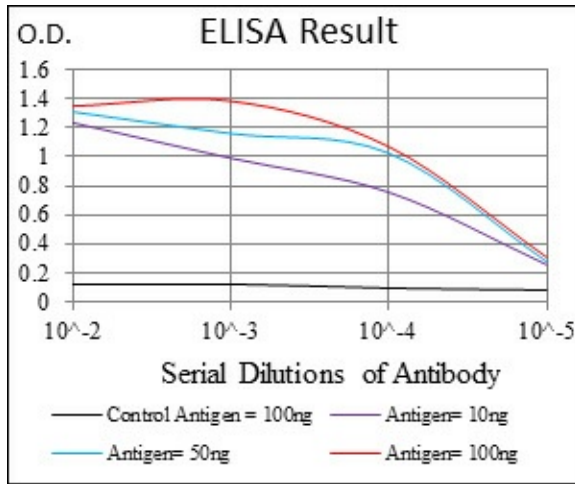
BMI1, PCGF4

**Product images:**

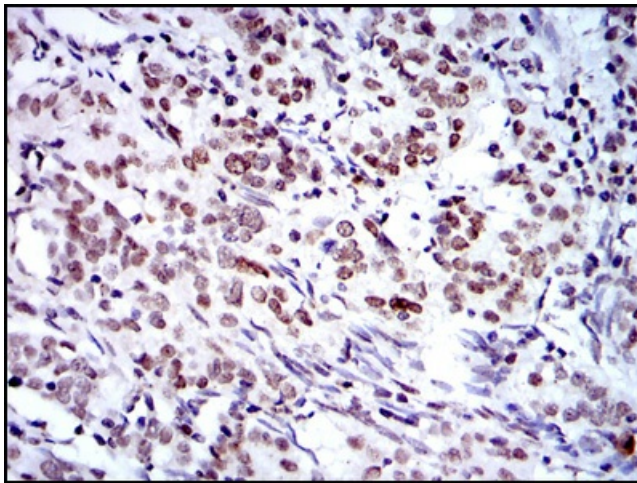
Western blot analysis using BMI1 mAb against human BMI1 (AA: 1-326) recombinant protein. (Expected MW is 74 kDa)



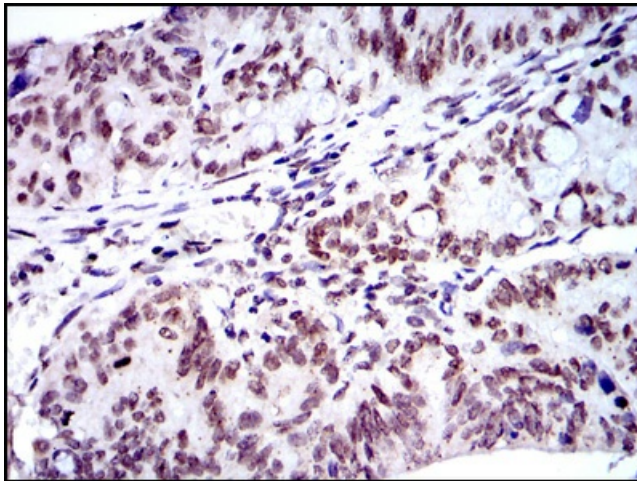
Western blot analysis using BMI1 mAb against HEK293 (1) and BMI1-hlgGfC transfected HEK293 (2) cell lysate.



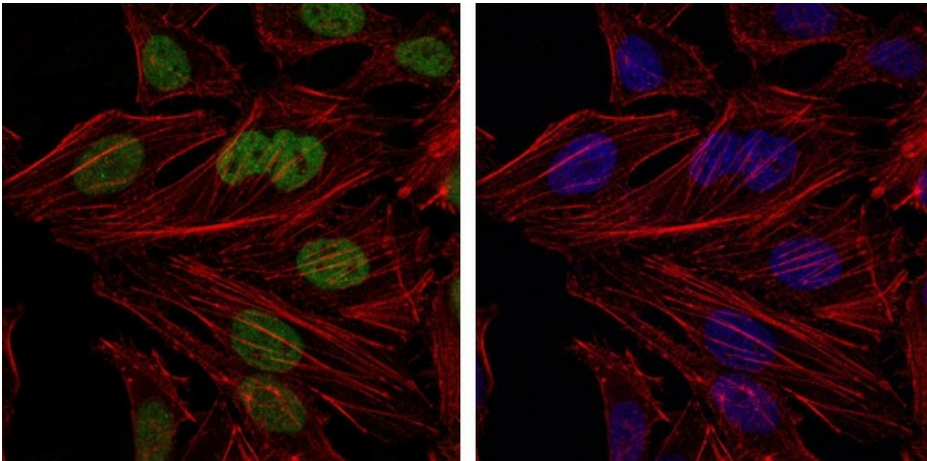
Red: Control Antigen (100ng) Purple: Antigen (10ng)  
 Green: Antigen (50ng) Blue: Antigen (100ng)



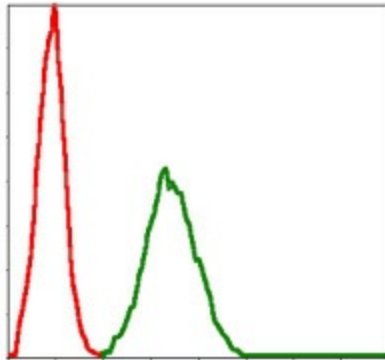
Immunohistochemical analysis of paraffin-embedded cervical cancer tissues using BMI1 mouse mAb with DAB staining.



Immunohistochemical analysis of paraffin-embedded rectum cancer tissues using BMI1 mouse mAb with DAB staining.



Immunofluorescence analysis of HeLa cells using BMI1 mouse mAb (green). Blue: DRAQ5 fluorescent DNA dye. Red: Actin filaments have been labeled with Alexa Fluor-555 phalloidin.



Flow cytometric analysis of NIH/3T3 cells using BMI1 mouse mAb (green) and negative control (red).