

## Product datasheet for **AM06692SU-N**

### IL1 beta (IL1B) Mouse Monoclonal Antibody [Clone ID: 3A6]

#### Product data:

Product Type:	Primary Antibodies
Clone Name:	3A6
Applications:	ELISA, IF, IHC, WB
Recommended Dilution:	<b>Western Blot:</b> 1/500 - 1/2000. <b>Immunohistochemistry on paraffin sections:</b> 1/200 - 1/1000. <b>Immunocytochemistry:</b> 1/200 - 1/1000. <b>ELISA:</b> 1/10000.
Reactivity:	Human
Host:	Mouse
Isotype:	IgG1
Clonality:	Monoclonal
Immunogen:	Purified recombinant fragment of human IL1B expressed in E. Coli.
Specificity:	This antibody reacts to IL1B.
Formulation:	State: Ascites State: Ascitic fluid containing 0.03% sodium azide.
Conjugation:	Unconjugated
Storage:	Store the antibody undiluted at 2-8°C for one month or (in aliquots) at -20°C for longer. Avoid repeated freezing and thawing.
Stability:	Shelf life: one year from despatch.
Predicted Protein Size:	31 kDa
Gene Name:	interleukin 1 beta
Database Link:	<a href="#">Entrez Gene 3553 Human P01584</a>



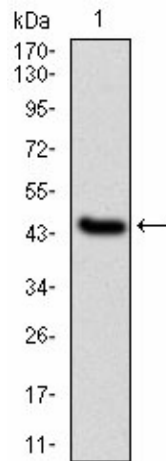
[View online »](#)

**Background:**

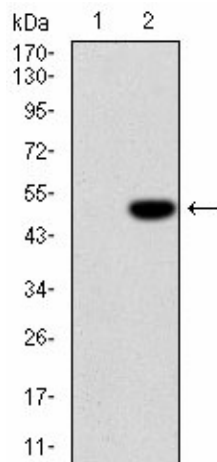
The modification of proteins with ubiquitin is an important cellular mechanism for targeting abnormal or short-lived proteins for degradation. Ubiquitination involves at least three classes of enzymes: ubiquitin-activating enzymes, or E1s, ubiquitin-conjugating enzymes, or E2s, and ubiquitin-protein ligases, or E3s. This gene encodes a member of the E2 ubiquitin-conjugating enzyme family. Four alternatively spliced transcript variants encoding the same protein have been found for this gene.

**Synonyms:**

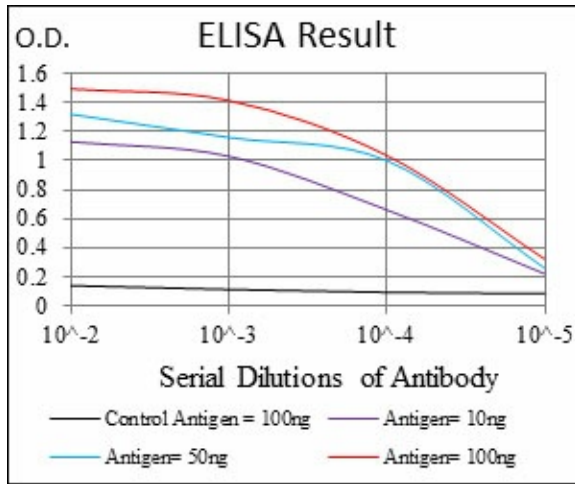
IL-1 beta, IL1B, IL1 beta, IL1F2, Catabolin

**Product images:**

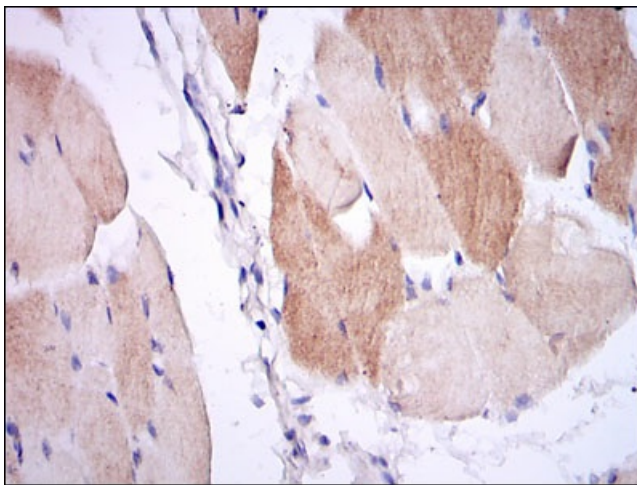
Western blot analysis using IL1B mAb against human IL1B (AA: 126-261) recombinant protein. (Expected MW is 41 kDa)



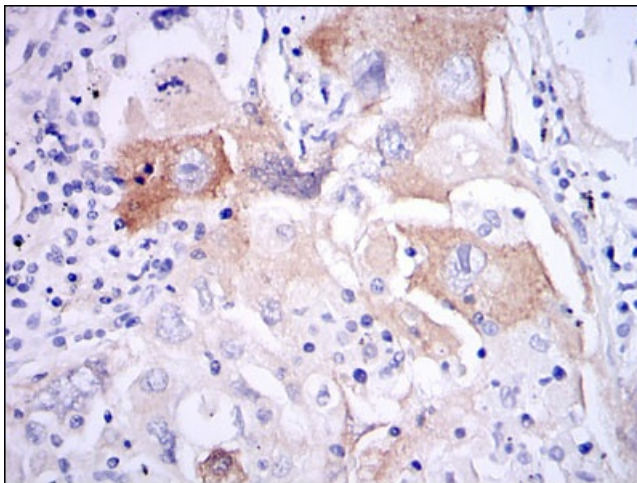
Western blot analysis using IL1B mAb against HEK293 (1) and IL1B-hlgGfc transfected HEK293 (2) cell lysate.



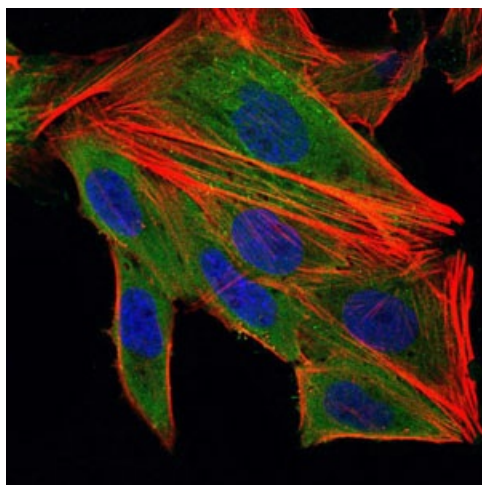
Red: Control Antigen (100ng) Purple: Antigen (10ng) Green: Antigen (50ng) Blue: Antigen (100ng)



Immunohistochemical analysis of paraffin-embedded muscle tissues using IL1B mouse mAb with DAB staining.



Immunohistochemical analysis of paraffin-embedded lung cancer tissues using IL1B mouse mAb with DAB staining.



Immunofluorescence analysis of HepG2 cells using IL1B mouse mAb (green). Blue: DRAQ5 fluorescent DNA dye. Red: Actin filaments have been labeled with Alexa Fluor-555 phalloidin.