

## Product datasheet for **AM06690SU-N**

### DLK (DLK1) Mouse Monoclonal Antibody [Clone ID: 3A10]

#### Product data:

Product Type:	Primary Antibodies
Clone Name:	3A10
Applications:	ELISA, FC, IF, WB
Recommended Dilution:	<b>Western Blot:</b> 1/500 - 1/2000. <b>Immunofluorescence:</b> 1/200 - 1/1000. <b>Flow cytometry:</b> 1/200 - 1/400. <b>ELISA:</b> 1/10000.
Reactivity:	Human
Host:	Mouse
Isotype:	IgG1
Clonality:	Monoclonal
Immunogen:	Purified recombinant fragment of human DLK1 expressed in E. Coli.
Specificity:	This antibody reacts to DLK1.
Formulation:	State: Ascites State: Ascitic fluid containing 0.03% sodium azide.
Conjugation:	Unconjugated
Storage:	Store the antibody undiluted at 2-8°C for one month or (in aliquots) at -20°C for longer. Avoid repeated freezing and thawing.
Stability:	Shelf life: one year from despatch.
Predicted Protein Size:	41 kDa
Database Link:	<a href="#">Entrez Gene 8788 Human P80370</a>



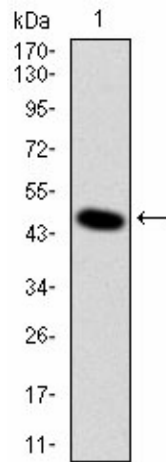
[View online »](#)

**Background:**

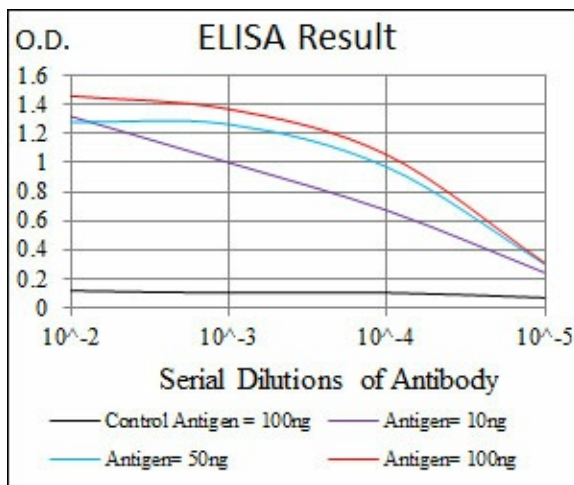
This gene encodes a transmembrane protein containing six epidermal growth factor repeats. The protein is involved in the differentiation of several cell types, including adipocytes; it is also thought to be a tumor suppressor. It is one of several imprinted genes located in a region of on chr 14q32. Certain mutations in this imprinted region can cause phenotypes similar to maternal and paternal uniparental disomy of chromosome 14 (UPD14). This gene is expressed from the paternal allele. A polymorphism within this gene has been associated with child and adolescent obesity. The mode of inheritance for this polymorphism is polar overdominance; this non-Mendelian inheritance pattern was first described in sheep with the callipyge phenotype, which is characterized by muscle hypertrophy and decreased fat mass.

**Synonyms:**

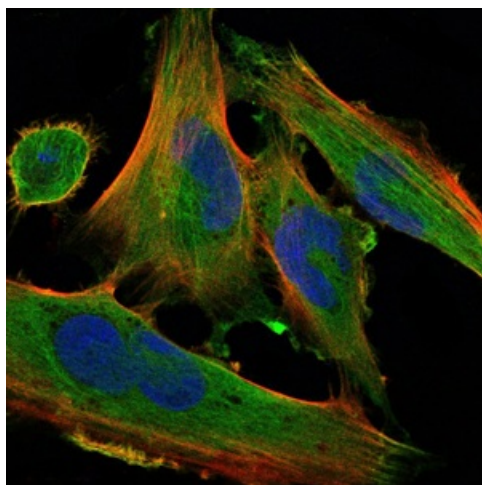
DLK-1, DLK, Protein delta homolog 1, pG2, PREF1, Preadipocyte factor 1

**Product images:**


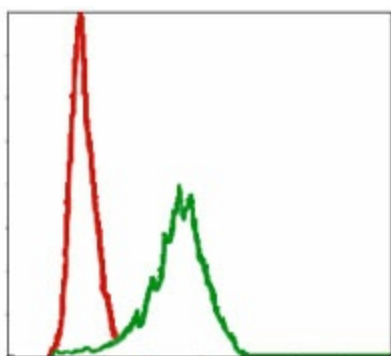
Western blot analysis using DLK1 mAb against human DLK1 (AA: 174-349) recombinant protein. (Expected MW is 44.9 kDa)



Red: Control Antigen (100ng) Purple: Antigen (10ng) Green: Antigen (50ng) Blue: Antigen (100ng)



Immunofluorescence analysis of U251 cells using DLK1 mouse mAb (green). Blue: DRAQ5 fluorescent DNA dye. Red: Actin filaments have been labeled with Alexa Fluor-555 phalloidin.



Flow cytometric analysis of NIH/3T3 cells using DLK1 mouse mAb (green) and negative control (red).