

Product datasheet for **AM06687SU-N**

KIF22 Mouse Monoclonal Antibody [Clone ID: 1E3]

Product data:

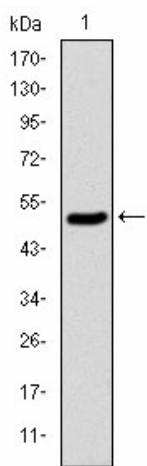
Product Type:	Primary Antibodies
Clone Name:	1E3
Applications:	ELISA, FC, IHC, WB
Recommended Dilution:	Western Blot: 1/500 - 1/2000. Immunohistochemistry on paraffin sections: 1/200 - 1/1000. Flow cytometry: 1/200 - 1/400. ELISA: 1/10000.
Reactivity:	Human
Host:	Mouse
Isotype:	IgG1
Clonality:	Monoclonal
Immunogen:	Purified recombinant fragment of human KID expressed in E. Coli.
Specificity:	This antibody reacts to KID.
Formulation:	State: Ascites State: Ascitic fluid containing 0.03% sodium azide.
Conjugation:	Unconjugated
Storage:	Store the antibody undiluted at 2-8°C for one month or (in aliquots) at -20°C for longer. Avoid repeated freezing and thawing.
Stability:	Shelf life: one year from despatch.
Predicted Protein Size:	73 kDa
Gene Name:	kinesin family member 22
Database Link:	Entrez Gene 3835 Human Q14807
Background:	The protein encoded by this gene is a member of kinesin-like protein family. This family of proteins are microtubule-dependent molecular motors that transport organelles within cells and move chromosomes during cell division. The C-terminal half of this protein has been shown to bind DNA. Studies with the Xenopus homolog suggests its essential role in metaphase chromosome alignment and maintenance.



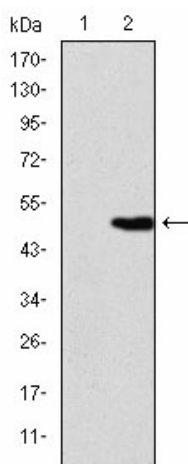
[View online »](#)

Synonyms: KIF22, KID, KNLSL4, Kinesin-like protein KIF22, Kinesin-like DNA-binding protein, Kinesin-like protein 4

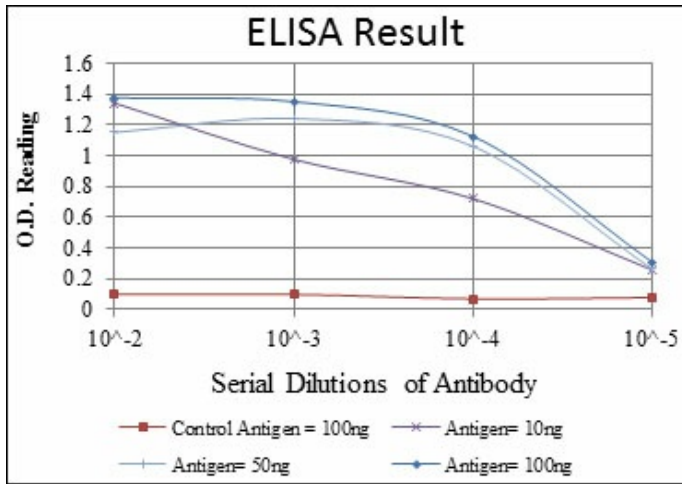
Product images:



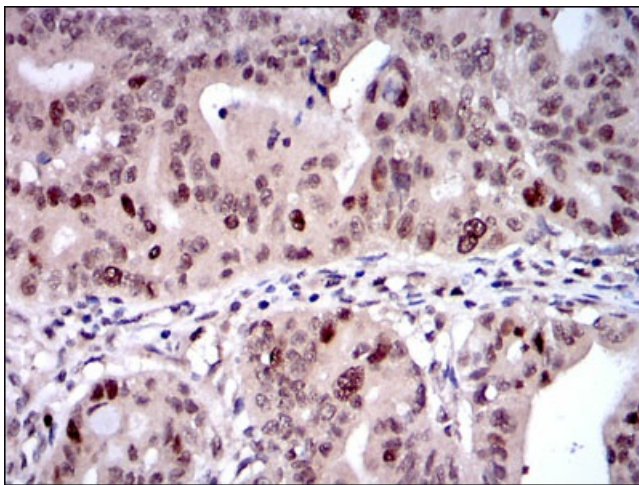
Western blot analysis using KID mAb against human KID (AA: 225-419) recombinant protein. (Expected MW is 47 kDa)



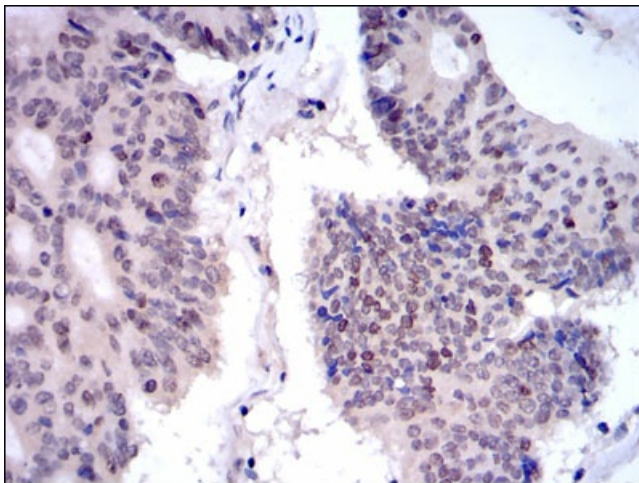
Western blot analysis using KID mAb against HEK293 (1) and KID (AA: 225-419)-hlgGFc transfected HEK293 (2) cell lysate.



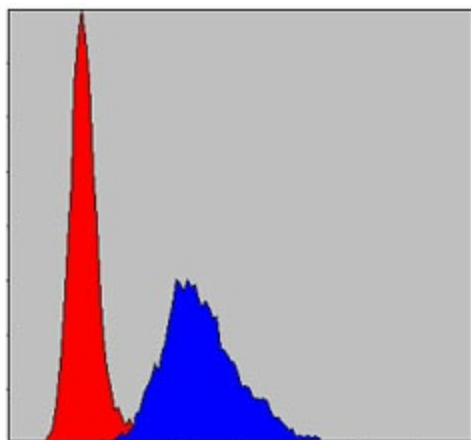
Red: Control Antigen (100ng) Purple: Antigen (10ng) Green: Antigen (50ng) Blue: Antigen (100ng)



Immunohistochemical analysis of paraffin-embedded rectum cancer tissues using KID mouse mAb with DAB staining.



Immunohistochemical analysis of paraffin-embedded colon cancer tissues using KID mouse mAb with DAB staining.



Flow cytometric analysis of NIH/3T3 cells using KID mouse mAb (blue) and negative control (red).