

## Product datasheet for **AM06684SU-N**

### TCP1 beta (CCT2) Mouse Monoclonal Antibody [Clone ID: 5B5C4]

#### Product data:

|                         |   |
|-------------------------|---|
| Product Type:           | Primary Antibodies  |
| Clone Name:             | 5B5C4   |
| Applications:           | ELISA, FC, IF, WB   |
| Recommended Dilution:   | <b>ELISA: 1/10000.</b><br><b>Western Blot:</b> 1/500-1/2000.<br><b>Flow Cytometry:</b> 1/200-1/400.<br><b>Immunofluorescence:</b> 1/200-1/1000. |
| Reactivity:             | Human, Monkey, Mouse, Rat   |
| Host:                   | Mouse   |
| Isotype:                | IgG1  |
| Clonality:              | Monoclonal  |
| Immunogen:              | Purified recombinant fragment of Human CCT2 expressed in E. Coli.   |
| Specificity:            | This antibody recognizes CCT2 / TCP1 beta.  |
| Formulation:            | State: Ascites<br>State: Ascitic fluid<br>Preservative: 0.03% Sodium Azide  |
| Conjugation:            | Unconjugated  |
| Storage:                | Store undiluted at 2-8°C for one month or (in aliquots) at -20°C for longer.<br>Avoid repeated freezing and thawing.                            |
| Stability:              | Shelf life: one year from despatch.   |
| Predicted Protein Size: | 54 kDa  |
| Gene Name:              | chaperonin containing TCP1 subunit 2  |
| Database Link:          | <a href="#">Entrez Gene 10576 Human P78371</a>  |



[View online »](#)

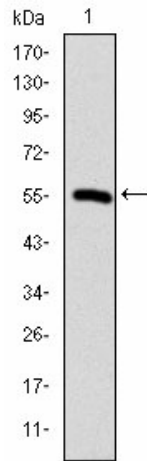
**Background:**

The protein encoded by this gene is a molecular chaperone that is a member of the chaperonin containing TCP1 complex (CCT), also known as the TCP1 ring complex (TRiC). This complex consists of two identical stacked rings, each containing eight different proteins. Unfolded polypeptides enter the central cavity of the complex and are folded in an ATP-dependent manner. The complex folds various proteins, including actin and tubulin. Two transcript variants encoding different isoforms have been found for this gene.

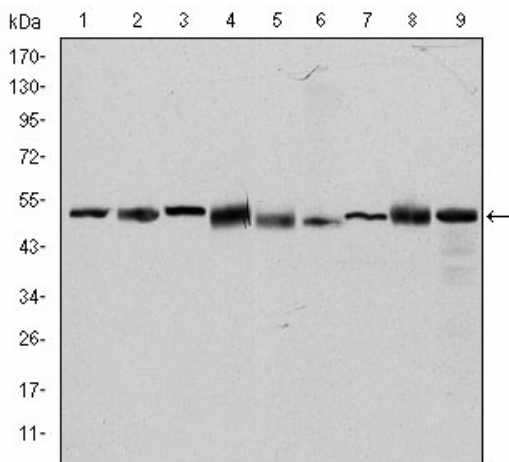
**Synonyms:**

99D8.1, CCT-beta, CCTB, TCP-1 beta

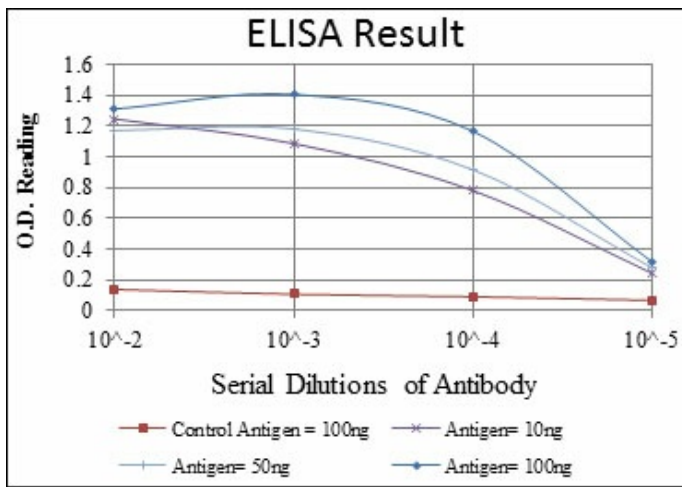
**Product images:**



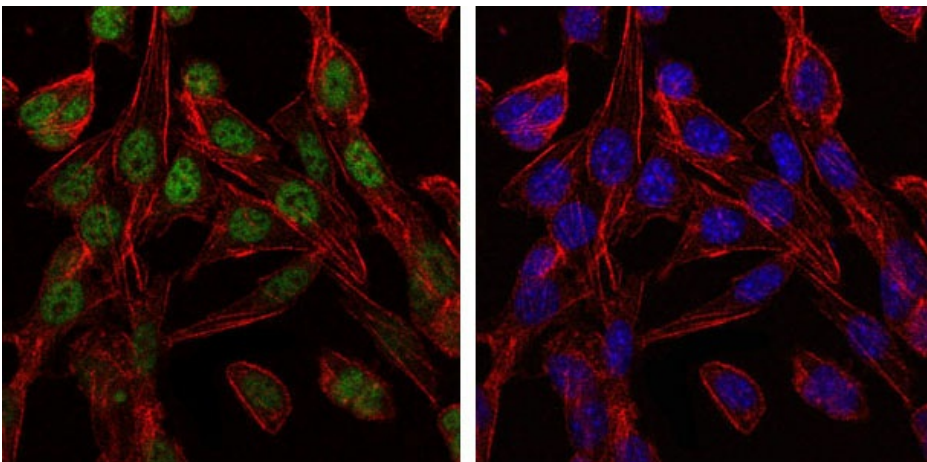
Western blot analysis using CCT2 mAb against Human CCT2 (AA: 87-290) recombinant protein. (Expected MW is 47.9 kDa)



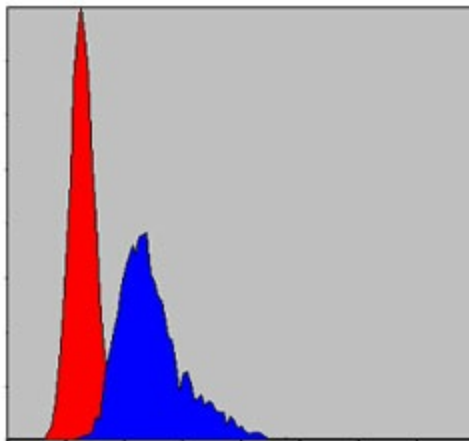
Western blot analysis using CCT2 Mouse mAb against HeLa (Lane 1), MCF-7 (Lane 2), Jurkat (Lane 3), T47D (Lane 4), K562 (Lane 5), A431 (Lane 6), NIH/3T3 (Lane 7), PC-12 (Lane 8) and Cos7 (Lane 9) cell lysate.



Red: Control Antigen (100ng) Purple: Antigen (10ng) Green: Antigen (50ng) Blue: Antigen (100ng)



Immunofluorescence analysis of 3T3-L1 cells using CCT2 Mouse mAb (green). Blue: DRAQ5 fluorescent DNA dye. Red: Actin filaments have been labeled with Alexa Fluor-555 phalloidin.



Flow cytometric analysis of NIH/3T3 cells using CCT2 Mouse mAb (blue) and Negative Control (red).