

Product datasheet for **AM06672SU-N**

ERK1 (MAPK3) Mouse Monoclonal Antibody [Clone ID: 1E5]

Product data:

Product Type:	Primary Antibodies
Clone Name:	1E5
Applications:	ELISA, FC, IF, IHC, WB
Recommended Dilution:	Western Blot: 1/500 - 1/2000. Immunohistochemistry on paraffin sections 1/200 - 1/1000. Immunofluorescence: 1/200 - 1/1000. Flow cytometry: 1/200 - 1/400. ELISA: 1/10000.
Reactivity:	Human, Monkey, Mouse, Rat
Host:	Mouse
Isotype:	IgG1
Clonality:	Monoclonal
Immunogen:	Purified recombinant fragment of human MAPK3 expressed in E. Coli.
Specificity:	This antibody reacts to MAPK3.
Formulation:	State: Ascites State: Ascitic fluid containing 0.03% sodium azide.
Conjugation:	Unconjugated
Storage:	Store the antibody undiluted at 2-8°C for one month or (in aliquots) at -20°C for longer. Avoid repeated freezing and thawing.
Stability:	Shelf life: one year from despatch.
Predicted Protein Size:	44 kDa
Gene Name:	mitogen-activated protein kinase 3
Database Link:	Entrez Gene 5595 Human P27361



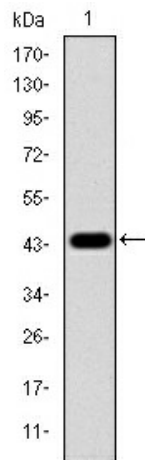
[View online »](#)

Background:

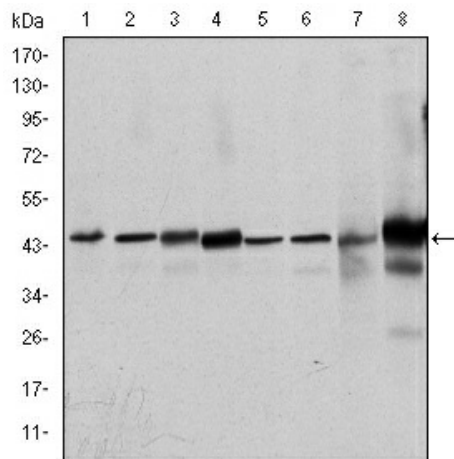
The protein encoded by this gene is a member of the MAP kinase family. MAP kinases, also known as extracellular signal-regulated kinases (ERKs), act in a signaling cascade that regulates various cellular processes such as proliferation, differentiation, and cell cycle progression in response to a variety of extracellular signals. This kinase is activated by upstream kinases, resulting in its translocation to the nucleus where it phosphorylates nuclear targets. Alternatively spliced transcript variants encoding different protein isoforms have been described.

Synonyms:

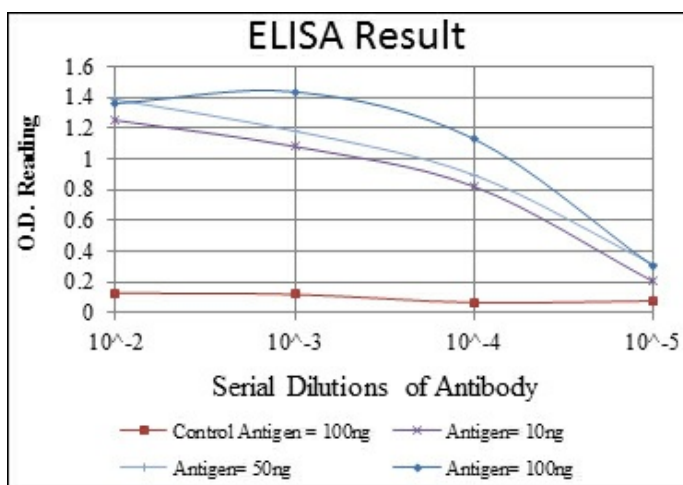
MAP kinase 3, MAPK 3, ERK-1, ERT2, p44-MAPK, p44-ERK1, PRKM3

Product images:


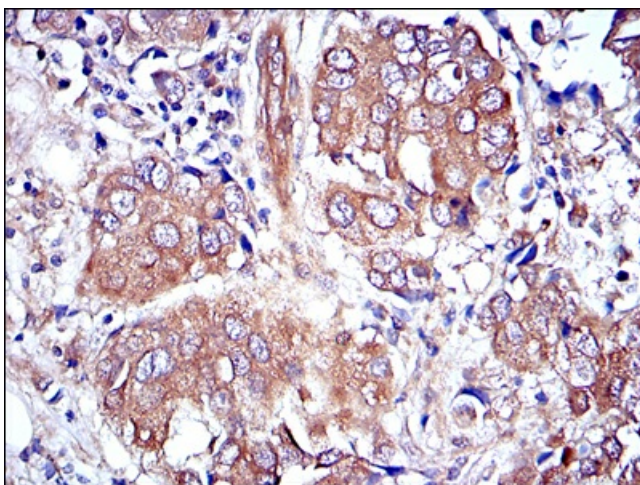
Western blot analysis using MAPK3 mAb against human MAPK3 (AA: 9-143) recombinant protein. (Expected MW is 40.8 kDa)



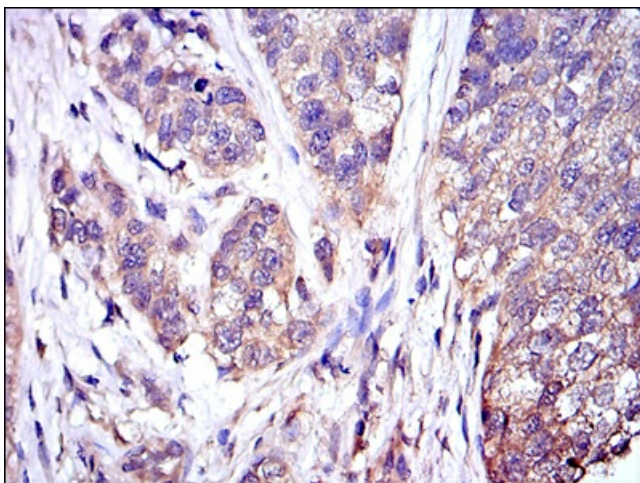
Western blot analysis using MAPK3 mouse mAb against HeLa (1), Jurkat (2), RAW264.7 (3), HEK293 (4), K562 (5), NIH/3T3 (6), Cos7 (7) and PC-12 (8) cell lysate.



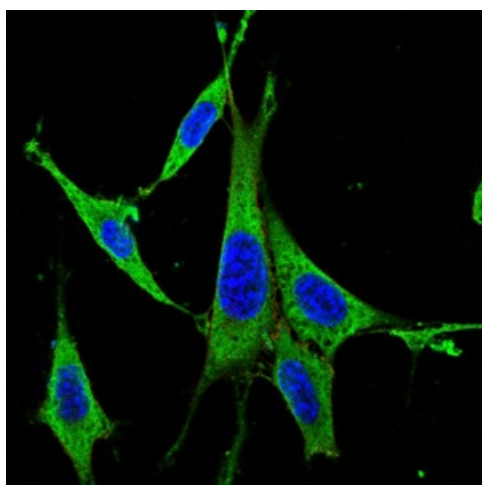
Red: Control Antigen (100ng) Purple: Antigen (10ng) Green: Antigen (50ng) Blue: Antigen (100ng)



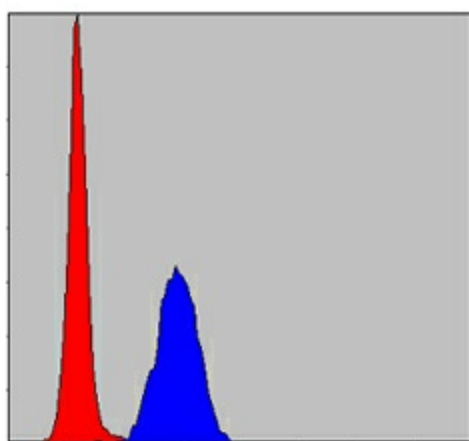
Immunohistochemical analysis of paraffin-embedded breast cancer tissues using MAPK3 mouse mAb with DAB staining.



Immunohistochemical analysis of paraffin-embedded bladder cancer tissues using MAPK3 mouse mAb with DAB staining.



Immunofluorescence analysis of NIH/3T3 cells using MAPK3 mouse mAb (green). Blue: DRAQ5 fluorescent DNA dye. Red: Actin filaments have been labeled with Alexa Fluor-555 phalloidin.



Flow cytometric analysis of Hela cells using MAPK3 mouse mAb (blue) and negative control (red).