

Product datasheet for **AM06668SU-N**

p38 (CRK) Mouse Monoclonal Antibody [Clone ID: 3G11E8]

Product data:

Product Type:	Primary Antibodies
Clone Name:	3G11E8
Applications:	ELISA, FC, IF, IHC, WB
Recommended Dilution:	ELISA: 1/10000. Western Blot: 1/500 - 1/2000. Flow Cytometry: 1/200 - 1/400. Immunofluorescence: 1/200 - 1/1000. Immunohistochemistry on Paraffin Sections: 1/200 - 1/1000.
Reactivity:	Human
Host:	Mouse
Isotype:	IgG2b
Clonality:	Monoclonal
Immunogen:	Purified recombinant fragment of Human CRK expressed in E. Coli.
Specificity:	This antibody recognizes CRK.
Formulation:	State: Ascites State: Ascitic fluid containing 0.03% Sodium Azide.
Conjugation:	Unconjugated
Storage:	Store the antibody undiluted at 2-8°C for one month or (in aliquots) at -20°C for longer. Avoid repeated freezing and thawing.
Stability:	Shelf life: one year from despatch.
Predicted Protein Size:	42 kDa
Gene Name:	v-crk avian sarcoma virus CT10 oncogene homolog
Database Link:	Entrez Gene 1398 Human P46108



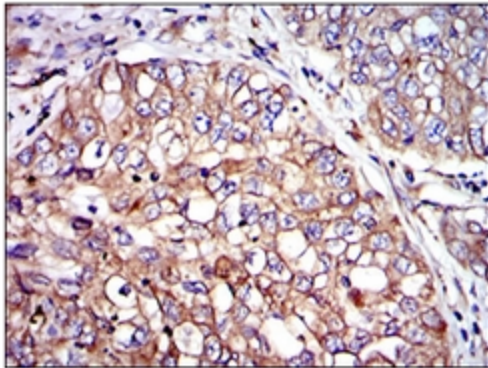
[View online »](#)

Background:

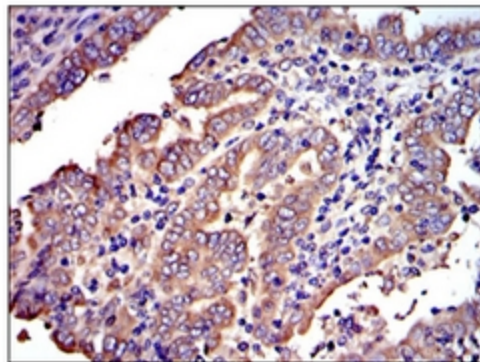
This gene encodes a member of an adapter protein family that binds to several tyrosine-phosphorylated proteins. The product of this gene has several SH2 and SH3 domains (src-homology domains) and is involved in several signaling pathways, recruiting cytoplasmic proteins in the vicinity of tyrosine kinase through SH2-phosphotyrosine interaction. The N-terminal SH2 domain of this protein functions as a positive regulator of transformation whereas the C-terminal SH3 domain functions as a negative regulator of transformation. Two alternative transcripts encoding different isoforms with distinct biological activity have been described.

Synonyms:

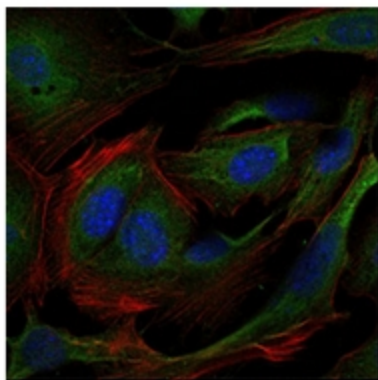
Proto-oncogene C-crk, p38

Product images:

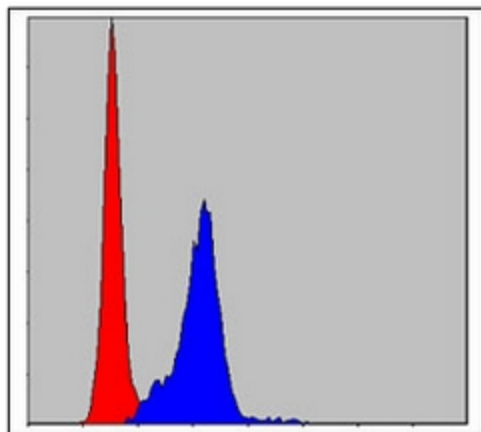
Immunohistochemical analysis of paraffin-embedded lung cancer tissues using CRK antibody Cat.-No AM06668SU-N with DAB staining.



Immunohistochemical analysis of paraffin-embedded intima cancer tissues using CRK antibody Cat.-No AM06668SU-N with DAB staining.



Immunofluorescence analysis of 3T3-L1 cells using CRK antibody Cat.-No AM06668SU-N (green). Blue: DRAQ5 fluorescent DNA dye. Red: Actin filaments have been labeled with Alexa Fluor-555 phalloidin.



Flow Cytometric analysis of HeLa cells using CRK antibody Cat.-No AM06668SU-N (blue) and negative control (red).