

Product datasheet for **AM06667SU-N**

p38 (CRK) Mouse Monoclonal Antibody [Clone ID: 3G11C1]

Product data:

Product Type:	Primary Antibodies
Clone Name:	3G11C1
Applications:	ELISA, FC, IF, IHC, WB
Recommended Dilution:	Western Blot: 1/500 - 1/2000. Immunohistochemistry on paraffin sections: 1/200 - 1/1000. Immunofluorescence: 1/200 - 1/1000. Flow cytometry: 1/200 - 1/400. ELISA: 1/10000.
Reactivity:	Human
Host:	Mouse
Isotype:	IgG2b
Clonality:	Monoclonal
Immunogen:	Purified recombinant fragment of human CRK expressed in E. Coli.
Specificity:	This antibody reacts to CRK.
Formulation:	State: Ascites State: Ascitic fluid containing 0.03% sodium azide.
Conjugation:	Unconjugated
Storage:	Store the antibody undiluted at 2-8°C for one month or (in aliquots) at -20°C for longer. Avoid repeated freezing and thawing.
Stability:	Shelf life: one year from despatch.
Predicted Protein Size:	42 kDa
Gene Name:	v-crk avian sarcoma virus CT10 oncogene homolog
Database Link:	Entrez Gene 1398 Human P46108



[View online »](#)

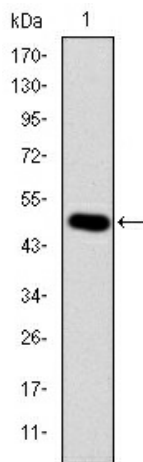
Background:

This gene encodes a member of an adapter protein family that binds to several tyrosine-phosphorylated proteins. The product of this gene has several SH2 and SH3 domains (src-homology domains) and is involved in several signaling pathways, recruiting cytoplasmic proteins in the vicinity of tyrosine kinase through SH2-phosphotyrosine interaction. The N-terminal SH2 domain of this protein functions as a positive regulator of transformation whereas the C-terminal SH3 domain functions as a negative regulator of transformation. Two alternative transcripts encoding different isoforms with distinct biological activity have been described.

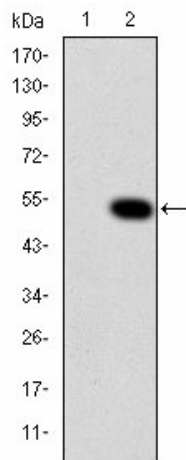
Synonyms:

Proto-oncogene C-crk, p38

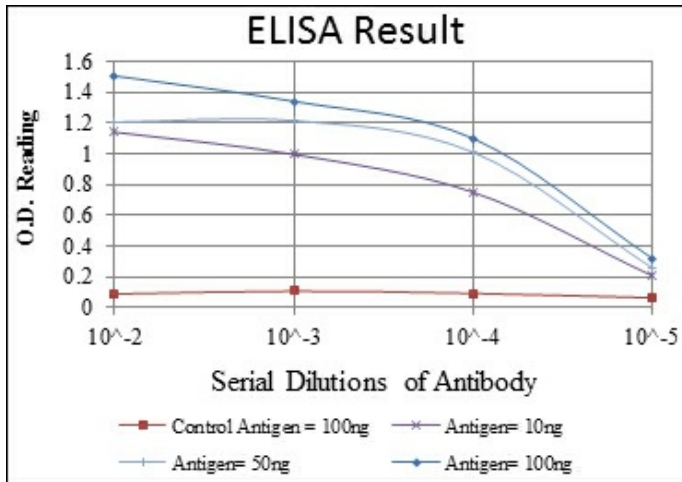
Product images:



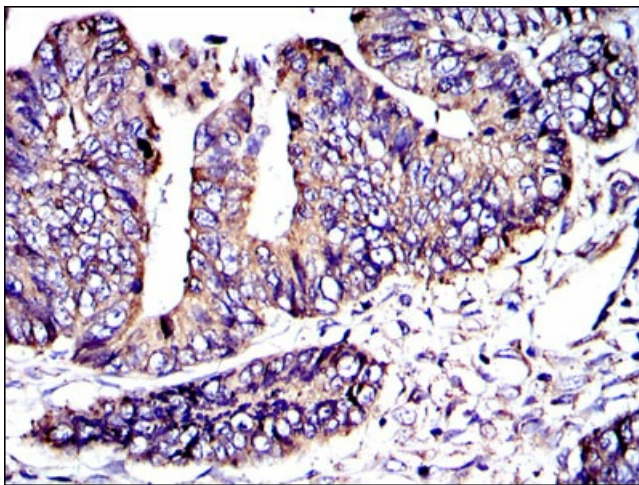
Western blot analysis using CRK mAb against human CRK (AA: 1-204) recombinant protein. (Expected MW is 48.4 kDa)



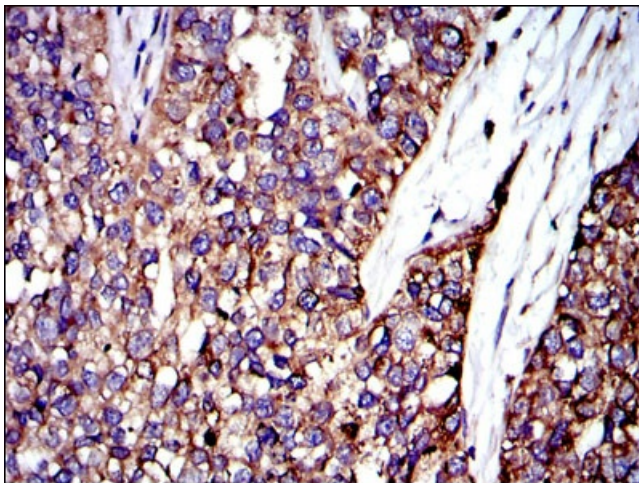
Western blot analysis using CRK mAb against HEK293 (1) and CRK (AA: 1-204)-hlgGfc transfected HEK293 (2) cell lysate.



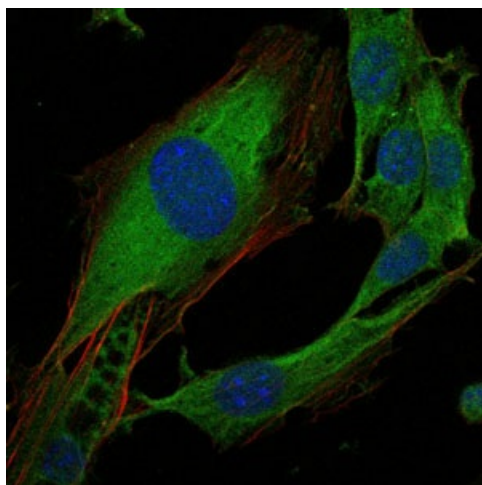
Red: Control Antigen (100ng) Purple: Antigen (10ng) Green: Antigen (50ng) Blue: Antigen (100ng)



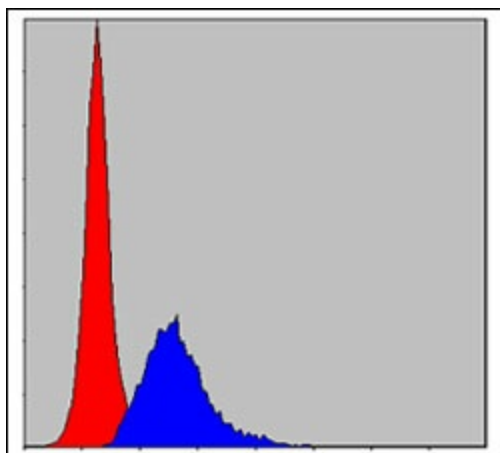
Immunohistochemical analysis of paraffin-embedded rectum cancer tissues using CRK mouse mAb with DAB staining.



Immunohistochemical analysis of paraffin-embedded bladder cancer tissues using CRK mouse mAb with DAB staining.



Immunofluorescence analysis of 3T3-L1 cells using CRK mouse mAb (green). Blue: DRAQ5 fluorescent DNA dye. Red: Actin filaments have been labeled with Alexa Fluor-555 phalloidin.



Flow cytometric analysis of MCF-7 cells using CRK mouse mAb (blue) and negative control (red).