

Product datasheet for **AM06666SU-N**

PSMB8 Mouse Monoclonal Antibody [Clone ID: 1A5]

Product data:

Product Type:	Primary Antibodies
Clone Name:	1A5
Applications:	ELISA, IF, IHC, WB
Recommended Dilution:	Western Blot: 1/500 - 1/2000. Immunohistochemistry on paraffin sections: 1/200 - 1/1000. Immunofluorescence: 1/200 - 1/1000. ELISA: 1/10000.
Reactivity:	Human, Rat
Host:	Mouse
Isotype:	IgG1
Clonality:	Monoclonal
Immunogen:	Purified recombinant fragment of human PSMB8 expressed in E. Coli.
Specificity:	This antibody reacts to PSMB8.
Formulation:	State: Ascites State: Ascitic fluid containing 0.03% sodium azide.
Conjugation:	Unconjugated
Storage:	Store the antibody undiluted at 2-8°C for one month or (in aliquots) at -20°C for longer. Avoid repeated freezing and thawing.
Stability:	Shelf life: one year from despatch.
Predicted Protein Size:	30 kDa
Gene Name:	proteasome subunit beta 8
Database Link:	Entrez Gene 5696 Human P28062



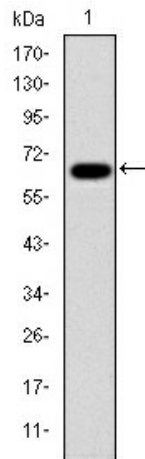
[View online »](#)

Background:

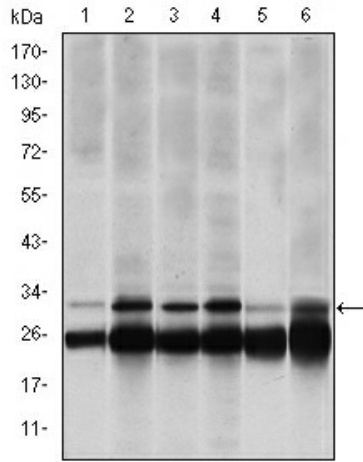
The proteasome is a multicatalytic proteinase complex with a highly ordered ring-shaped 20S core structure. The core structure is composed of 4 rings of 28 non-identical subunits; 2 rings are composed of 7 alpha subunits and 2 rings are composed of 7 beta subunits. Proteasomes are distributed throughout eukaryotic cells at a high concentration and cleave peptides in an ATP/ubiquitin-dependent process in a non-lysosomal pathway. An essential function of a modified proteasome, the immunoproteasome, is the processing of class I MHC peptides. This gene encodes a member of the proteasome B-type family, also known as the T1B family, that is a 20S core beta subunit. This gene is located in the class II region of the MHC (major histocompatibility complex). Expression of this gene is induced by gamma interferon and this gene product replaces catalytic subunit 3 (proteasome beta 5 subunit) in the immunoproteasome. Proteolytic processing is required to generate a mature subunit. Two alternative transcripts encoding two isoforms have been identified; both isoforms are processed to yield the same mature subunit.

Synonyms:

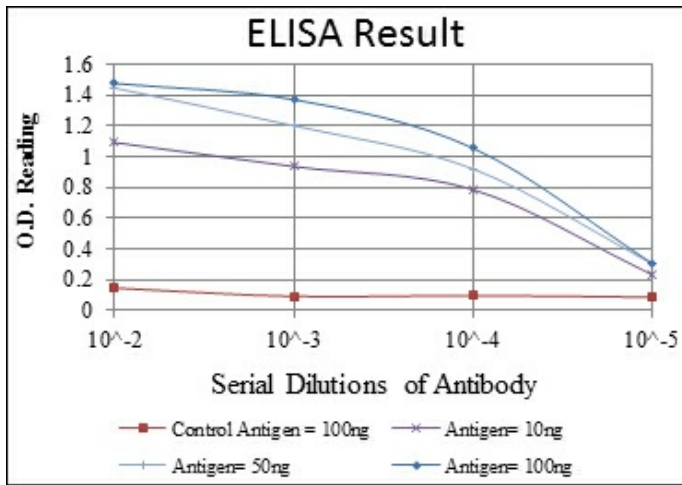
Proteasome subunit beta type-8, Proteasome 20S LMP7, Macropain subunit C13, Proteasome component C13, Proteasome subunit beta-5i, LMP7, PSMB5i, RING10

Product images:

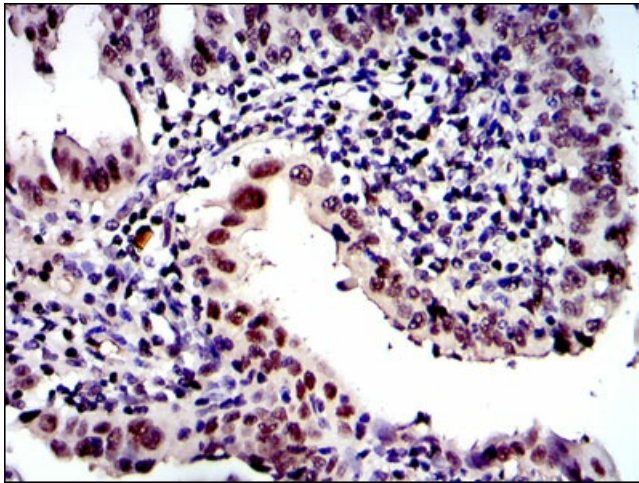
Western blot analysis using PSMB8 mAb against human PSMB8 (AA: 1-272) recombinant protein. (Expected MW is 55.2 kDa)



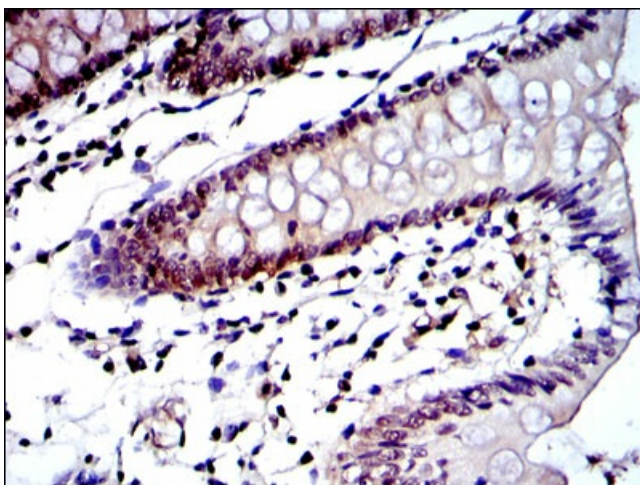
Western blot analysis using PSMB8 mouse mAb against HeLa (1), MCF-7 (2), A431 (3), RAJI (4), MOTL4 (5) and PC-12 (6) cell lysate.



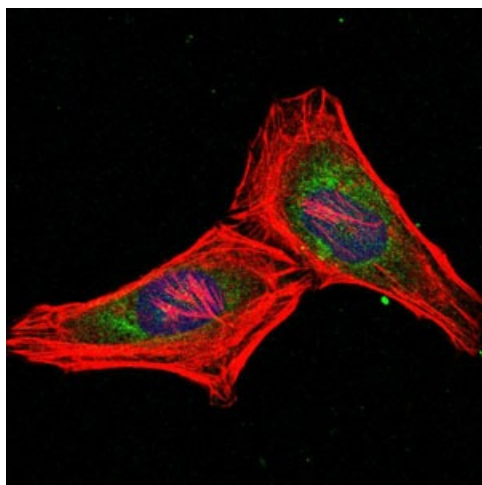
Red: Control Antigen (100ng) Purple: Antigen (10ng) Green: Antigen (50ng) Blue: Antigen (100ng)



Immunohistochemical analysis of paraffin-embedded intima cancer tissues using PSMB8 mouse mAb with DAB staining.



Immunohistochemical analysis of paraffin-embedded colon tissues using PSMB8 mouse mAb with DAB staining.



Immunofluorescence analysis of HeLa cells using PSMB8 mouse mAb (green), Blue: DRAQ5 fluorescent DNA dye. Red: Actin filaments have been labeled with Alexa Fluor-555 phalloidin.