

Product datasheet for **AM06658SU-N**

Lamin A (LMNA) Mouse Monoclonal Antibody [Clone ID: 4E7]

Product data:

Product Type:	Primary Antibodies
Clone Name:	4E7
Applications:	ELISA, IHC, WB
Recommended Dilution:	Western Blot: 1/500 - 1/2000. Immunohistochemistry on paraffin sections 1/200 - 1/1000. ELISA: 1/10000.
Reactivity:	Human, Mouse, Rat
Host:	Mouse
Isotype:	IgG1
Clonality:	Monoclonal
Immunogen:	Purified recombinant fragment of human LMNA expressed in E. Coli.
Specificity:	This antibody reacts to LMNA.
Formulation:	State: Ascites State: Ascitic fluid containing 0.03% sodium azide.
Conjugation:	Unconjugated
Storage:	Store the antibody undiluted at 2-8°C for one month or (in aliquots) at -20°C for longer. Avoid repeated freezing and thawing.
Stability:	Shelf life: one year from despatch.
Predicted Protein Size:	74 kDa
Gene Name:	lamin A/C
Database Link:	Entrez Gene 4000 Human P02545



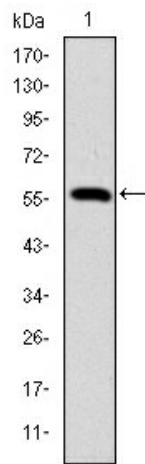
[View online »](#)

Background:

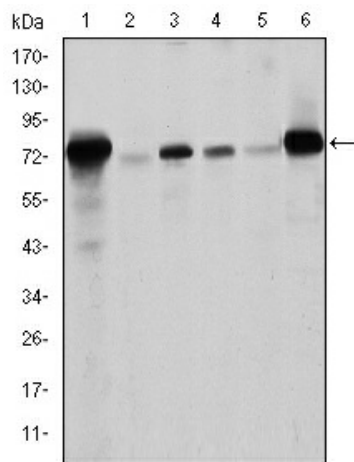
The nuclear lamina consists of a two-dimensional matrix of proteins located next to the inner nuclear membrane. The lamin family of proteins make up the matrix and are highly conserved in evolution. During mitosis, the lamina matrix is reversibly disassembled as the lamin proteins are phosphorylated. Lamin proteins are thought to be involved in nuclear stability, chromatin structure and gene expression. Vertebrate lamins consist of two types, A and B. Through alternate splicing, this gene encodes three type A lamin isoforms. Mutations in this gene lead to several diseases: Emery-Dreifuss muscular dystrophy, familial partial lipodystrophy, limb girdle muscular dystrophy, dilated cardiomyopathy, Charcot-Marie-Tooth disease, and Hutchinson-Gilford progeria syndrome.

Synonyms:

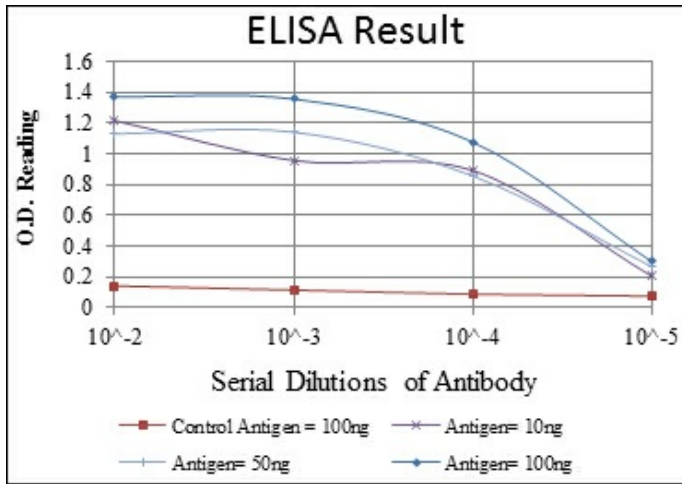
LMNA, LMN1, 70 kDa Lamin, NY-REN-32, NYREN32, Lamin-A/C, Lamin A, Lamin A + C, Nuclear Envelope Marker

Product images:


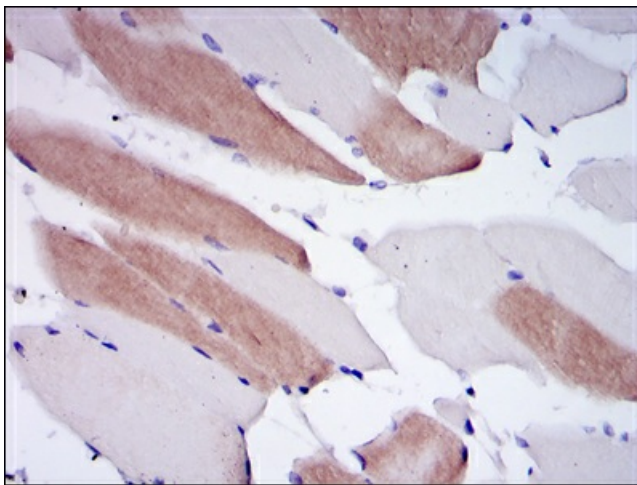
Western blot analysis using LMNA mAb against human LMNA (AA: 212-477) recombinant protein. (Expected MW is 56.3 kDa)



Western blot analysis using LMNA mouse mAb against Raw264.7 (1), PC-12 (2), THP-1 (3), A431 (4), MCF-7 (5) and Jurkat (6) cell lysate.



Red: Control Antigen (100ng) Purple: Antigen (10ng) Green: Antigen (50ng) Blue: Antigen (100ng)



Immunohistochemical analysis of paraffin-embedded human striated muscle tissues using LMNA mouse mAb with DAB staining.