

Product datasheet for **AM06657SU-N**

c-Jun (JUN) Mouse Monoclonal Antibody [Clone ID: 5B1]

Product data:

Product Type:	Primary Antibodies
Clone Name:	5B1
Applications:	ELISA, FC, IF, IHC, WB
Recommended Dilution:	Western Blot: 1/500 - 1/2000. Immunohistochemistry on paraffin sections: 1/200 - 1/1000. Immunofluorescence: 1/200 - 1/1000. Flow cytometry: 1/200 - 1/400. ELISA: 1/10000.
Reactivity:	Human, Monkey, Mouse
Host:	Mouse
Isotype:	IgG1
Clonality:	Monoclonal
Immunogen:	Purified recombinant fragment of human c-Jun expressed in E. Coli.
Specificity:	This antibody reacts to c-Jun.
Formulation:	State: Ascites State: Ascitic fluid containing 0.03% sodium azide.
Conjugation:	Unconjugated
Storage:	Store the antibody undiluted at 2-8°C for one month or (in aliquots) at -20°C for longer. Avoid repeated freezing and thawing.
Stability:	Shelf life: one year from despatch.
Predicted Protein Size:	43 kDa
Gene Name:	Jun proto-oncogene, AP-1 transcription factor subunit
Database Link:	Entrez Gene 3725 Human P05412



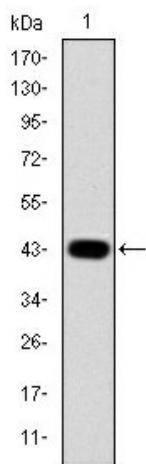
[View online »](#)

Background:

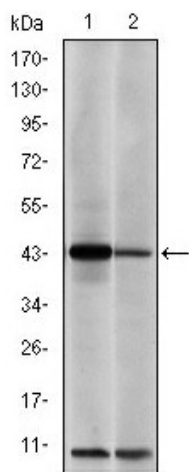
This gene is the putative transforming gene of avian sarcoma virus 17. It encodes a protein which is highly similar to the viral protein, and which interacts directly with specific target DNA sequences to regulate gene expression. This gene is intronless and is mapped to 1p32-p31, a chromosomal region involved in both translocations and deletions in human malignancies.

Synonyms:

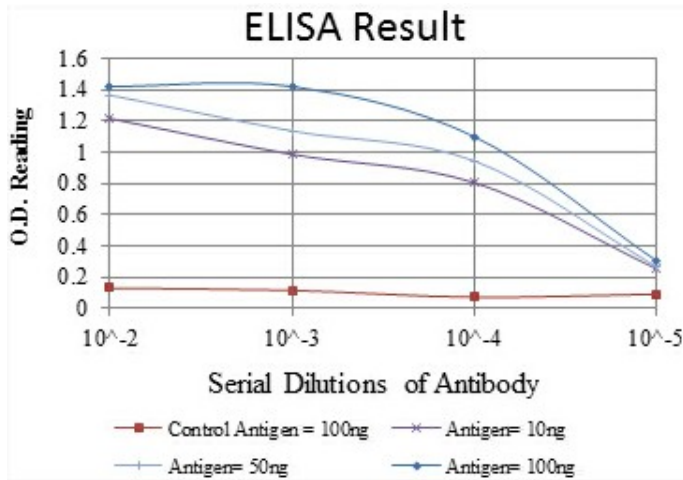
Transcription factor AP1

Product images:

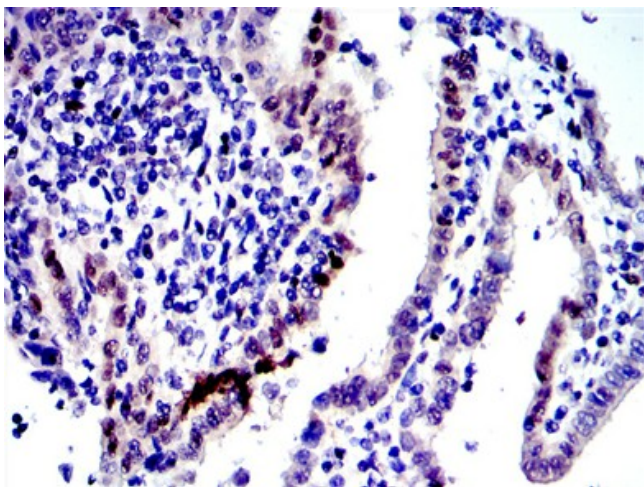
Western blot analysis using c-Jun mAb against human c-Jun (AA: 199-331) recombinant protein.



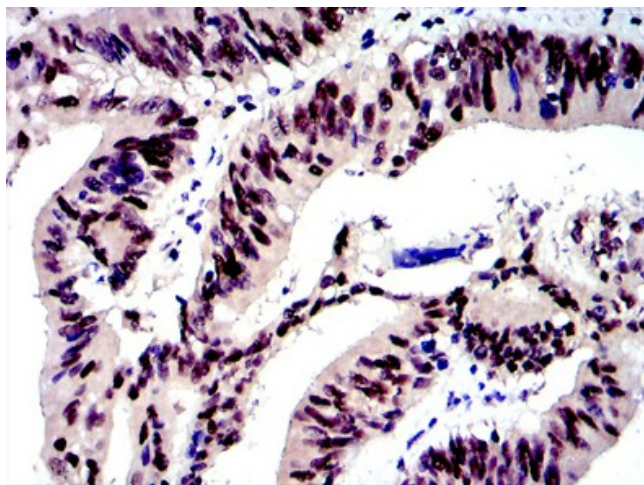
Western blot analysis using c-Jun mouse mAb against NIH/3T3 (1) and Cos7 (2) cell lysate.



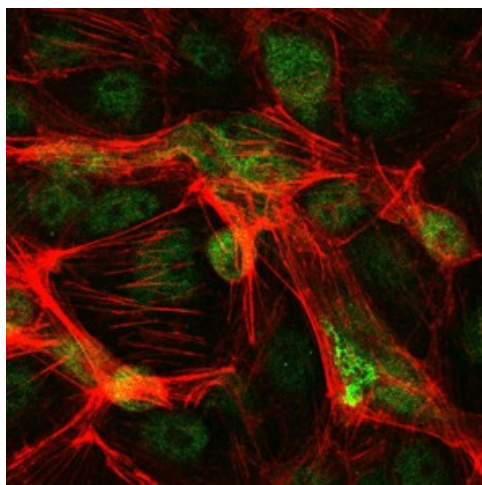
Red: Control Antigen (100ng) Purple: Antigen (10ng) Green: Antigen (50ng) Blue: Antigen (100ng)



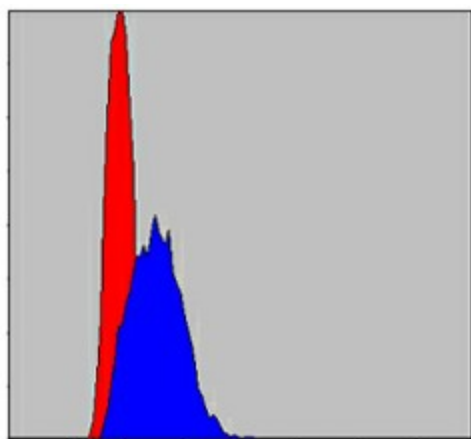
Immunohistochemical analysis of paraffin-embedded human intima cancer tissues using c-Jun mouse mAb with DAB staining.



Immunohistochemical analysis of paraffin-embedded human rectum cancer tissues using c-Jun mouse mAb with DAB staining.



Immunofluorescence analysis of PC-2 cells using c-Jun mouse mAb (green). Red: Actin filaments have been labeled with Alexa Fluor-555 phalloidin.



Flow cytometric analysis of HepG2 cells using c-Jun mouse mAb (blue) and negative control (red).