

## Product datasheet for **AM06643SU-N**

### CRKL Mouse Monoclonal Antibody [Clone ID: 5E12]

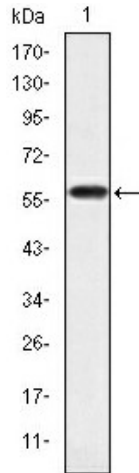
#### Product data:

Product Type:	Primary Antibodies
Clone Name:	5E12
Applications:	ELISA, FC, WB
Recommended Dilution:	<b>Western Blot:</b> 1/500 - 1/2000. <b>Flow cytometry:</b> 1/200 - 1/400. <b>ELISA:</b> 1/10000.
Reactivity:	Human
Host:	Mouse
Isotype:	IgG1
Clonality:	Monoclonal
Immunogen:	Purified recombinant fragment of human CRKL expressed in E. Coli.
Specificity:	This antibody reacts to CRKL.
Formulation:	State: Ascites State: Ascitic fluid containing 0.03% sodium azide.
Conjugation:	Unconjugated
Storage:	Store the antibody undiluted at 2-8°C for one month or (in aliquots) at -20°C for longer. Avoid repeated freezing and thawing.
Stability:	Shelf life: one year from despatch.
Predicted Protein Size:	39 kDa
Gene Name:	v-crk avian sarcoma virus CT10 oncogene homolog-like
Database Link:	<a href="#">Entrez Gene 1399 Human P46109</a>
Background:	This gene encodes a protein kinase containing SH2 and SH3 (src homology) domains which has been shown to activate the RAS and JUN kinase signaling pathways and transform fibroblasts in a RAS-dependent fashion. It is a substrate of the BCR-ABL tyrosine kinase, plays a role in fibroblast transformation by BCR-ABL, and may be oncogenic.
Synonyms:	Crk-like protein

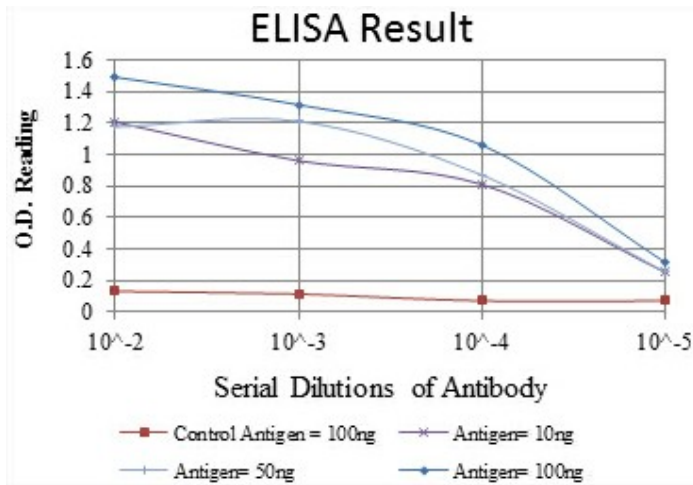


[View online »](#)

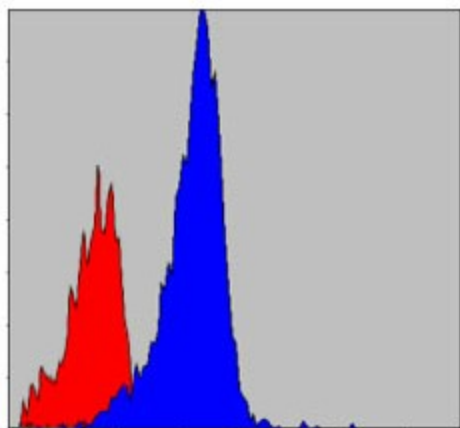
Product images:



Western blot analysis using CRKL mAb against human CRKL (AA: 100-303) recombinant protein. (Expected MW is 60 kDa)



Red: Control Antigen (100ng) Purple: Antigen (10ng) Green: Antigen (50ng) Blue: Antigen (100ng)



Flow cytometric analysis of NIH/3T3 cells using CRKL mouse mAb (blue) and negative control (red).