

Product datasheet for **AM06641SU-N**

FYN Mouse Monoclonal Antibody [Clone ID: 2A10]

Product data:

| | |
|-------------------------|----------------------------------------------------------------------------------------------------------------------------------------------------------------------------------------------------------------------------|
| Product Type: | Primary Antibodies |
| Clone Name: | 2A10 |
| Applications: | ELISA, FC, IF, IHC, WB |
| Recommended Dilution: | Western Blot: 1/500 - 1/2000. Immunohistochemistry on paraffin sections: 1/200 - 1/1000. Immunofluorescence: 1/200 - 1/1000. Flow cytometry: 1/200 - 1/400. ELISA: 1/10000. |
| Reactivity: | Human |
| Host: | Mouse |
| Isotype: | IgG1 |
| Clonality: | Monoclonal |
| Immunogen: | Purified recombinant fragment of human FYN expressed in E. Coli. |
| Specificity: | This antibody reacts to FYN. |
| Formulation: | State: Ascites State: Ascitic fluid containing 0.03% sodium azide. |
| Conjugation: | Unconjugated |
| Storage: | Store the antibody undiluted at 2-8°C for one month or (in aliquots) at -20°C for longer. Avoid repeated freezing and thawing. |
| Stability: | Shelf life: one year from despatch. |
| Predicted Protein Size: | 61 kDa |
| Gene Name: | FYN proto-oncogene, Src family tyrosine kinase |
| Database Link: | Entrez Gene 2534 Human P06241 |



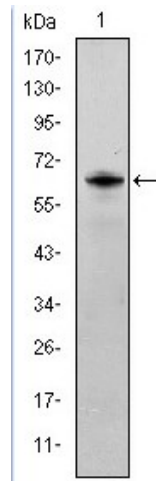
[View online »](#)

Background:

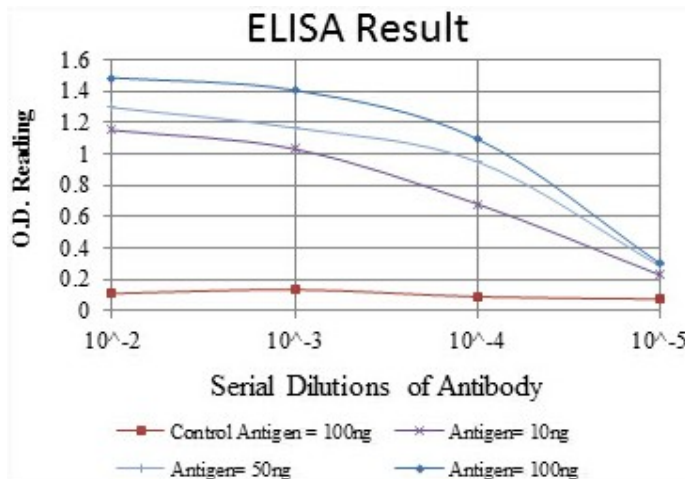
This gene is a member of the protein-tyrosine kinase oncogene family. It encodes a membrane-associated tyrosine kinase that has been implicated in the control of cell growth. The protein associates with the p85 subunit of phosphatidylinositol 3-kinase and interacts with the fyn-binding protein. Alternatively spliced transcript variants encoding distinct isoforms exist.

Synonyms:

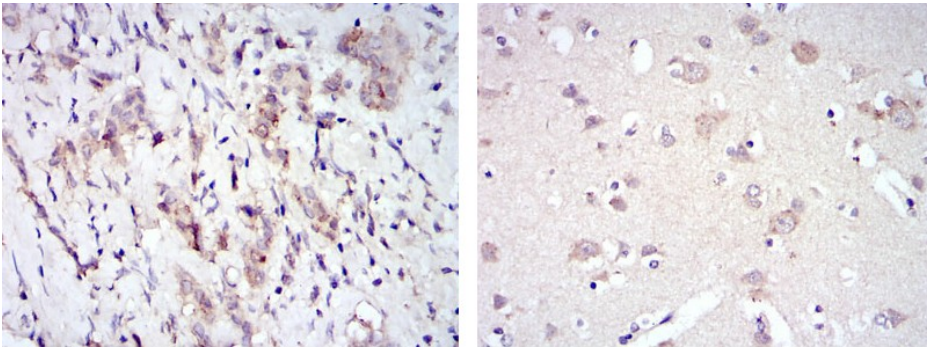
p59-Fyn, Protooncogene Syn, SLK

Product images:


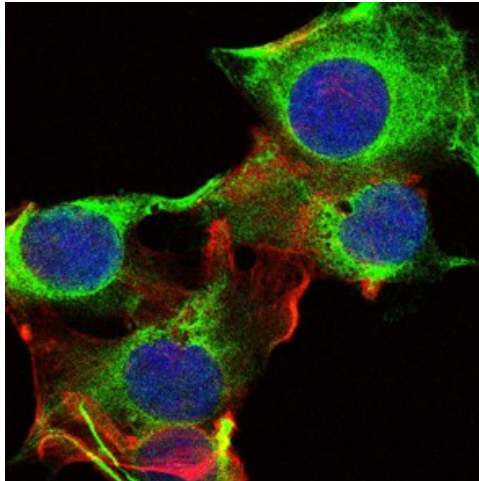
Western blot analysis using FYN mAb against human FYN (AA: 7-176) recombinant protein. (Expected MW is 44.3 kDa)



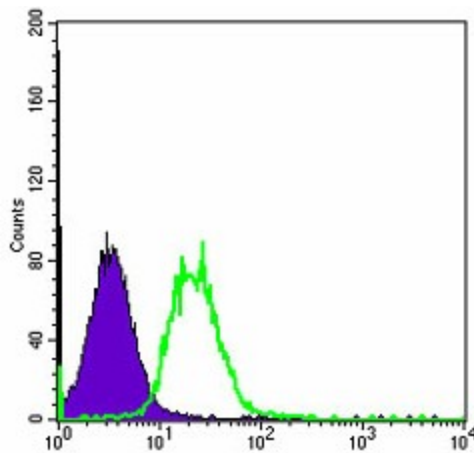
Red: Control Antigen (100ng) Purple: Antigen (10ng) Green: Antigen (50ng) Blue: Antigen (100ng)



Immunohistochemical analysis of paraffin-embedded breast cancer tissues (left) and brain tissues (right) using FYN mouse mAb with DAB staining.



Immunofluorescence analysis of U251 cells using FYN mouse mAb (green). Blue: DRAQ5 fluorescent DNA dye. Red: Actin filaments have been labeled with Alexa Fluor-555 phalloidin.



Flow cytometric analysis of HeLa cells using FYN mouse mAb (green) and negative control (purple).