

Product datasheet for **AM06635SU-N**

c Rel (REL) Mouse Monoclonal Antibody [Clone ID: 1E7]

Product data:

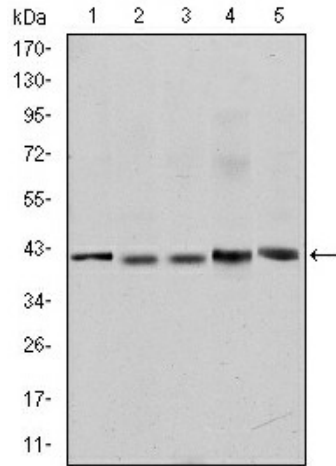
Product Type:	Primary Antibodies
Clone Name:	1E7
Applications:	ELISA, IF, IHC, WB
Recommended Dilution:	Western Blot: 1/500 - 1/2000. Immunohistochemistry on paraffin sections: 1/200 - 1/1000. Immunofluorescence: 1/200 - 1/1000. ELISA: 1/10000.
Reactivity:	Human, Mouse
Host:	Mouse
Isotype:	IgG1
Clonality:	Monoclonal
Immunogen:	Purified recombinant fragment of human c-Rel expressed in E. Coli.
Specificity:	This antibody reacts to c-Rel.
Formulation:	State: Ascites State: Ascitic fluid containing 0.03% sodium azide.
Conjugation:	Unconjugated
Storage:	Store undiluted at 2-8°C for one month or (in aliquots) at -20°C for longer. Avoid repeated freezing and thawing.
Stability:	Shelf life: one year from despatch.
Predicted Protein Size:	78 kDa
Gene Name:	REL proto-oncogene, NF-kB subunit
Database Link:	Entrez Gene 5966 Human Q04864
Background:	The REL gene encodes c-Rel, a transcription factor that is a member of the Rel/NFKB family, which also includes RELA (MIM 164014), RELB (604758), NFKB1 (MIM 164011), and NFKB2 (MIM 164012). These proteins are related through a highly conserved N-terminal region termed the 'Rel domain,' which is responsible for DNA binding, dimerization, nuclear localization, and binding to the NFKB inhibitor.



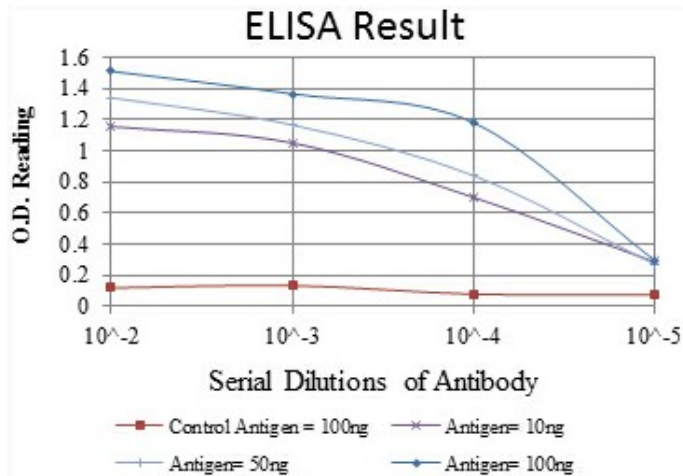
[View online »](#)

Synonyms: c-Rel

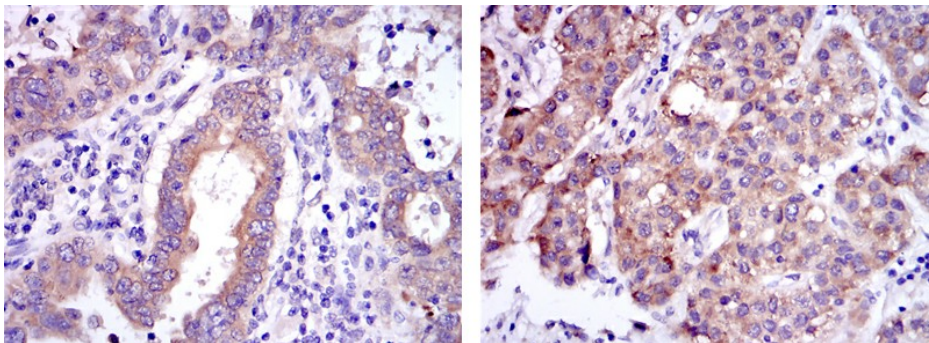
Product images:



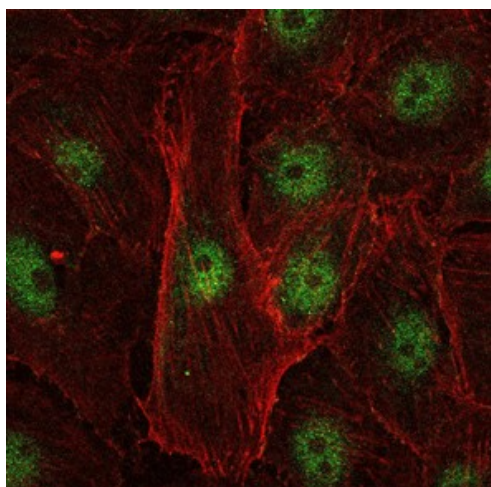
Western blot analysis using c-Rel mouse mAb against Jurkat (1), NIH/3T3 (2), HeLa (3), HEK293 (4) and RAJI (5) cell lysate.



Red: Control Antigen (100ng) Purple: Antigen (10ng) Green: Antigen (50ng) Blue: Antigen (100ng)



Immunohistochemical analysis of paraffin-embedded endometrial cancer tissues (left) and liver cancer tissues (right) using c-Rel mouse mAb with DAB staining.



Immunofluorescence analysis of U251 cells using c-Rel mouse mAb (green). Blue: DRAQ5 fluorescent DNA dye. Red: Actin filaments have been labeled with Alexa Fluor-555 phalloidin.