

## Product datasheet for **AM06634SU-N**

### SMN1 Mouse Monoclonal Antibody [Clone ID: 5H1]

#### Product data:

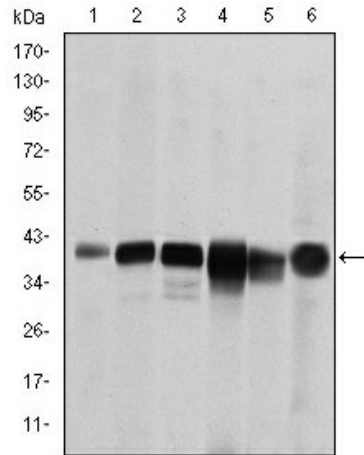
|                         |   |
|-------------------------|---|
| Product Type:           | Primary Antibodies  |
| Clone Name:             | 5H1   |
| Applications:           | ELISA, IF, IHC, WB  |
| Recommended Dilution:   | <b>Western Blot:</b> 1/500 - 1/2000.<br><b>Immunohistochemistry on paraffin sections:</b> 1/200 - 1/1000.<br><b>Immunofluorescence:</b> 1/200 - 1/1000.<br><b>ELISA:</b> 1/10000.   |
| Reactivity:             | Human, Monkey   |
| Host:                   | Mouse   |
| Isotype:                | IgG1  |
| Clonality:              | Monoclonal  |
| Immunogen:              | Purified recombinant fragment of human SMN1 expressed in E. Coli.   |
| Specificity:            | This antibody reacts to SMN1.   |
| Formulation:            | State: Ascites<br>State: Ascitic fluid containing 0.03% sodium azide.   |
| Conjugation:            | Unconjugated  |
| Storage:                | Store undiluted at 2-8°C for one month or (in aliquots) at -20°C for longer.<br>Avoid repeated freezing and thawing.  |
| Stability:              | Shelf life: one year from despatch.   |
| Predicted Protein Size: | 39 kDa  |
| Gene Name:              | survival of motor neuron 1, telomeric   |
| Database Link:          | <a href="#">Entrez Gene 6606 Human Q16637</a>   |
| Background:             | This gene is part of a 500 kb inverted duplication on chromosome 5q13. This duplicated region contains at least four genes and repetitive elements which make it prone to rearrangements and deletions. The repetitiveness and complexity of the sequence have also caused difficulty in determining the organization of this genomic region. The telomeric and centromeric copies of this gene are nearly identical and encode the same protein. |



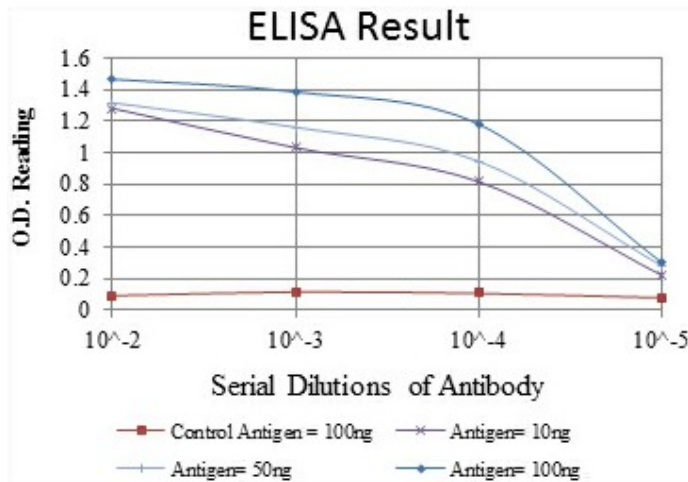
[View online »](#)

**Synonyms:** SMN, SMNT, SMNC, Survival motor neuron protein, Component of gems 1, Gemin1, Gemin-1

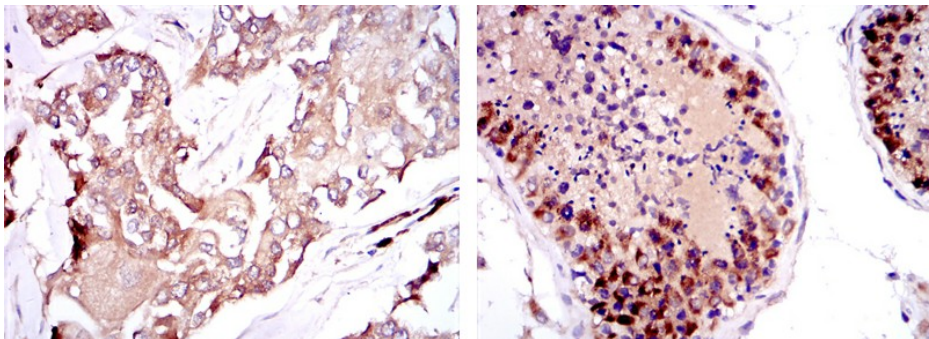
**Product images:**



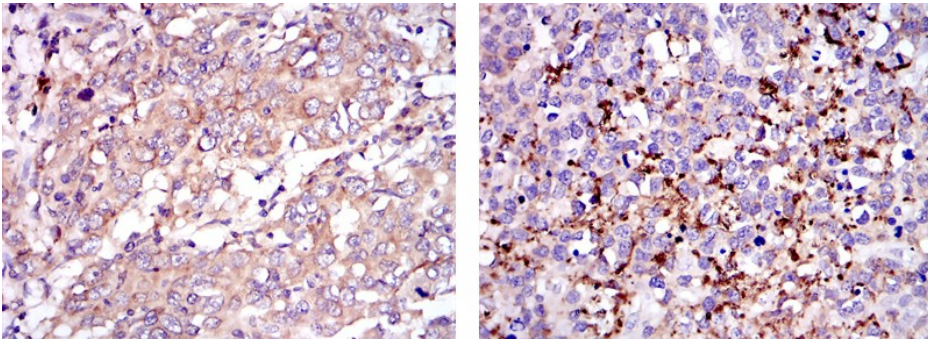
Western blot analysis using SMN1 mouse mAb against RAJ1 (1), Cos7 (2), Jurkat (3), K562 (4), HepG2 (5) and HepG2 (6) cell lysate.



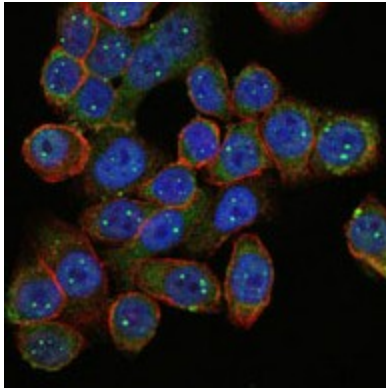
Red: Control Antigen (100ng) Purple: Antigen (10ng) Green: Antigen (50ng) Blue: Antigen (100ng)



Immunohistochemical analysis of paraffin-embedded breast cancer tissues (left) and testis tissues (right) using SMN1 mouse mAb with DAB staining.



Immunohistochemical analysis of paraffin-embedded stomach cancer tissues (left) and brain tumor (right) using SMN1 mouse mAb with DAB staining.



Immunofluorescence analysis of HepG2 cells using SMN1 mouse mAb (green). Blue: DRAQ5 fluorescent DNA dye. Red: Actin filaments have been labeled with Alexa Fluor-555 phalloidin.