

Product datasheet for **AM06632SU-N**

SMN1 Mouse Monoclonal Antibody [Clone ID: 2F1]

Product data:

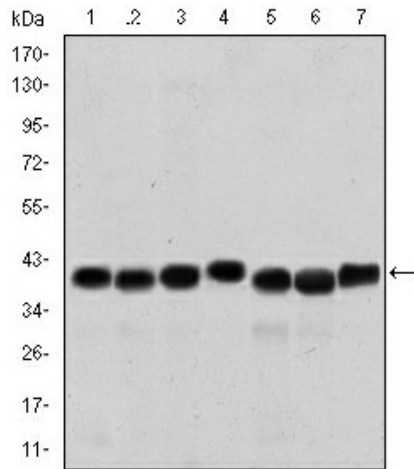
Product Type:	Primary Antibodies
Clone Name:	2F1
Applications:	ELISA, FC, IHC, WB
Recommended Dilution:	Western Blot: 1/500-1/2000. Immunohistochemistry on paraffin sections 1/200-1/1000. Flow Cytometry: 1/200-1/400. ELISA: 1/10000.
Reactivity:	Human, Monkey
Host:	Mouse
Isotype:	IgG1
Clonality:	Monoclonal
Immunogen:	Purified recombinant fragment of human SMN1 expressed in E. Coli.
Specificity:	This antibody reacts to SMN1.
Formulation:	State: Ascites State: Ascitic fluid containing 0.03% sodium azide.
Conjugation:	Unconjugated
Storage:	Store the antibody undiluted at 2-8°C for one month or (in aliquots) at -20°C for longer. Avoid repeated freezing and thawing.
Stability:	Shelf life: one year from despatch.
Predicted Protein Size:	39 kDa
Gene Name:	survival of motor neuron 1, telomeric
Database Link:	Entrez Gene 6606 Human Q16637
Background:	This gene is part of a 500 kb inverted duplication on chromosome 5q13. This duplicated region contains at least four genes and repetitive elements which make it prone to rearrangements and deletions. The repetitiveness and complexity of the sequence have also caused difficulty in determining the organization of this genomic region. The telomeric and centromeric copies of this gene are nearly identical and encode the same protein.



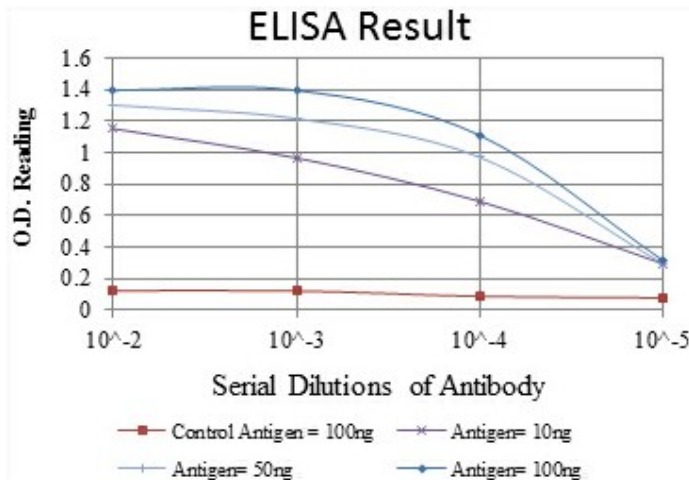
[View online »](#)

Synonyms: SMN, SMNT, SMNC, Survival motor neuron protein, Component of gems 1, Gemin1, Gemin-1

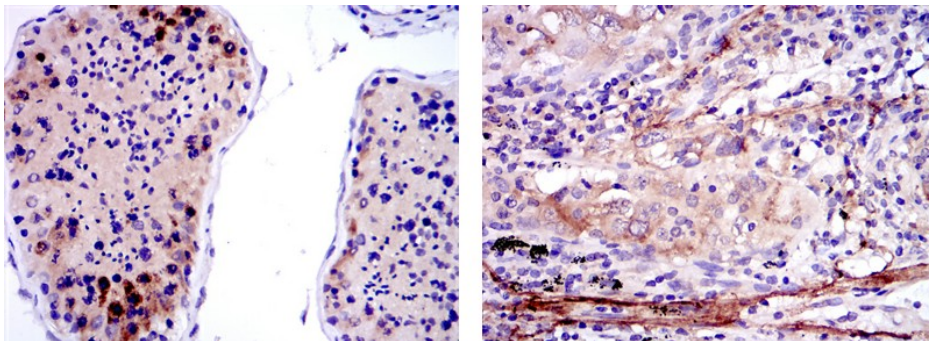
Product images:



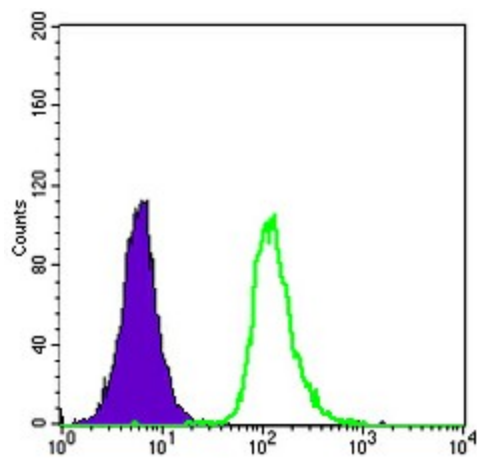
Western blot analysis using SMN1 mouse mAb against HepG2 (1), Hela (2), K562 (3), Jurkat (4), SKBR-3 (5), A431 (6) and Cos7 (7) cell lysate.



Red: Control Antigen (100ng) Purple: Antigen (10ng) Green: Antigen (50ng) Blue: Antigen (100ng)



Immunohistochemical analysis of paraffin-embedded testis tissues (left) and lung cancer tissues (right) using SMN1 mouse mAb with DAB staining.



Flow cytometric analysis of HepG2 cells using SMN1 mouse mAb (green) and negative control (purple).