

## Product datasheet for **AM06631SU-N**

### ABCG2 Mouse Monoclonal Antibody [Clone ID: 1H2]

#### Product data:

Product Type:	Primary Antibodies
Clone Name:	1H2
Applications:	ELISA, IF, WB
Recommended Dilution:	<b>ELISA:</b> 1/10000. <b>Western Blot:</b> 1/500-1/2000. <b>Immunofluorescence:</b> 1/200-1/1000.
Reactivity:	Human, Monkey, Mouse
Host:	Mouse
Isotype:	IgG1
Clonality:	Monoclonal
Immunogen:	Purified recombinant fragment of Human ABCG2 expressed in E. Coli.
Specificity:	This antibody recognizes ABCG2.
Formulation:	State: Ascites State: Ascitic fluid containing 0.03% Sodium Azide.
Conjugation:	Unconjugated
Storage:	Store the antibody undiluted at 2-8°C for one month or (in aliquots) at -20°C for longer. Avoid repeated freezing and thawing.
Stability:	Shelf life: one year from despatch.
Predicted Protein Size:	72 kDa
Gene Name:	ATP binding cassette subfamily G member 2 (Junior blood group)
Database Link:	<a href="#">Entrez Gene 9429 Human</a> <a href="#">Q9UNQ0</a>



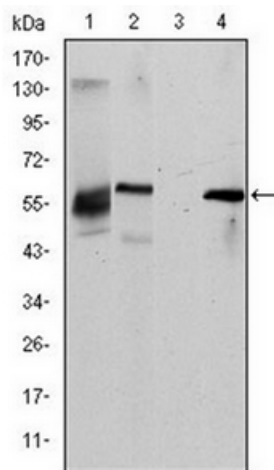
[View online »](#)

**Background:**

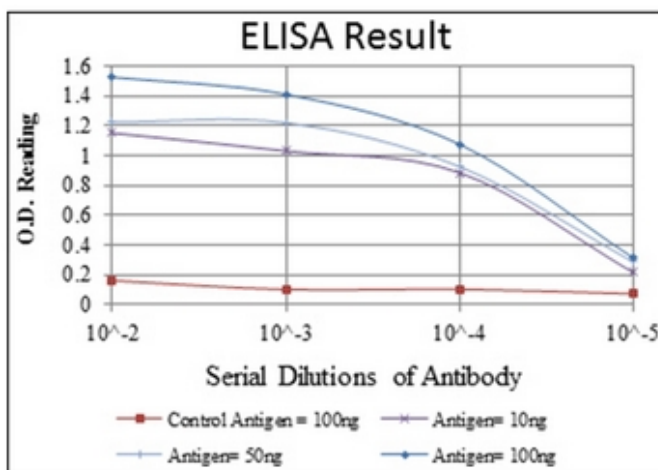
The membrane-associated protein encoded by this gene is included in the superfamily of ATP-binding cassette (ABC) transporters. ABC proteins transport various molecules across extra- and intra-cellular membranes. ABC genes are divided into seven distinct subfamilies (ABC1, MDR/TAP, MRP, ALD, OABP, GCN20, White). This protein is a member of the White subfamily. Alternatively referred to as a breast cancer resistance protein, this protein functions as a xenobiotic transporter which may play a major role in multi-drug resistance. It likely serves as a cellular defense mechanism in response to mitoxantrone and anthracycline exposure. Significant expression of this protein has been observed in the placenta, which may suggest a potential role for this molecule in placenta tissue. Tissue specificity: Highly expressed in placenta. Low expression in small intestine, liver and colon.

**Synonyms:**

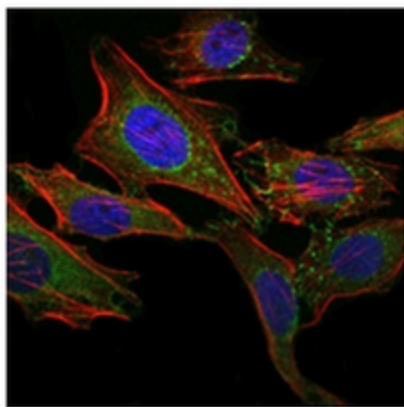
Breast cancer resistance protein 1, ABCP, MXR

**Product images:**


Western blot analysis using ABCG2 mouse mAb against HepG2 (1), Cos7 (2), Jurkat (3) and NIH/3T3 (4) cell lysate.



Red: Control Antigen (100ng) Purple: Antigen (10ng) Green: Antigen (50ng) Blue: Antigen (100ng)



Immunofluorescence analysis of HeLa cells using ABCG2 mouse mAb (green). Blue: DRAQ5 fluorescent DNA dye. Red: Actin filaments have been labeled with Alexa Fluor-555 phalloidin.