

Product datasheet for **AM06627SU-N**

Apolipoprotein E (APOE) Mouse Monoclonal Antibody [Clone ID: 1H4]

Product data:

Product Type:	Primary Antibodies
Clone Name:	1H4
Applications:	ELISA, FC, IHC, WB
Recommended Dilution:	Western Blot: 1/500 - 1/2000. Immunohistochemistry on paraffin sections: 1/200 - 1/1000. Flow cytometry: 1/200 - 1/400. ELISA: 1/10000.
Reactivity:	Human
Host:	Mouse
Isotype:	IgG1
Clonality:	Monoclonal
Immunogen:	Purified recombinant fragment of human ApoE expressed in E. Coli.
Specificity:	This antibody reacts to ApoE.
Formulation:	State: Ascites State: Ascitic fluid containing 0.03% sodium azide.
Conjugation:	Unconjugated
Storage:	Store the antibody undiluted at 2-8°C for one month or (in aliquots) at -20°C for longer. Avoid repeated freezing and thawing.
Stability:	Shelf life: one year from despatch.
Predicted Protein Size:	36 kDa
Gene Name:	apolipoprotein E
Database Link:	Entrez Gene 348 Human P02649



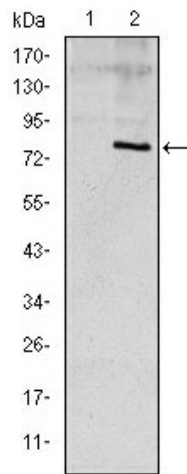
[View online »](#)

Background:

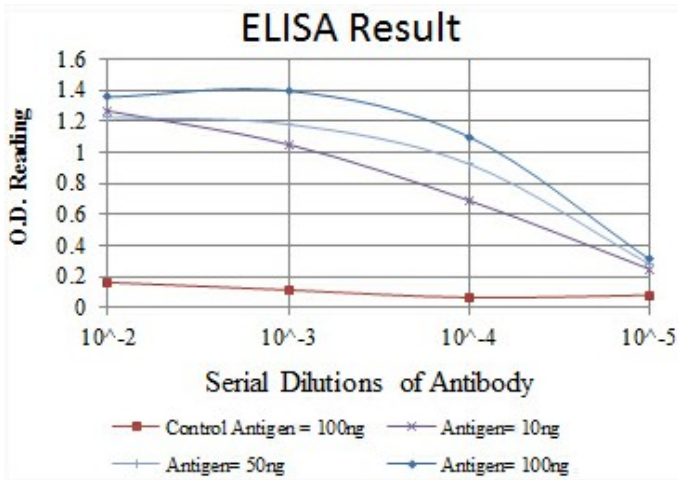
Chylomicron remnants and very low density lipoprotein (VLDL) remnants are rapidly removed from the circulation by receptor-mediated endocytosis in the liver. Apolipoprotein E, a main apoprotein of the chylomicron, binds to a specific receptor on liver cells and peripheral cells. ApoE is essential for the normal catabolism of triglyceride-rich lipoprotein constituents. The APOE gene is mapped to chromosome 19 in a cluster with APOC1 and APOC2. Defects in apolipoprotein E result in familial dysbetalipoproteinemia, or type III hyperlipoproteinemia (HLP III), in which increased plasma cholesterol and triglycerides are the consequence of impaired clearance of chylomicron and VLDL remnants. Tissue specificity: Occurs in all lipoprotein fractions in plasma. It constitutes 10-20% of very low density lipoproteins (VLDL) and 1-2% of high density lipoproteins (HDL). APOE is produced in most organs. Significant quantities are produced in liver, brain, spleen, lung, adrenal, ovary, kidney and muscle.

Synonyms:

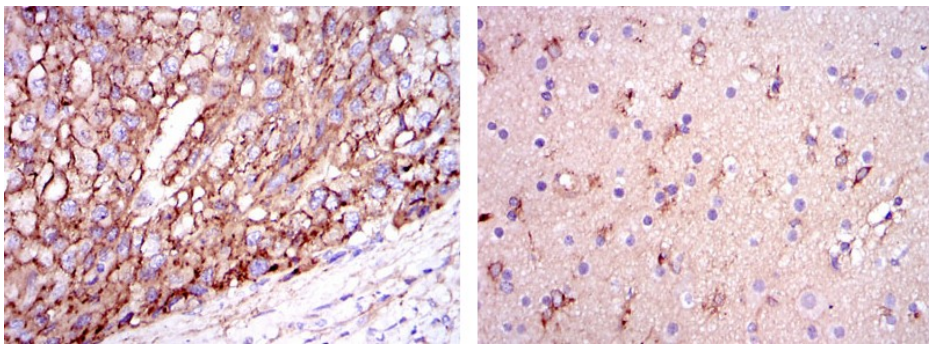
ApoE, Apo-E

Product images:

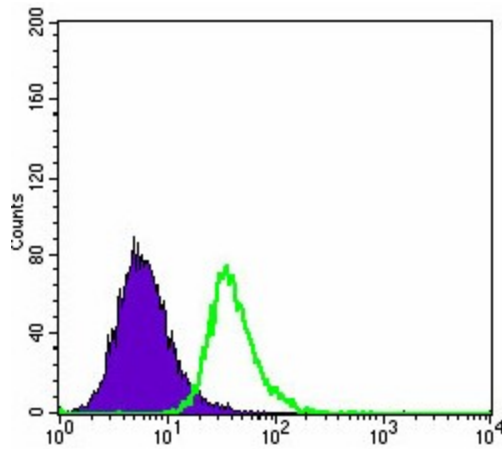
Western blot analysis using ApoE mAb against HEK293 (1) and ApoE (AA: 20-267)-hlgGfc transfected HEK293 (2) cell lysate.



Red: Control Antigen (100ng) Purple: Antigen (10ng) Green: Antigen (50ng) Blue: Antigen (100ng)



Immunohistochemical analysis of paraffin-embedded liver cancer tissues (left) and brain tissues (right) using ApoE mouse mAb with DAB staining.



Flow cytometric analysis of HepG2 cells using ApoE mouse mAb (green) and negative control (purple).